

Talga Presentation at Benchmark Battery Megafactories Europe 2022 - Berlin

Battery and advanced materials company Talga Group Ltd ("**Talga**" or "**the Company**")(**TLG:ASX**) is pleased to provide a copy of the presentation to be delivered by the Company's Group COO and European CEO, Martin Phillips, during the Benchmark Battery Megafactories Europe 2022 in Berlin today, Tuesday 22 March 2022.

The presentation is available on the Company's website via the link below:

<https://www.talgagroup.com/irm/content/presentations.aspx?RID=301>

Authorised for release by:

Dean Scarparolo
Company Secretary
Talga Group Ltd
T: +61 (0) 8 9481 6667

For further information please contact:

Mark Thompson
Managing Director
Talga Group Ltd
+61 (0) 8 9481 6667

Nikki Löf
Group Communications Manager
Talga Group Ltd
+61 (0) 8 9481 6667

About Talga

Talga Group Ltd (ASX:TLG) is building a European battery anode and graphene additives supply chain, to offer advanced materials critical to its customers' innovation and the shift towards a more sustainable world. Vertical integration, including ownership of several high-grade Swedish graphite projects, provides security of supply and creates long-lasting value for stakeholders. Company website: www.talgagroup.com



BATTERY MEGAFAC+ORIES

EUROPE 2022

TUE 22 & WED 23 MARCH 2022

THE WESTIN GRAND, BERLIN, GERMANY

Building a vertically integrated European battery anode supply chain

Martin Phillips

Group COO and European CEO

Talga Group Ltd (ASX:TLG)

talga

Cautionary Statement and Disclaimer

Talga Group Ltd ACN 138 405 419 (the Company) is the issuer of this presentation.

Niska Scoping Study

The Niska Scoping Study is a preliminary technical and economic study of the potential viability of developing the Nunasvaara North, Niska South and Niska North graphite deposits by constructing an integrated mining and refining operation to produce Talga's anode products for Li-ion batteries. It is based on low level technical and economic assessments that are not sufficient to support the estimation of ore reserves or to provide assurance of an economic development case. Further evaluation work and appropriate studies are required before the Company will be in a position to estimate any ore reserves or to provide any assurance of an economic development case or certainty that the conclusions of the Scoping Study will be realised. The Scoping Study is based on the material assumptions outlined in the announcement of 7 December 2020. These include assumptions about the availability of funding. While Talga considers all of the material assumptions to be based on reasonable grounds, there is no certainty that they will prove to be correct or that the range of outcomes indicated by the Scoping Study will be achieved. To achieve the range of outcomes indicated in the Scoping Study, funding in the order of US\$1,000 million plus contingencies may be required. Investors should note that there is no certainty that the Company will be able to raise that amount of funding when needed. It is also possible that such funding may only be available on terms that may be dilutive to or otherwise affect the value of the Company's existing shares. It is also possible that the Company could pursue other 'value realisation' strategies such as a sale, partial sale or joint venture of the project. If it does, this could materially reduce the Company's proportionate ownership of the deposits covered by the Niska Scoping Study. Given the uncertainties involved, investors should not make any investment decisions based solely on the results of the Scoping Study.

The Company first reported the Niska Scoping Study production targets and forecast financial information referred to in this presentation in accordance with Listing Rules 5.16 and 5.17 in its announcement titled "Niska Scoping Study Outlines Pathway to Globally Significant Battery Anode Production" dated 7 December 2020. The Company confirms that all material assumptions underpinning those production targets and forecast financial information derived from those production targets continue to apply and have not materially changed.

Forward-looking statements

This presentation contains forward-looking statements. Those forward-looking statements reflect views held only as at the date of this presentation. Any such statement is subject to inherent risks and uncertainties. Actual events or results may differ materially from the events or results expressed or implied in any forward-looking statement, and such deviations are both normal and to be expected. Recipients must make their own assessment about the likelihood of a matter, about which a forward-looking statement is made, occurring. The Company makes no representation about the likelihood of a matter, about which a forward-looking statement is made, occurring. The Company and its directors, employees, agents, advisers and consultants: give no representation or warranty to a recipient of this presentation as to the accuracy or completeness of the statements contained in this presentation or in relation to any other matter; and to the fullest extent permitted by law, disclaim responsibility for and have no liability to a recipient of this presentation for any error or omission in or for any statement in this presentation.

Reliance on presentation

A recipient of this presentation must make their own assessment of the matters contained herein and rely on their own investigations and judgment in making an investment in the Company. This presentation does not purport to contain all of the information required to make an informed decision whether to invest in the Company. Specifically, this presentation does not purport to contain all the information that investors and their professional advisers would reasonably require to make an informed assessment of the Company's assets and liabilities, financial position and performance, profits, losses and prospects.

Not a recommendation or financial advice

The information in this presentation is not a recommendation to subscribe for securities in the Company and does not constitute financial advice. Any person who intends to subscribe for securities must conduct their own investigations, assessment and analysis of the Company and its operations and prospects and must base their investment decision solely on those investigations and that assessment and analysis. Prospective investors should consult their own legal, accounting and financial advisers about an investment in the Company.

Photographs and images

Photographs, maps, charts, diagrams and schematic drawings in this presentation are owned by and have been prepared or commissioned by the Company, unless otherwise stated. Maps and diagrams used are illustrative only and may not be drawn to scale. Unless stated otherwise, all data contained in charts, graphs and tables is based on information available at the date of this presentation.

Battery anode & advanced materials

Talga is building a fully integrated ultra-low CO₂ battery anode supply chain

Large, wholly owned natural graphite mineral resources in Sweden

Operating our own process plants using in-house developed IP for purification, spheronising and coating of natural graphite

Marketing and selling natural anode and synthetic blends to customers for their cell qualifications

Continuing to develop new products and advanced battery materials including silicon anode



Purification Plant

- › Demonstrated capability to refine natural graphite to battery grade levels via chemical and thermal purification processes
- › Currently operating a European-based alkali roasting and acid washing plant producing on a continuous basis at $\geq 99.95\%$ specification (in accordance with DFS)
- › Talga and European partners continue to develop and innovate supply chains for purification to enhance sustainability credentials even further





Electric Vehicle Anode Plant

- › First coated anode production plant in Europe (Swerim site in Luleå, Sweden)
- › Plant will produce active anode material for EV batteries at large-scale quantities aligned with customer requirements
- › Milestone installation of first anode coating equipment achieved and full commissioning on track for end Q1 2022
- › Critical step in progressing automotive OEM procurement processes



Following the EVA anode plant, Talga will ramp up to initial 19,500tpa (~16GWh) of coated anode production from 2024

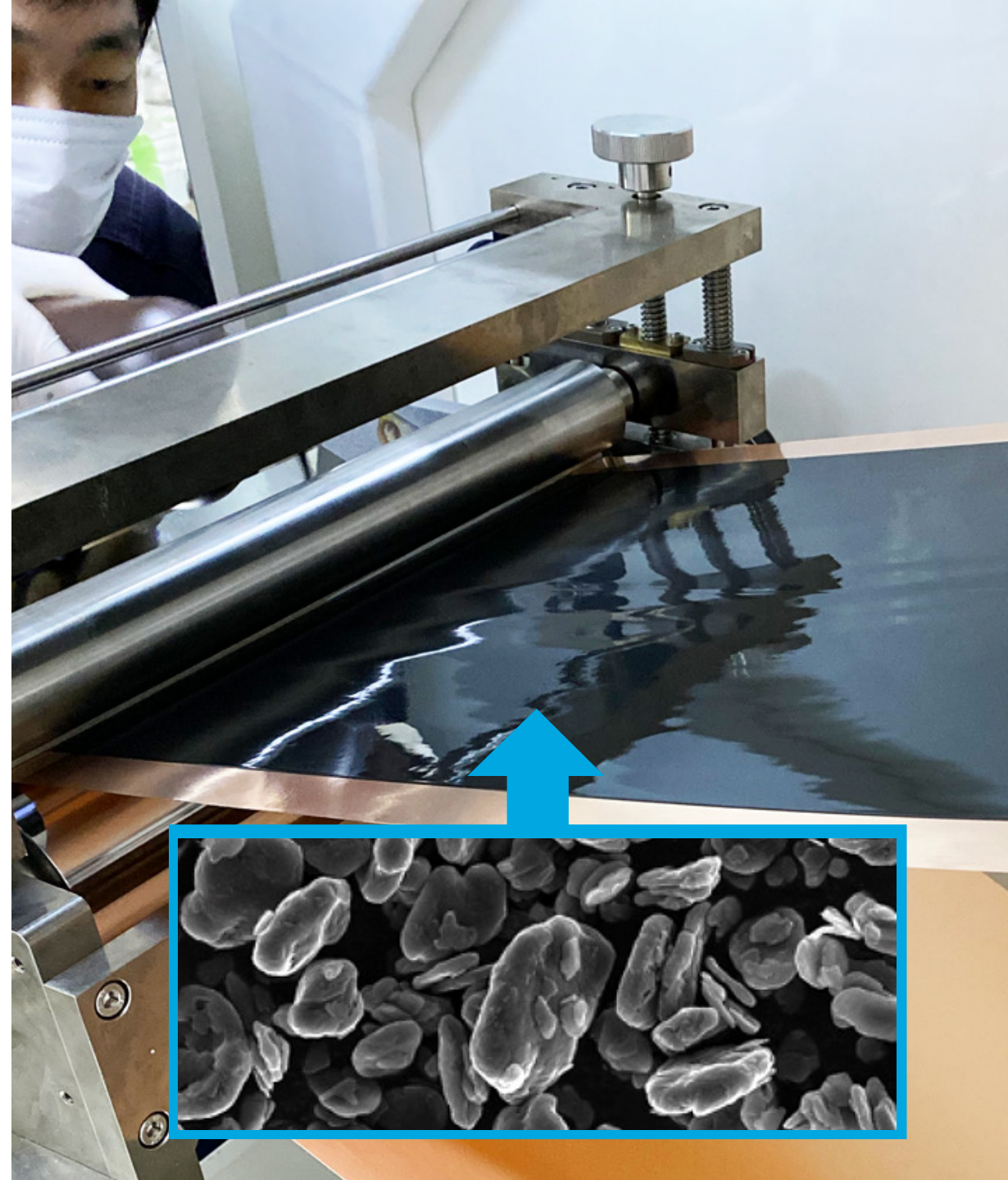


Operation uses clean renewable energy and responsibly extracted natural graphite from Talga's Swedish Vittangi project close to European Battery Manufacturers

Marketing and Sales of Talnode®-C

Strong demand for Talga's flagship Li-ion battery anode product Talnode®-C

- ✓ Highly engineered graphite anode material with ultra-low CO₂ emission profile for both EVs and consumer applications
- ✓ Excellent charging performance at high load and low temperature
- ✓ High rate and excellent capacity retention (>90%) during fast charging
- ✓ Effective for applications that require a higher rate (>10C) such as for PHEVs and HEV





Natural/Synthetic blends

- › Depending on customer specifications, EV battery anodes can be pure natural graphite or a blend with synthetic
- › Talnode®-C has been designed to replace synthetic graphite in anode and enhance the performance of the battery pack
- › EV customers are increasingly using natural to align with their commercial and carbon footprint targets
- › In Q4 2021, Talga signed MOU with Long Time Technology Group, a producer of synthetic battery anodes for tier-1 devices and EVs, to test blended anode

Localisation of anode for cell makers

Planned European battery capacity totalling >850GWh by 2031

VOLKSWAGEN

northvolt®

Panasonic

ACC
AUTOMOTIVE CELLS Co

talga

MORROW

FREYR
Renewable energy storage

amte

FAAM

CATL

inoBat+

VERIKOR

SAMSUNG

Envision
AESC

microvast

VARTA®

SK innovation

BRITISHVOLT

PARASIS

TESLA

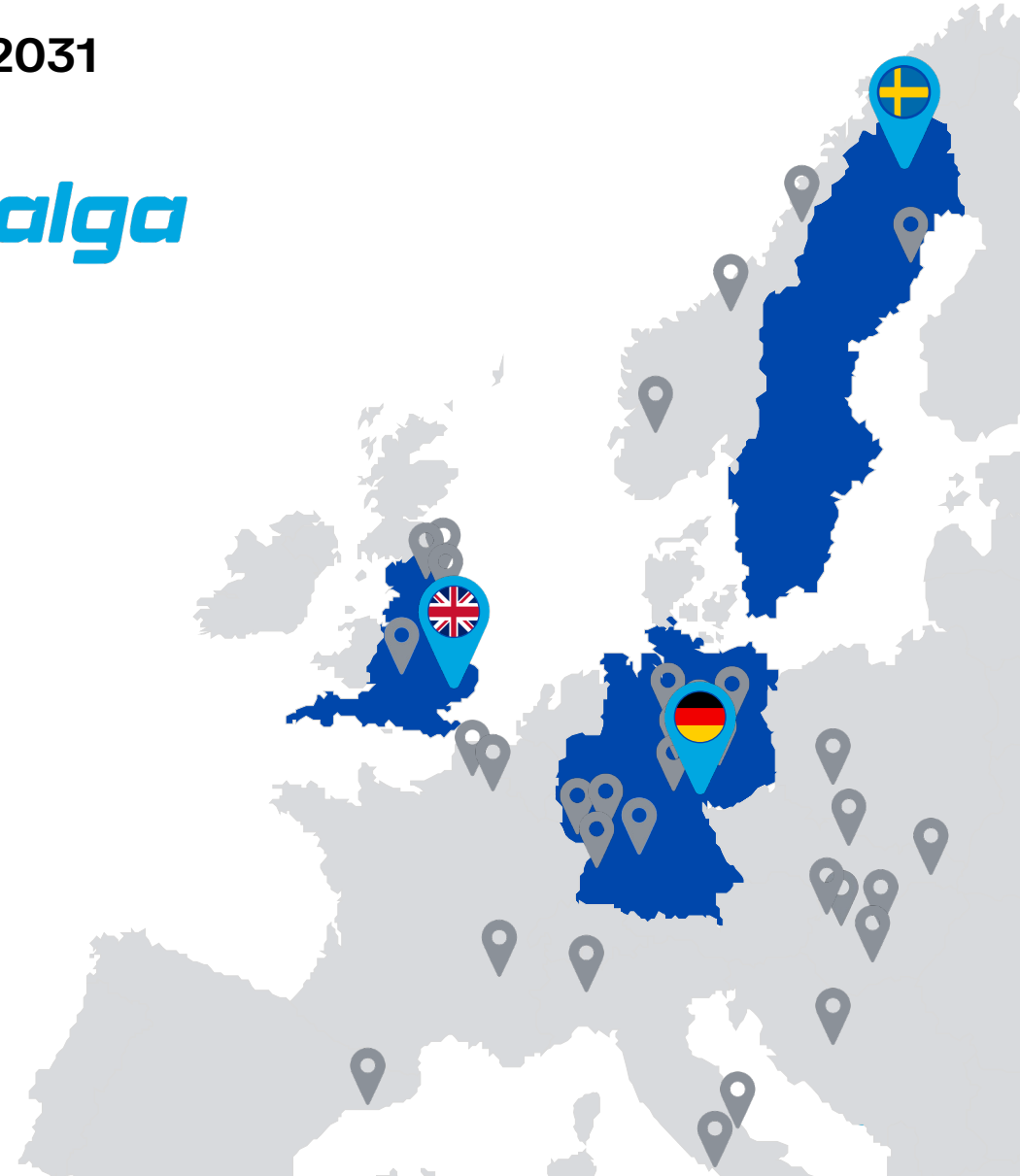
MES
MAGNA ENERGY STORAGE

Leclanché
Energy Storage Solutions

LG Chem

SVOLT
蜂巢能源

ITALVOLT®



Exploring for sustainable growth

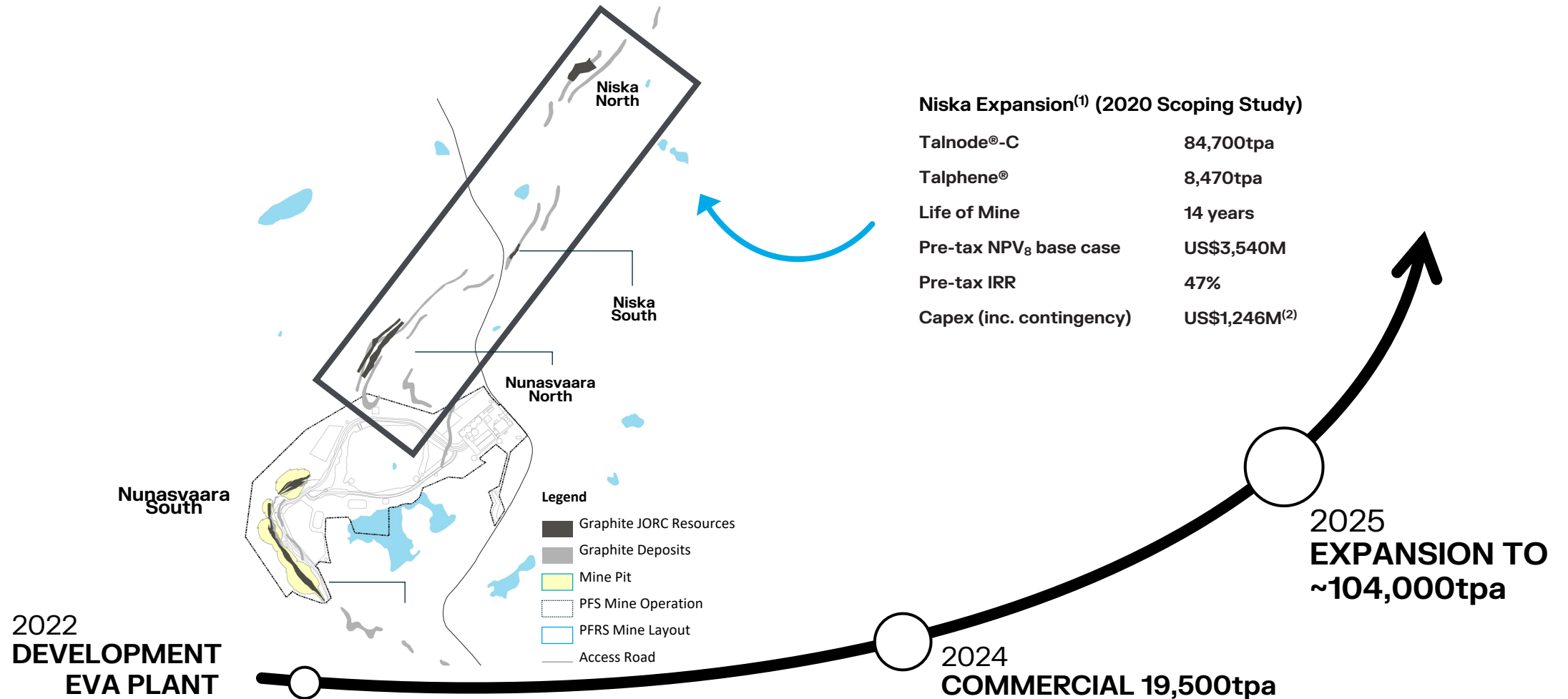
Strategic exploration activities to underpin potential future expansions of anode and advanced materials business

- ✓ 2021 phase of Niska Trial Mine successfully completed providing feed material for EVA
- ✓ 2021 Vittangi drilling returns world-class grades (eg 90m @ 30.8% Cg - NUS21008) paving way to upgrade Europe's largest natural graphite resource
- ✓ Resource upgrade planned for Q2 2022



Path to >100,000tpa anode production

Niska adds to Vittangi to make Talga one of the largest anode producers outside China



SEE: ASX:TLG ASX:TLG 23 MAY 2019; 24 JUNE and 7 DEC 2020; 1 JULY 2021. (1) REFER TO THE CAUTIONARY STATEMENT IN RESPECT OF THE NISKA SCOPING STUDY ON PAGE 2. (2) INCLUDES US\$171M MINE AND CONCENTRATOR, PURIFICATION PLANT US\$197MM, ANODE PLANT US\$304MM, INDIRECT REFINERY US\$168MM, INFRASTRUCTURE US\$202MM and CONTINGENCY US\$206MM

Partnerships for a greener future

Working with respected battery customers and technology and development partners



Global Operations

Perth, Australia

Group head office

Luleå & Kiruna, Sweden

Anode production & integrated graphite mine

Cambridge, UK

Battery anode product & technology center

Rudolstadt, Germany

**Metallurgical process pilot facility &
EU customer network**

Osaka, Japan

Commercial office and product development



Corporate Overview

ASX:TLG (12 MONTHS)



STOCKMARKET CODES/TICKERS

Primary listing in Australia on the ASX (TLG)
with OTC trading in Germany (TGX) and US (TLGRF)

CAPITAL STRUCTURE

ASX Listing Code:	TLG
Market Capitalisation:	\$418.9M
Listed Shares:	304.7M
Unlisted Options:	13.4M (1)
Cash as at 31 December 2021:	\$31.5M

MAJOR SHAREHOLDERS

Mark Thompson – M. Director	4.7%
Kinetic Investment Partners	4.4%
National Financial Services LLC	2.1%
UBS AG	2.0%
Yandal Investment Pty Ltd	1.6%

TOP 20 SHAREHOLDERS	29.1%
Total number of shareholders	11,719



TALGA GROUP LTD

ASX:TLG

Group Head Office: Suite 3.03, Level 3,
46 Colin Street
West Perth WA 6005, Australia

Phone Number: +61 8 9481 6667

Email Address: info@talgagroup.com

Website: www.talgagroup.com

JORC Graphite Reserve and Resources

Ore Reserve ^{3,6}	Tonnes	Graphite (% Cg)
Nunasvaara (JORC 2012)	2,260,140	24.1
Probable	2,260,140	24.1

Mineral Resources ^{1, 2, 4, 5, 7, 8, 9}	Tonnes	Graphite (% Cg)
Vittangi Nunasvaara (JORC 2012)	14,900,000	23.4
Indicated	10,400,000	25.6
Inferred	4,500,000	18.3
Vittangi Niska (JORC 2012)	4,600,000	25.8
Indicated	4,600,000	25.8
Jalkunen (JORC 2012)	31,500,000	14.9
Inferred	31,500,000	14.9
Raitajärvi (JORC 2004)	4,300,000	7.1
Indicated	3,400,000	7.3
Inferred	900,000	6.4
Total Mineral Resources	55,300,000	17.5

NOTE:

1. MINERAL RESOURCES ARE INCLUSIVE OF ORE RESERVES.
2. MINERAL RESOURCES ARE REPORTED AT VARIOUS CUT OFF GRADES: NUNASVAARA AND NISKA 10%Cg, JALKUNEN 5%Cg AND RAITAJÄRVI 5%Cg.
3. ORE RESERVE IS REPORTED AT A CUT OFF GRADE OF 12%Cg.
4. ERRORS MAY EXIST DUE TO ROUNDING.

Competent Person Statements

The Niska Mineral Resource estimate was first reported in the Company's announcement dated 15 October 2019 titled 'Talga boosts Swedish graphite project with maiden Niska resource'. The Company confirms that it is not aware of any new information or data that materially affects the information included in the previous market announcement and that all material assumptions and technical parameters underpinning the Resource estimate in the previous market announcement continue to apply and have not materially changed.

The Nunasvaara Mineral Resource estimate was first reported in the Company's announcement dated 17 September 2020 titled 'Talga Boosts European Natural Graphite Resources'. The Company confirms that it is not aware of any new information or data that materially affects the information included in the previous market announcement and that all material assumptions and technical parameters underpinning the Resource estimate in the previous market announcement continue to apply and have not materially changed.

The Nunasvaara Ore Reserve statement was reported in the Company's announcement dated 1 July 2021 titled 'Robust Vittangi Anode Project DFS'. The Company confirms that it is not aware of any new information or data that materially affects the information included in the previous market announcement and that all material assumptions and technical parameters underpinning the Reserve estimate in the previous market announcement continue to apply and have not materially changed.

The Jalkunen Mineral Resource estimate was first reported in the Company's announcement dated 27 August 2015 titled 'Talga Trebles Total Graphite Resource to Global Scale'. The Company confirms that it is not aware of any new information or data that materially affects the information included in the previous market announcement and that all material assumptions and technical parameters underpinning the Resource estimate in the previous market announcement continue to apply and have not materially changed.

The Raitajärvi Mineral Resource estimate was first reported in the Company's announcement dated 26 August 2013 titled '500% Increase to 307,300 Tonnes Contained Graphite in New Resource Upgrade for Talga's Swedish Project'. The Company confirms that it is not aware of any new information or data that materially affects the information included in the previous market announcement and that all material assumptions and technical parameters underpinning the Resource estimate in the previous market announcement continue to apply and have not materially changed.

The Company first reported the production targets and forecast financial information referred to in this presentation in accordance with Listing Rules 5.16 and 5.17 in its announcement titled 'Robust Vittangi Anode Project DFS' dated 1 July 2021. The Company confirms that all material assumptions underpinning those production targets and forecast financial information derived from those production targets continue to apply and have not materially changed.

The Information in this announcement that relates to prior exploration results for the Vittangi Graphite Project is extracted from ASX announcements available to view on the Company's website at www.talgagroup.com. The Company confirms that it is not aware of any new information or data that materially affects the exploration results included in the relevant original market announcements. The Company confirms that the form and context in which the Competent Person and Qualified Person's findings are presented have not been materially modified from the relevant original market announcements.