

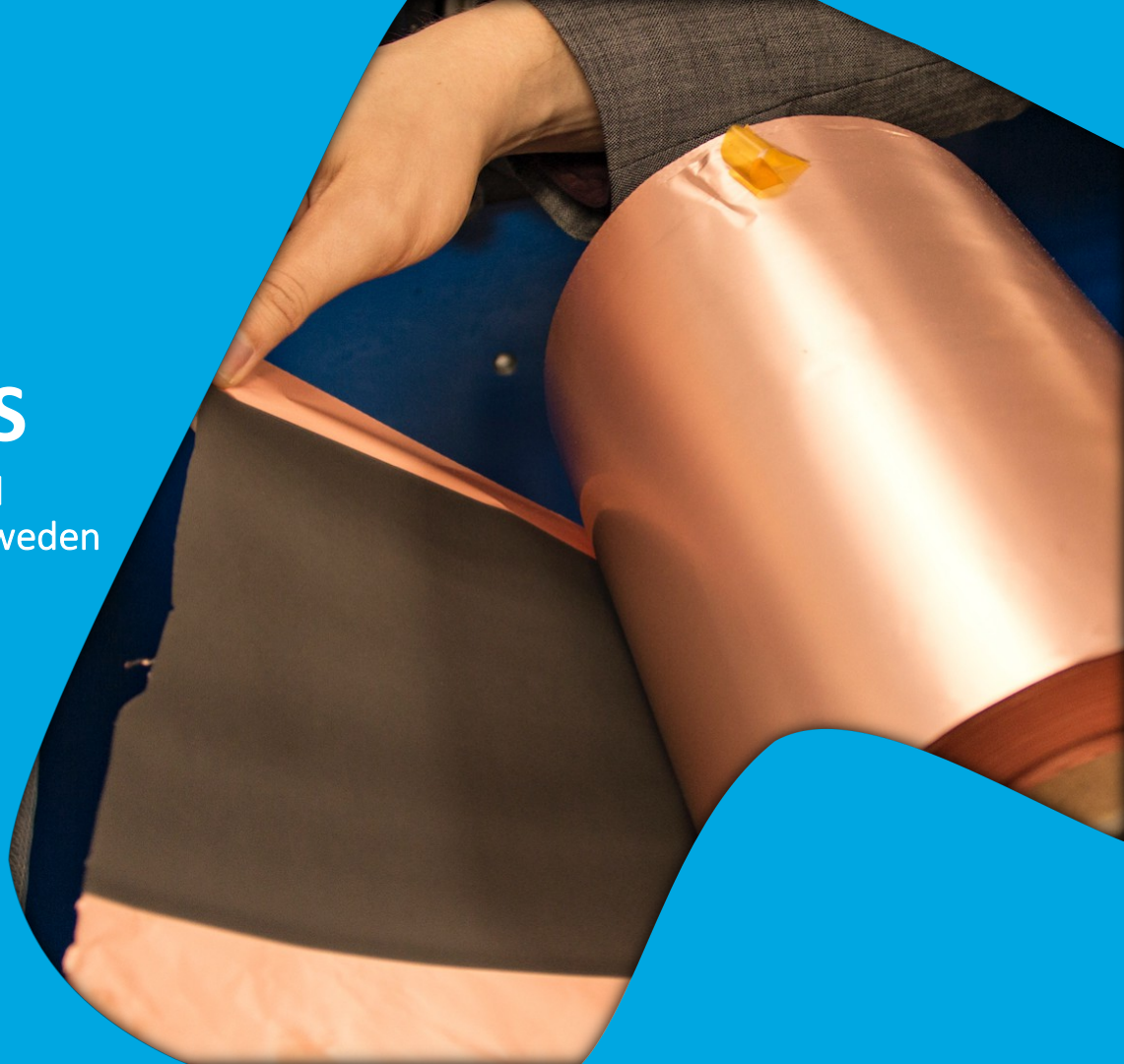


# TALGA RESOURCES

Developing the Vittangi Graphite and  
Battery Metal Projects in northern Sweden

Martin Phillips,  
Chief Operating Officer

Association of Mining Analysts  
Battery Metals in Europe  
London, 14 March 2019



# FORWARD LOOKING STATEMENTS & DISCLAIMER

This presentation has been prepared by Talga Resources Ltd (ACN 138 405 419) ("Issuer") for the sole purpose of providing an overview of its current prospects and proposed exploration and development strategy to recipients ("Recipient"). This presentation and its contents are provided to the Recipient in confidence and may not be reproduced or disclosed in whole or in part to any other person, without the written consent of the Issuer.

The presentation is based on information available to the Issuer as at the date of the presentation. The information contained in this presentation has not been verified by the Issuer nor has the Issuer conducted any due diligence in relation to that information. The presentation contains selected information and does not purport to be all inclusive or to contain all information that may be relevant to the Recipient. The Recipient acknowledges that circumstances may change and this presentation may become outdated as a result. The Issuer accepts no obligation to update or correct this presentation.

This document includes forward-looking statements. When used in this document, the words such as "could," "plan," "estimate," "expect," "intend," "may," "potential," "should," and similar expressions are forward-looking statements. Although the Issuer believes that the expectations reflected in these forward-looking statements are reasonable, such statements involve risks and uncertainties, and no assurance can be given that actual results will be consistent with these forward-looking statements.

No representation or warranty, express or implied, is made as to the fairness, accuracy, completeness or correctness of the information, opinions and conclusions contained in this presentation. To the maximum extent permitted by law, none of the Issuer, its directors, employees or agents, advisers, nor any other person accepts any liability for any loss arising from the use of this presentation or its contents or otherwise arising in connection with it, including, without limitation, any liability arising from fault or negligence on the part of the Issuer or its directors, employees or agents. Nothing in this Presentation is a promise or representation as to the future. Statements or assumptions in this presentation as to future matters may prove to be incorrect and differences may be material. The Issuer does not make any representation or warranty as to the accuracy of such statements or assumptions.

The information in this presentation does not take into account the investment objectives, financial situation and particular needs of any Recipient. The Recipient should not make an investment decision on the basis of this presentation alone and the Recipient should conduct its own independent investigation and assessment of the content of this presentation. Nothing in this presentation constitute financial product, investment, legal, tax or other advice. Nothing in this presentation should be construed as a solicitation to buy or sell any security or to engage or refrain from engaging in any dealing in any security. Photographs, maps, charts, diagrams and schematic drawings appearing in this presentation are owned by and have been prepared by or commissioned by the Issuer, unless otherwise stated. Maps and diagrams used in the presentation are illustrative only and may not be drawn to scale. Unless otherwise stated, all data contained in charts, graphs and tables is based on information available at the date of this presentation. By accepting this presentation the Recipient agrees to be bound by the foregoing statements.

# TALGA RESOURCES LTD

Emerging global advanced materials technology company with unique vertically integrated capability

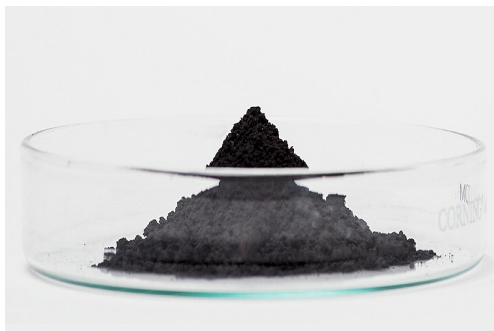
- ▶ Focussing on graphite and graphene products for clean technology applications in the **global battery, coatings, construction and polymer composites markets**. Australian domiciled (ASX:TLG) with operations and >35 staff across UK, Germany and Sweden



Mineral Resources

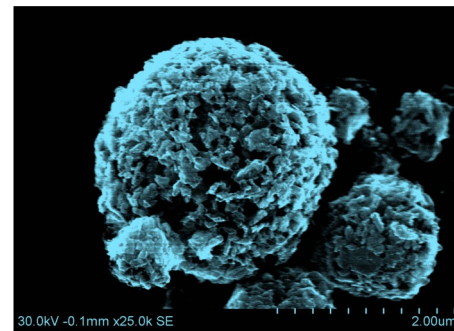
*World's highest grade JORC/NI43-101 graphite mineral resource and largest in Europe.*

*Using low CO<sub>2</sub> power in first class investment jurisdiction of Sweden*



Processing Technologies

*Developing micro-to-nano graphene and graphite products via proprietary processing tech at its plant in Germany with scale and cost advantages over industry standards*



Product Technologies and IP

*Value added Li-ion battery and graphene products by own R&D and customer interface team in UK, with high performance for lower environmental impact and growing list of commercial partners*

## ▶ EUROPEAN OPERATIONS

Headquartered in Australia (listed on ASX) with major operations and business units in Europe

- ▶ **Talga Graphene AB/Talga Battery Metals AB**  
100%-owned Graphite, Cobalt and Copper/Gold deposits in north Sweden

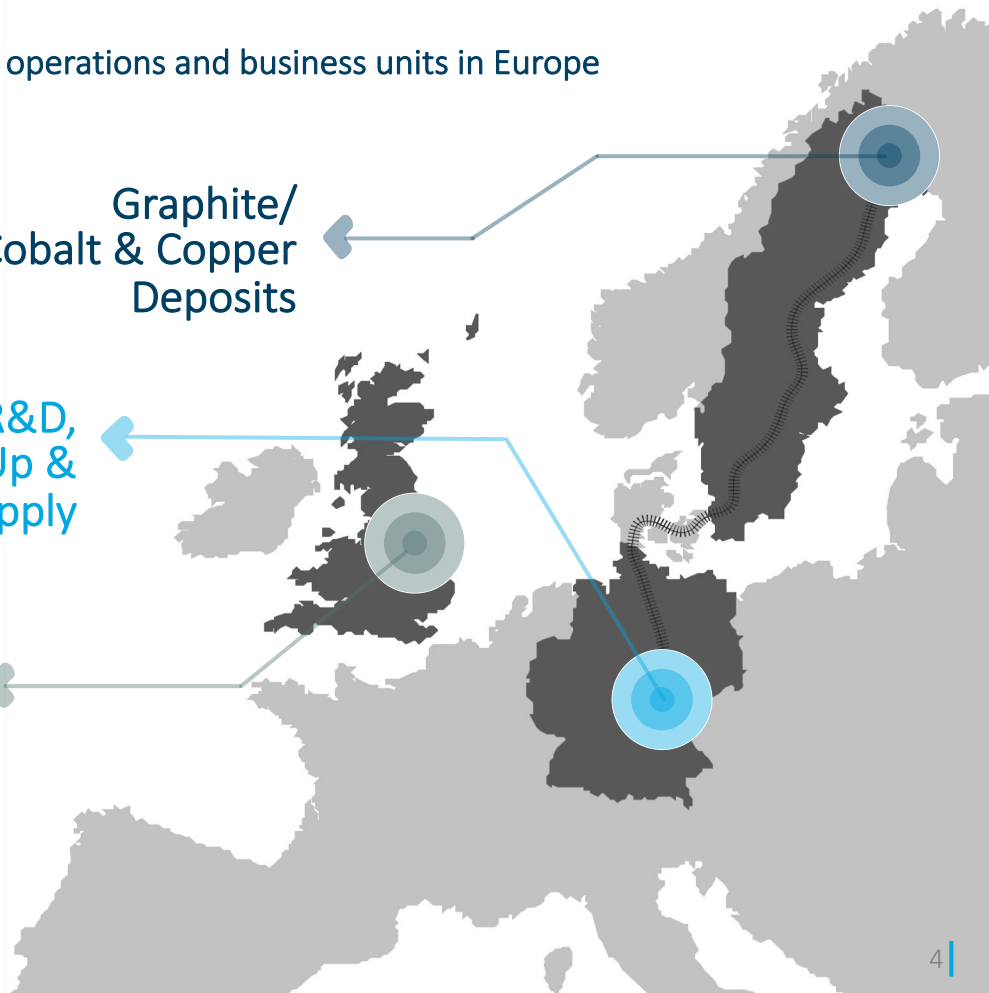
- ▶ **Talga Advanced Materials GmbH**  
Germany 100%-owned process test facility in Rudolstadt, Germany

- ▶ **Talga Technologies Limited**  
In-house product R&D team located in Cambridge, UK

Graphite/  
Cobalt & Copper  
Deposits

Process R&D,  
Scale Up &  
Sample Supply

Product  
Development  
& Marketing



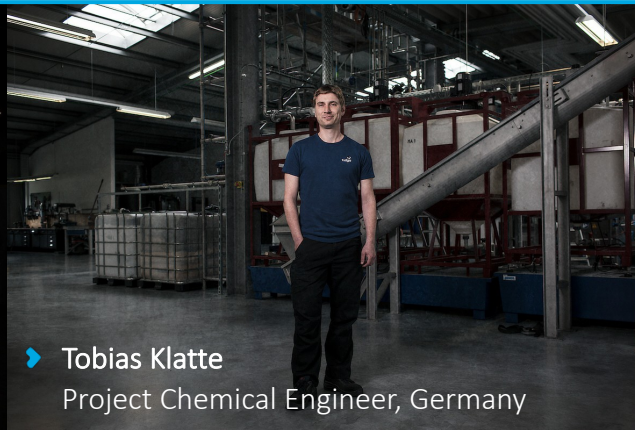


## ▶ ORE-TO-PRODUCT EXPERTISE

- ▶ **Earth scientists, project managers and stakeholder engagement specialists** undertaking ongoing exploration and progressing permitting and feasibility related surveys and studies towards concurrent mining, environmental and exploitation licence applications at Talga's Vittangi Graphene-Graphite Project
- ▶ **Highly skilled engineering, processing and laboratory staff with significant industrial expertise** operating pilot scale production technologies and processes to optimise proprietary engineering solutions
- ▶ **Technical sales experts and material scientists** working closely with commercial partners to enable smarter, stronger and greener products & solutions for the global battery, coatings, composite and construction industry



▶ **Tom Kearney**  
Project Geologist, Sweden



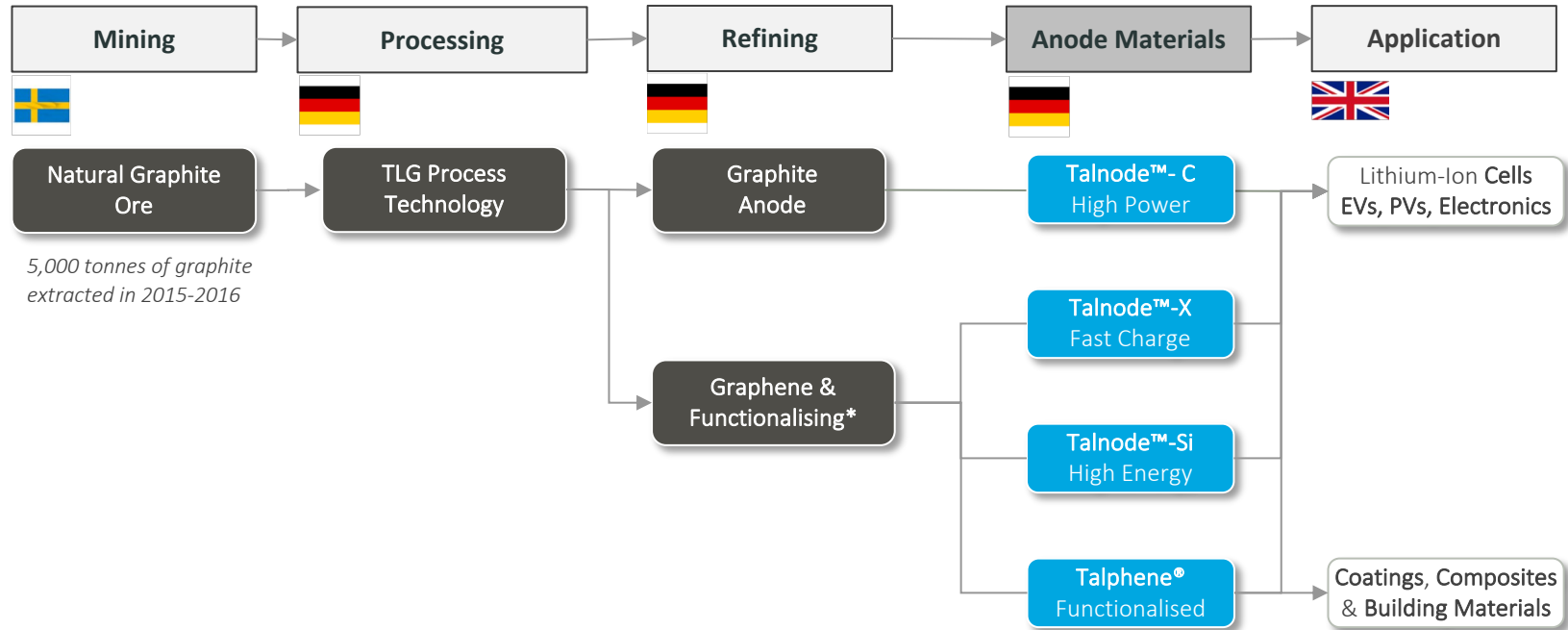
▶ **Tobias Klatte**  
Project Chemical Engineer, Germany



▶ **Dr Siva Bohm**  
Chief Technology Officer, UK

## TALGA'S LI-ION BATTERY MATERIALS

Talga is developing Li-ion battery materials alongside its graphene to meet global customer demand for energy, power, life, safety and cost. R&D takes place in UK (Cambridge). Future processing and refining planned for Sweden



Note(\*): The adding of chemical bonds to the graphene to enable it to impart its performance characteristics into the bulk material. Value-adding process required for product integration.

# Supply Chain Opportunities

Talga is developing the materials for Li-ion and next-gen batteries in Europe



Pouch cell prototype developed with Talnode product

# ► BATTERY PRODUCTS

Value added Talga-developed active anode materials with superior performance in Li-ion batteries



---

## Talnode - C

Engineered graphite anode for super stable lifetime and 20% higher capacity <sup>1</sup>

## Talnode - X

Formulated graphite anode for ultra-fast charge (0-100% in 3 minutes) <sup>2</sup>

## Talnode - Si

Graphene Silicon-anode for higher energy density (50% higher than standard) <sup>3</sup>

---

## Talphone Conductive Agent (under development)

Functionalised graphene additive for Li-ion battery cathodes

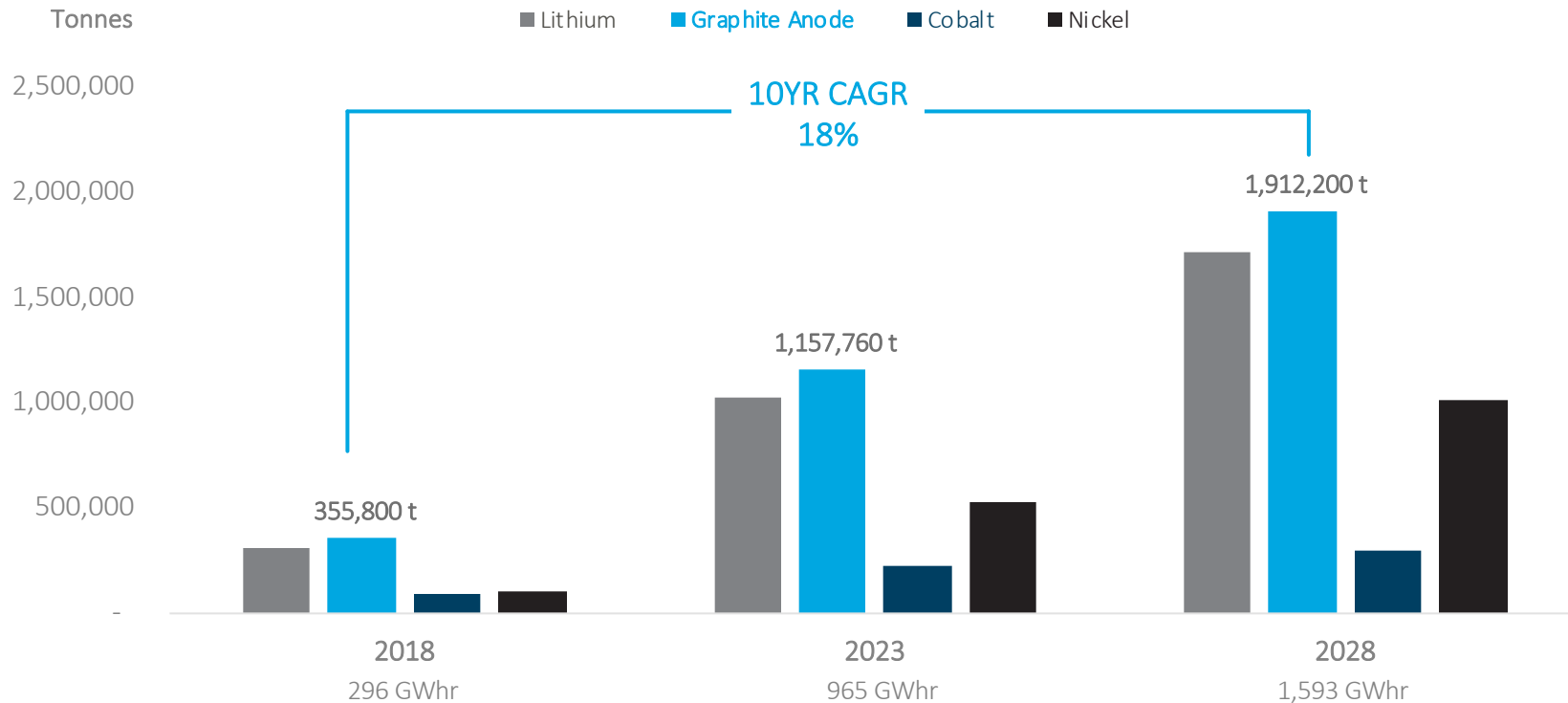
---

*Commercial samples of anode products are currently being delivered to end users, and being tested and validated towards commercial decisions*

*Note: These are not just purified and shaped graphite concentrates but fully formulated active materials ready to mix and coat anode current collector*

# ▶ GLOBAL MEGAFACTORIES COULD REACH 1,500 GWhr BY 2028

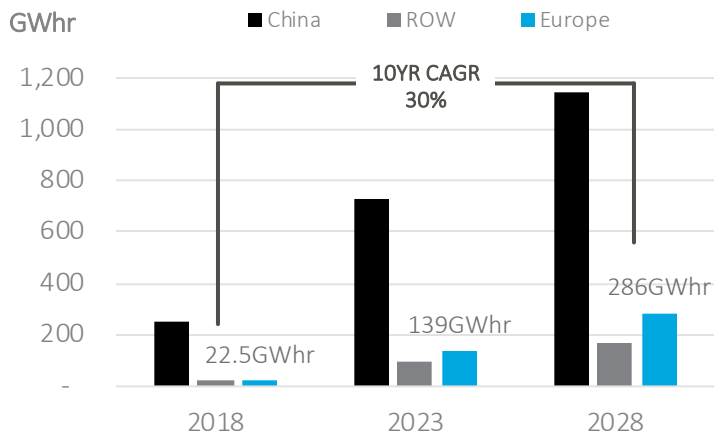
## Raw Materials Demand vs Li-ion Megafactory Capacity



Source: Benchmark Minerals. Assumes full utilisation and same technology is used requiring 1200t of graphite anode per GWh

# ▶ EUROPEAN BATTERY MEGAFACTORIES

30% growth rates underwritten by EU emission targets and legislation against ICE



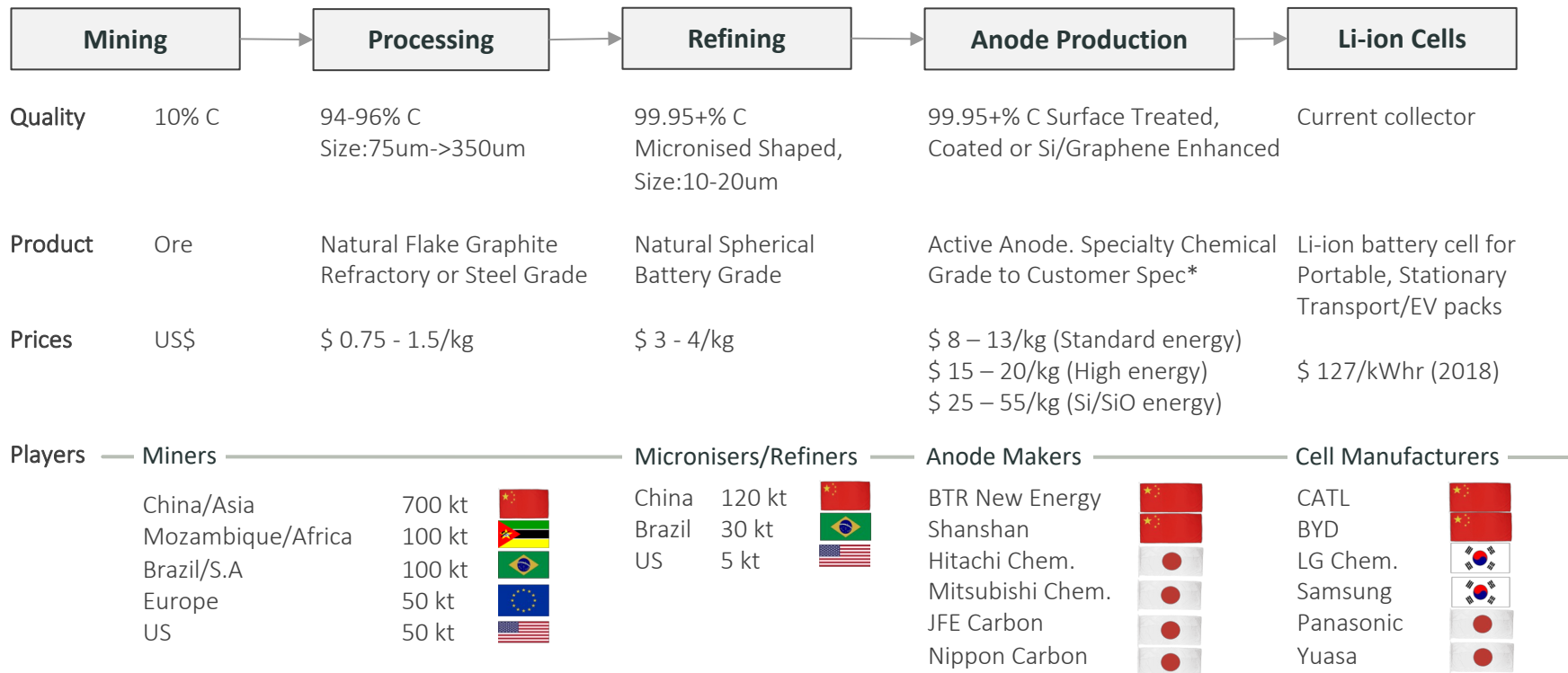
- ▶ Electrification of transport is driving automotive markets and demand for more EVs
- ▶ Location advantage to supply European Li-ion battery supply chain





# LI-ION BATTERY SUPPLY CHAIN

Lithium-ion batteries use refined carbon materials mined and processed mainly from China with synthetic and natural graphite as raw material



Note(\*): Customer Specifications relate to energy capacity, power density, life, safety, cost and performance. Pricing sources: Roskill, Benchmark Minerals, Bloomberg, Talga Analysis

# Talga's Mineral Projects - Sweden

Responsible, innovative and sustainable mineral resource development for battery supply chains

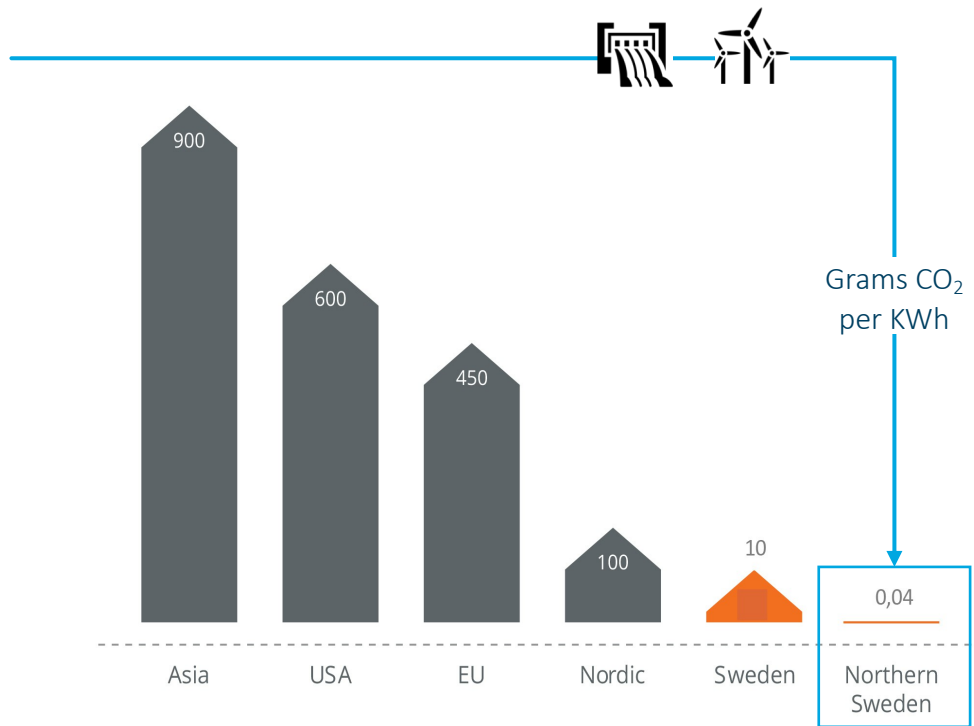
Talga staff sampling surface water, Vittangi graphite project



# ▶ NORTH SWEDEN ADVANTAGES

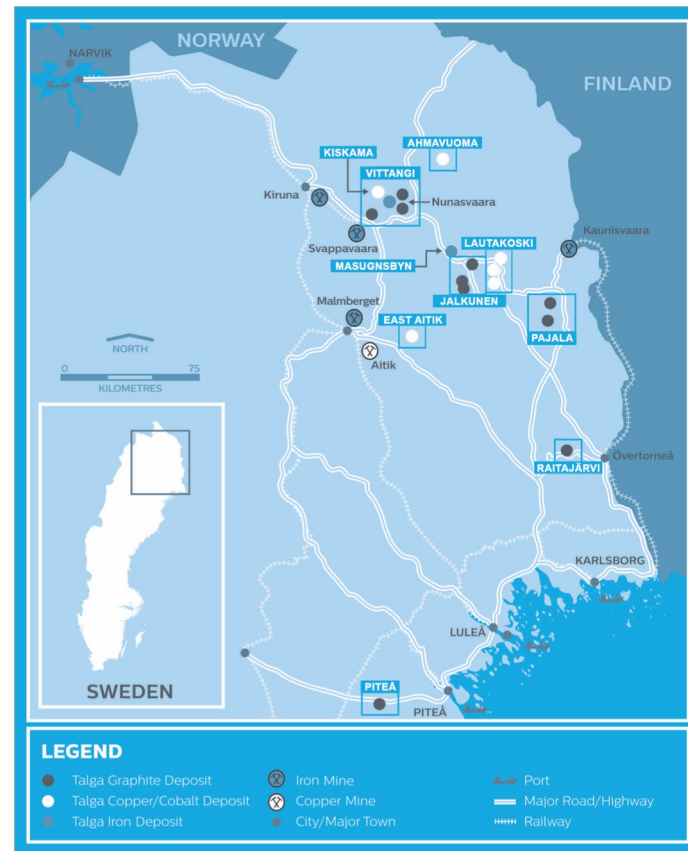
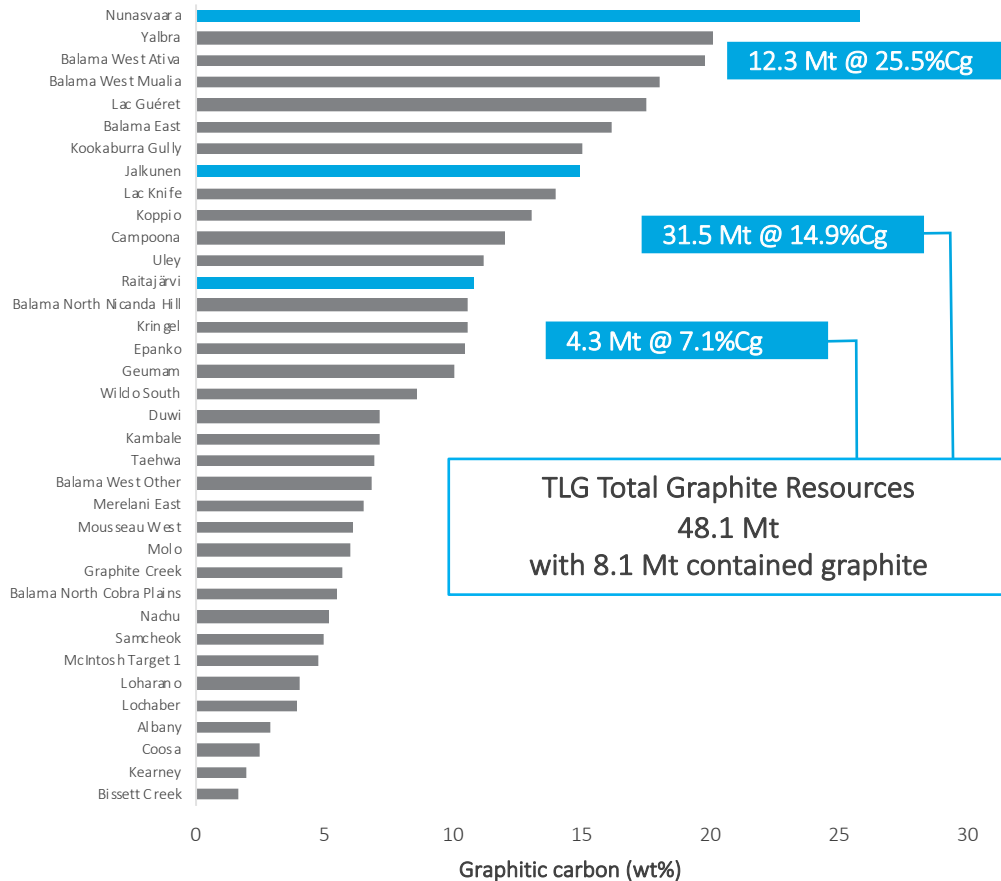
New source of long term mineral supply chain to Europe and Asia

- ▶ **Low cost** and **low CO<sub>2</sub>** sustainable power (over 18 TW/year **Hydro** & 12 TW/year **Wind**)
- ▶ **Quality existing infrastructure** roads and railway with links to ports and smelters
- ▶ **Close to emerging European battery factories** in Sweden, Poland, Hungary & Germany
- ▶ **Quality long term operating and investment** jurisdiction with 22% corporate tax rate, 0.2% mineral tax rate



Note: Data and Graphic Courtesy of "Invest in Norrbotten!"

# GLOBAL LEADING GRAPHITE RESOURCES



# VITTANGI GRAPHITE PROJECT

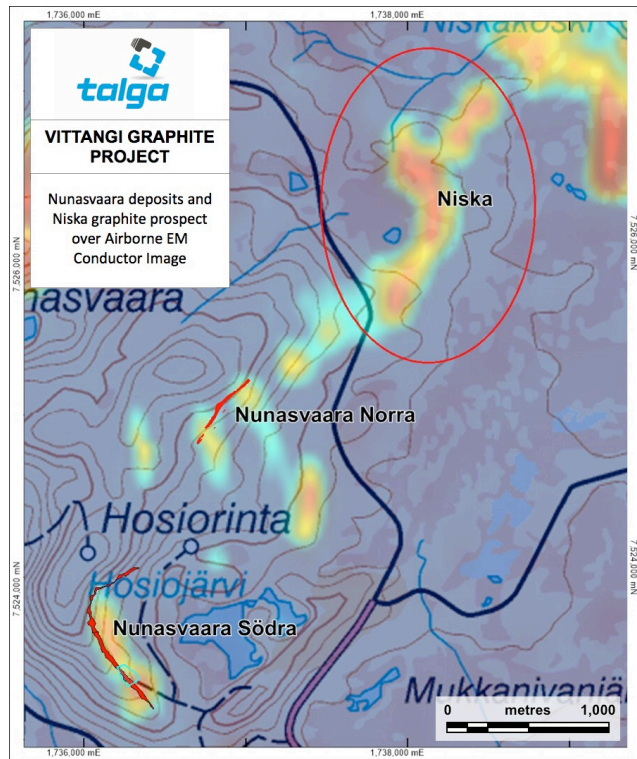
## Premier investment and logistic location

- ▶ Talga's large deposits in Sweden represent a **strategic European and Global supply opportunity**
- ▶ Vittangi Project alone has JORC Mineral Resources of **12.3 Mt @ 25.5%Cg** (10.3Mt Indicated) in the Nunasvaara deposit
- ▶ Close **proximity** to road, rail and export facilities
- ▶ Northern Sweden ideal location for Li-ion battery materials refinery
- ▶ Permit processes **underway** for mining, processing and refining
- ▶ Pre Feasibility Study due end Q1 2019



# ▶ VITTANGI GROWTH GRAPHITE EXPLORATION TARGETS

Multiple conductors support huge growth potential along strike from Nunasvaara resource



- ▶ Drill program of ~20 diamond core holes for ~1,600m underway
- ▶ Targeting extensions to the high grade Nunasvaara North resource for **future development potential, permitting and planning**
- ▶ Scheduled to **finish in late March-early April** with sample results to be released when received and analysed
- ▶ Several EM conductors with **high grade** surface samples (**up to 39%Cg**)<sup>1</sup> extend for approximately 15km strike within Vittangi
- ▶ Other JORC mineral resources already defined include Jalkunen (31.5Mt @ 14.9%Cg) and Raitajärvi (4.3Mt @ 7.1%Cg). See Appendix for details



## TALGA'S BATTERY METAL PROJECTS

Talga has built a suite of highly prospective cobalt mineral assets in parallel to its graphene-graphite projects



Kiskama Sweden's largest cobalt deposit with valuable by-product copper and gold characterised as IOCG-type.

Ahmavuoima drilling highlights include:

- 52m @ 0.24% Co, 0.59% Cu, 0.17g/t Au from 60m including 21m @ 0.38% Co, 1.12% Cu, 0.42g/t Au

Lautakoski 'wildcat' discovery drilling highlights include:

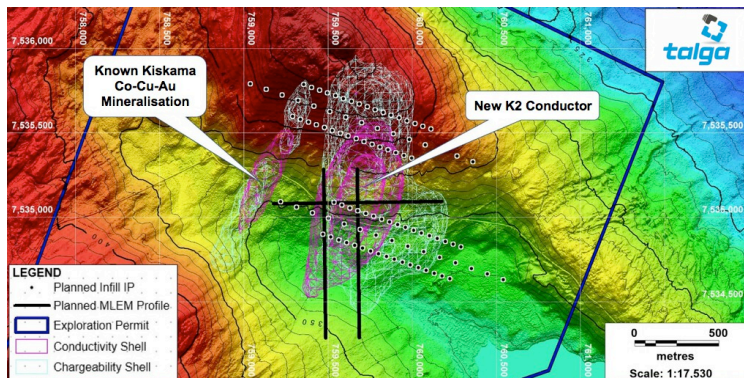
- 85.8m @ 0.18% Cu, 153ppm Co from 14.2m with grades present up to 1.5% Cu, 0.27g/t Au and 565ppm Co

Aitik East surface rock sampling just 25km east from Europe's largest copper-gold mine Aitik (36Mt/annum) include:

- 4.8% Cu, 1.2g/t Au, 66g/t Ag, 0.6% Mo plus anomalous levels of Te and Bi

# ▶ THE KISKAMA COBALT PROJECT

Sweden's largest cobalt deposit with valuable by-product copper and gold characterised as IOCG-type

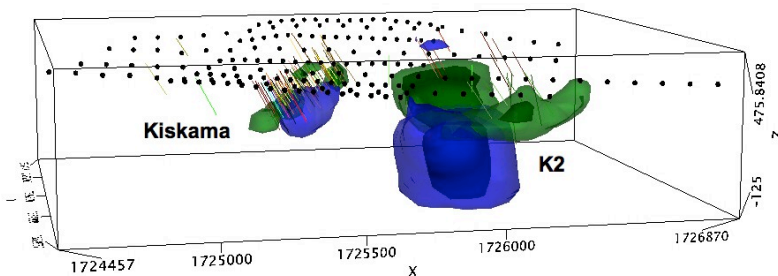


113 historic drillholes define a ~900m long and 15 to 40m wide mineralised zone, open along strike and at depth. Intercept highlights include:

- ▶ 42m @ 0.10% Co, 0.41% Cu from 11m depth including 27m @ 0.14% Co, 0.50% Cu (Kis77006)
- ▶ 33m @ 0.10% Co, 0.56% Cu from 28m (Kis80017)
- ▶ 36m @ 0.11% Co, 0.27% Cu, 0.13g/t Au from 66m (2014 Kis04)
- ▶ 17m @ 0.12% Co, 0.91% Cu from 34m (Kis80006)

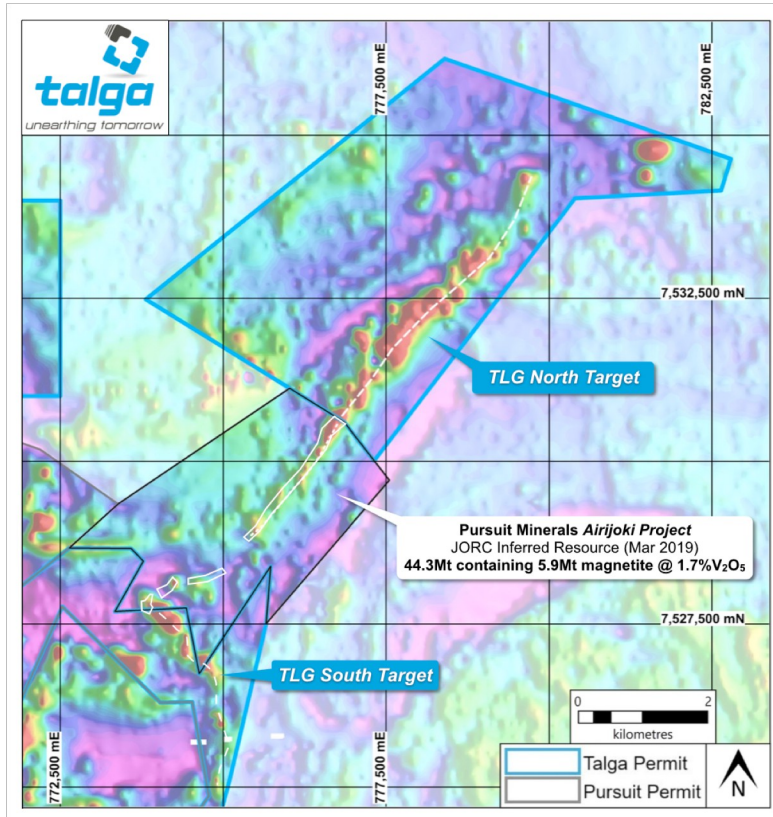
**New large conductor (K2)** located 500-1000m to the east has a conductive signature at least **twice as strong** and **double the size** of original Kiskama deposit

Permitting under way for K2 drill testing to commence in conjunction with **maiden JORC resource drilling** at Kiskama



# ► VITTANGI VANADIUM PROSPECT

Emerging magnetite-hosted vanadium potential defined by adjacent resource development



- Drilling by Pursuit Minerals Ltd (ASX:PUR) adjacent to Talga's Vittangi project tenements have intercepted exceptional thickness of vanadium mineralisation including **122m @ 2.2%V<sub>2</sub>O<sub>5</sub> (mag conc) 0.6% V<sub>2</sub>O<sub>5</sub> whole rock**, with good mass pull recoveries <sup>2</sup>
- On 8 Mar 2019 PUR announced maiden JORC Inferred resources totalling **44.3Mt** containing **5.9Mt magnetite** at 1.7%V<sub>2</sub>O<sub>5</sub> (mag concentrate) for **100,800 tonnes V<sub>2</sub>O<sub>5</sub>**
- A distinct high amplitude magnetic signature **strikes for >4km (north) and 2km (south)** <sup>1</sup> within Talga's permits
- The potential for development is considered high in this **current magnetite mining district with excellent infrastructure**. PUR have announced a scoping study is underway and due in April. Talga will review its options once the adjacent scoping study is published by PUR



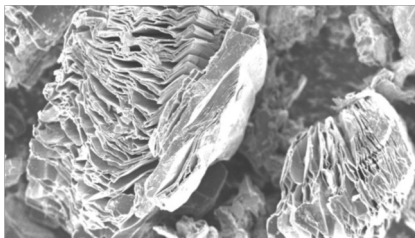
# Talga's Graphene Products

Proprietary process and technology to enable large scale quality graphene for industrial applications

Talga staff performing coating in-house coating adhesion tests

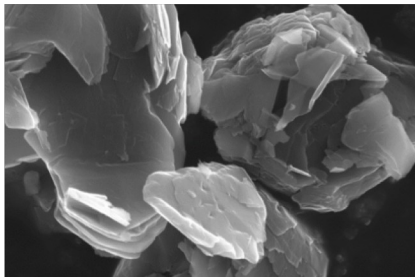
## ▶ ADVANCED MATERIALS

### Graphene and graphite product from processing of Vittangi project ore



#### Talphite

High purity micro-graphite produced using proprietary electrochemical exfoliation and concentration process. Dry powder consisting of agglomerates of graphene flakes and graphene nanoplatelets. Can be used in anode products or as a pre-cursor to make graphene.



#### Talphene Nano-Platelets

Multi-layered platelets of graphene made using combinations of electrochemical exfoliation and proprietary processes. Produces a homogeneous powder with a very high surface area and low powder density. Dispersing agents are provided under collaboration agreement to use in 2-pack or 1 pack resin media.



#### Talphene Flakes

Few layer graphene flakes made using the electrochemical exfoliation process and collected in a formulated liquid suspension to prevent agglomeration. Functionalisation, water based dispersing agents and solvents are provided under collaboration agreement to optimise mixing in resin media.

# ► COATINGS AND COMPOSITES

Talphen functionalised additives and formulations for revolutionary performance and lower eco-impact



## Pre Treatment and Epoxy Coatings <sup>1</sup>

Increased strength, abrasion resistance and corrosion protection without toxic chrome and metals

## Packaging Applications <sup>2</sup>

Smart packaging, longer food shelf life and increased recycling

## Conductive Inks <sup>3</sup>

Superior electrical conductivity, flexibility and cost for printed electronics, sensors and smart labels

## Thermoplastic polyurethanes<sup>4</sup>

Enabling advanced biomedical healthcare products and ship coatings with lower impacts on marine environment

## Carbon Fibre Reinforced Polymers <sup>5</sup>

Improved strength, toughness, weight and conductivity of CFRP to enable metal-free lightning strike and de-icing



*Applications: Marine infrastructure and offshore oil & gas production protection, cleaner and lighter automotive and aerospace materials, reducing plastic and decreasing food losses, improving performance of biomedical and solar devices*



# BUILDING MATERIALS

## Talphen admixtures and aggregates for improved strength, thermal and electrical conductivity

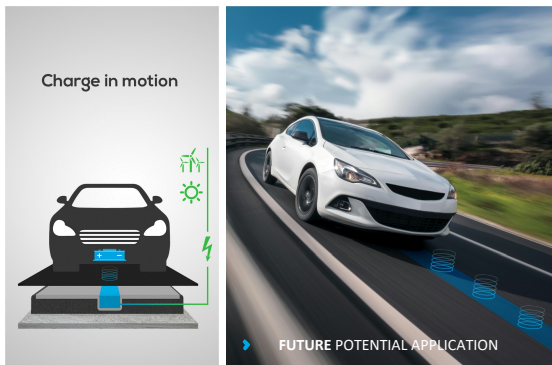


### Admixtures <sup>1</sup>

Improving concrete strength (to 8.2N/mm<sup>2</sup> flexural and 54N/mm<sup>2</sup> compressive) aiding construction with lower weight, better costs and emissions

### Conductive Aggregates <sup>2</sup>

Enabling thermally and electrically conductive materials for smarter construction and new applications, attaining electrical resistance of 0.05 ohm.cm volume



*Applications: underground powerline heat dissipation, pipe-free underfloor heating, chemical-free de-iced road-bridge-tarmac areas, static and dynamic wireless charging of electric vehicles*

## ▶ SELECTED CURRENT COMMERCIAL PARTNERS

Talga products are being developed in a range of customer engagements with quality and significant end users



**BillerudKorsnäs**, listed on Nasdaq Stockholm, provides packaging materials and solutions to customers in ~ 100 countries. The company has an annual turnover of about SEK 22 billion



**Jaguar Land Rover** is a British multinational automotive company and subsidiary of Indian automotive company Tata Motors. Known as JLR they are currently having success with their fully electric EV SUV the I-Pace



**BASF** is the largest chemical producer in the world and operates across 80 countries with nearly 400 production sites. In 2018 BASF generated sales of around €63 billion



**The Schunk Group** is a large private German based globally operating carbon products and technology group, that have reported turnover in 2017 of about €1.2 billion



**Bosch** is an engineering and industrial technology conglomerate recognised as the world's largest supplier of automotive components. Bosch announced sales revenue in 2016 of ~€73.1 Billion and spent approximately €7 Billion on research and development over the same period



**Johnson Matthey** is a British multinational speciality chemicals and sustainable technologies company, with considerable product range sold into the automotive and battery markets. It is listed on the London Stock Exchange and is a constituent of the FTSE 100 Index

# CORPORATE OVERVIEW

## DIRECTORS



▶ **Terry Stinson**  
Non-Executive Chairman



▶ **Mark Thompson**  
Managing Director



▶ **Grant Mooney**  
Non-Executive Director



▶ **Steve Lowe**  
Non-Executive Director

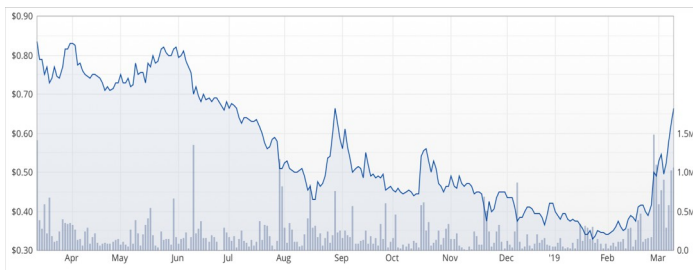


▶ **Ola Rinnan**  
Non-Executive Director

## SHARE PRICE PERFORMANCE

Share price (A\$) 12 months

Volume (m)



## MAJOR SHAREHOLDERS

Smedvig – <i>Scandinavian based family office</i>	11.7%
Mark Thompson – <i>Managing Director</i>	6.5%
HSBC Custody Nominees (Australia)	5.2%
J P Morgan Nominees (Australia)	4.5%
Pelmer Securities	4.2%
Citicorp Nominees	3.7%
<b>Top 20</b>	<b>52.8%</b>

## FINANCIAL INFORMATION (ASX:TLG)

Shareholders	~4,100
Share price	A\$0.665
52 week low / high	A\$0.325 / A\$0.92
Shares outstanding <sup>1</sup>	218.2m
<b>Market Capitalisation</b>	<b>A\$145.1m</b>
Cash (31-Dec-2018)	~A\$13.8m
Debt (31-Dec-2018)	Nil
<b>Enterprise value</b>	<b>A\$131.3m</b>

Source: IRESS, company filings. As at 11 March 2019 unless stated otherwise.

<sup>1</sup> Excludes 19.9m unlisted options (mostly employees and directors) with exercise price range up to A\$1.02 and expiry date range 3 May 2019 to 20 Feb 2022.

Primary listing on ASX (code:TLG) with trading in Frankfurt (TGX) and USA (TLGRF)

## ► NEXT STEPS

Talga's large graphite deposits in Sweden represent a strategic European and Global supply opportunity

- Delivery of the Vittangi project pre-feasibility study (end of Q1 2019) and lodgment of **permits** to progress to mine and production facility construction
- Accelerated development and marketing of Talnode products, to attract strategic partners and offtake outcomes, and support option to pilot current ore stock into salable products in Q3-4 2019
- Results of battery tests from Talnode developments plus ongoing Faraday Project programs
- Drilling results (Vittangi-Niska) and metallurgy results (Jalkunen-Raitajärvi-Vittangi)
- Continued **expansion** of European operations, in particular the newly established sales and marketing unit.
- Continued capacity increase and performance optimisation of expanded test facility in Germany for **increased graphene product commercial sample production**
- Continued exploration and development of non-core battery metals projects, including drilling and evaluation of resource potential, for **value-adding in support of higher valuations in various divestment scenarios/attraction of strategic partners.**

## CONTACT US

### **Talga Resources Ltd**

First Floor, 2 Richardson Street, West Perth WA 6005, Australia

P | +61 8 9481 6667

E | [admin@talgaresources.com](mailto:admin@talgaresources.com)

W | [www.talgaresources.com](http://www.talgaresources.com)

---

### **Talga Technologies Limited**

The Bradfield Centre, 184 Cambridge Science Park, Cambridge CB4 0FQ, UK

P | +44 1223 420 416

E | [admin@talgatechnologies.com](mailto:admin@talgatechnologies.com)

W | [www.talga.co.uk](http://www.talga.co.uk)

---

### **Talga Graphene AB / Talga Battery Metals AB**

Storgatan 7, 972 38 Luleå, Sweden

---

### **Talga Advanced Materials GmbH**

Prof.-Hermann-Klare-Str. 25, 07407 Rudolstadt, Germany

P | +49 3672 476 693 0

E | [info@talgagmbh.com](mailto:info@talgagmbh.com)



# APPENDIX AND STATEMENTS

## Competent Person's Statements

The information in this document that relates to exploration results is based on information compiled by Amanda Scott, a Competent Person who is a Member of the Australian Institute of Mining and Metallurgy (Membership No.990895). Amanda Scott is a full-time employee of Scott Geological AB. Amanda Scott has sufficient experience, which is relevant to the style of mineralisation and types of deposits under consideration and to the activity which has been undertaken to qualify as a Competent Person as defined in the 2012 edition of the Australasian Code for Reporting of Exploration Results, Mineral Resources and Ore Reserves (JORC Code). Amanda Scott consents to the inclusion in the report of the matters based on her information in the form and context in which it appears.

The information in this report that relates to Graphite Resource Estimation for the Vittangi Project is based on information compiled by Oliver Mapeto and reviewed by Albert Thamm. Both Mr Mapeto and Mr Thamm are consultants to the Company. Mr Mapeto is a Member of both the Australian Institute of Mining and Metallurgy (Membership No.306582) and Australian Institute of Geoscientists (Member No 5057) and MR Thamm (Member No 203217) is a Fellow Member of the AusIMM.

Both Mr Mapeto and Mr Thamm have sufficient experience relevant to the styles of mineralisation and types of deposits which are covered in this document and to the activity which both are undertaking to qualify as a Competent Person as defined in the 2012 edition of the "Australasian Code for Reporting of Exploration Results, Mineral Resources and Ore Reserves" ("JORC Code"). Mr Mapeto and Mr Thamm consent to the inclusion in this report of the Matters based on this information in the form and context in which it appears.

The information in this report that relates to Exploration Targets is based on information compiled and reviewed by Mr Simon Coxhell, a consultant to the Company and a member of the Australian Institute of Mining and Metallurgy and Mr Mark Thompson, who is an employee of the Company and a member of the Australian Institute of Geoscientists. Mr Thompson and Mr Coxhell have sufficient experience which is relevant to the activity which is being undertaken to qualify as a "Competent Person" as defined in the 2012 Edition of the "Australasian Code for Reporting of Exploration Results, Mineral Resources and Ore Reserves" ("JORC Code"). Mr Thompson and Mr Coxhell consent to the inclusion in the report of the matters based on this information in the form and context in which it appears.

The information in this report that relates to Graphite Resource Estimation for the Jalkunen and Raitajärvi Projects is based on information compiled and reviewed by Mr Simon Coxhell. Mr Coxhell is a consultant to the Company and a member of the Australian Institute of Mining and Metallurgy. Mr Coxhell has sufficient experience relevant to the styles of mineralisation and types of deposits which are covered in this document and to the activity which he is undertaking to qualify as a Competent Person as defined in the 2012 edition of the "Australasian Code for Reporting of Exploration Results, Mineral Resources and Ore Reserves" ("JORC Code"). Mr Coxhell consents to the inclusion in this report of the Matters based on this information in the form and context in which it appears.

## Cautionary Statement

Any data on the scoping study referred to in this report is based on low level technical and economic assessments, and is insufficient to support estimation and economic assessments, and is insufficient to support estimation of Ore Reserves or to provide assurance of an economic development case at this stage, or to provide certainty that the conclusion of the scoping study will be realised. The Company confirms that all material assumptions and technical parameters underpinning the scoping study results and projections in this release continue to apply and have not materially changed. The use of the word "ore" in the context of this report does not support the definition of 'Ore Reserves' as defined by the 2012 Edition of the 'Australasian Code for Reporting of Exploration Results, Mineral Resources and Ore Reserves'. The word 'ore' is used in this report to give an indication of quality and quantity of mineralised material that would be fed to the processing plant and is not to be assumed that 'ore' will provide assurance of an economic development case at this stage, or to provide certainty that the conclusion of the scoping study will be realised.



# ▶ GRAPHITE INVENTORY

## Nunasvaara JORC (2012) Mineral Resource (17% Cg cut-off)

JORC 2012 Classification	Tonnes	Graphite (%Cg)
Indicated	10,700,000	25.7
Inferred	1,600,000	23.9
<b>Total</b>	<b>12,300,000</b>	<b>25.5</b>

## Jalkunen JORC (2012) Mineral Resource (5% Cg cut-off)

JORC 2012 Classification	Tonnes	Graphite (%Cg)
Inferred	31,500,000	14.9

## Raitajärvi JORC (2004) Mineral Resource<sup>1</sup> (5% Cg cut-off)

JORC 2014 Classification	Tonnes	Graphite (%Cg)
Indicated	3,400,000	7.3
Inferred	900,000	6.4
<b>Total</b>	<b>4,300,000</b>	<b>7.1</b>

## Talga Graphite Exploration Targets <sup>2</sup> 0-100m Depth

Project	Exploration Target	Tonnes (0-100m Vertical Depth)		Graphite (%Cg)	
		Min.	Max.	Min.	Max.
Vittangi	Nunasvaara	62,400,000	93,600,000	20	30
	Kotajärvi	16,640,000	30,160,000	20	25
	Maltosrova	20,800,000	52,000,000	20	25
Jalkunen	Tiankijokki	2,600,000	5,200,000	15	25
	Nybrännan	5,200,000	10,400,000	20	30
	Suinavaara	2,600,000	5,720,000	15	25
	Lautakoski	26,000,000	52,000,000	15	25
	Subtotal	136,240,000	249,080,000	19	27
<b>Rounded Total</b>		<b>136,000,000</b>	<b>250,000,000</b>	<b>18</b>	<b>25</b>