



Talga Gold Ltd

March 2011 Update Presentation

Talga Gold Ltd Corporate Snapshot

- Company listed on ASX July 2010
ASX:TLG
Raised \$5m @ 20c
- 40.3m shares
1.1m options (unlisted)
- 100% equity in all gold projects
- Major shareholders
Directors (Thompson) 23%
Vendor 5%
Institution 5%
- Market cap \$12m @ last price 30c



Designed for Investor Performance

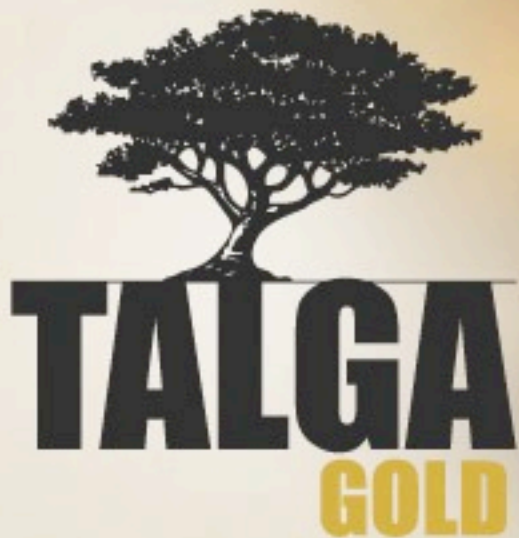
<i>Capital Structure</i>	<i>TLG</i>
Pre-IPO Shares including Vends	12,150,000
Seed Capital @ 10c	3,200,000
IPO Shares \$5m @ 20c	25,000,000
Total Shares	40,350,000
Directors (unlisted) Options	1,100,000
Fully diluted Market Cap @ 30c	\$12,435,000
<i>Shareholders</i>	
Public IPO	62%
Directors and Management	25%
Seed Capitalists & Vendor	13%

Listed 9 July 2010
100% equity in
gold projects

Top 20 own 50%

20c exp. Dec 2012

Primed for
high growth



Board and Management



Sean Neary

B.Ec, M.Law (Tax), CPA

Chairman &
Non-Executive Director



Mark Thompson

MAIG, MSEG

Managing Director



Piers Lewis

B.Comm, CA

Company Secretary &
Non-Executive Director

Senior Team

Darren Griggs

Senior Exploration
Geologist

Kane Freeman

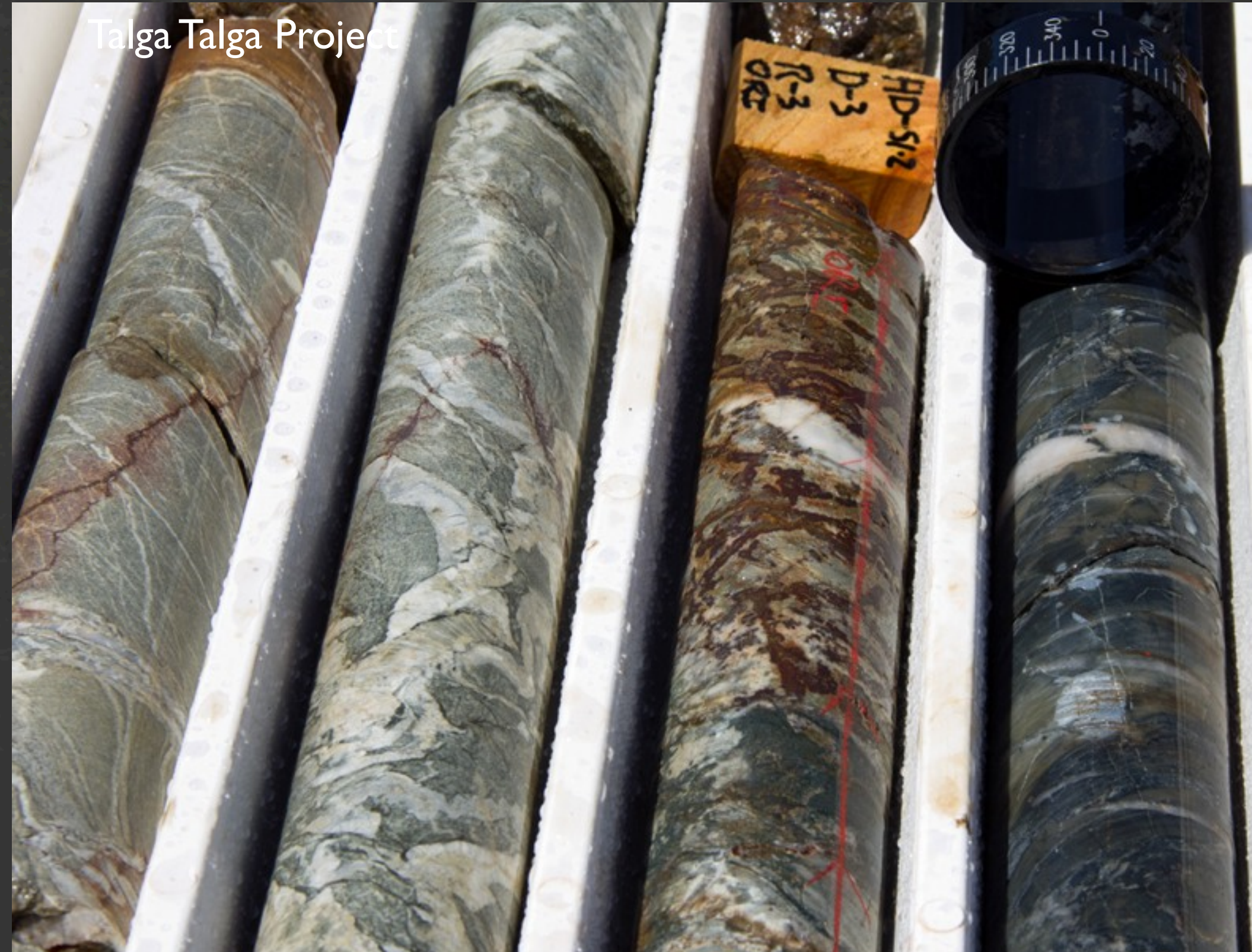
Field Manager

Marguerite Mee

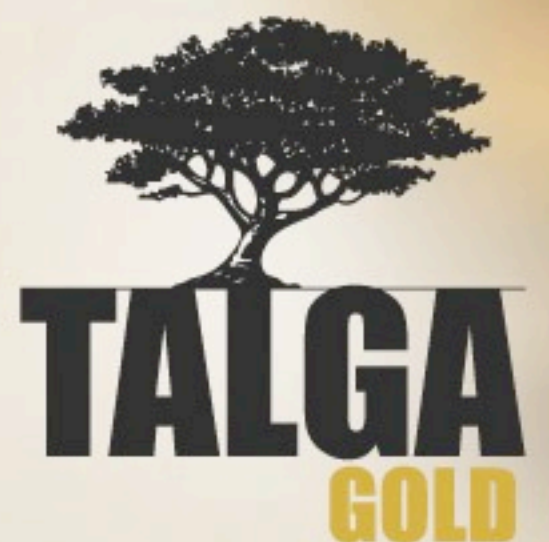
Office Manager



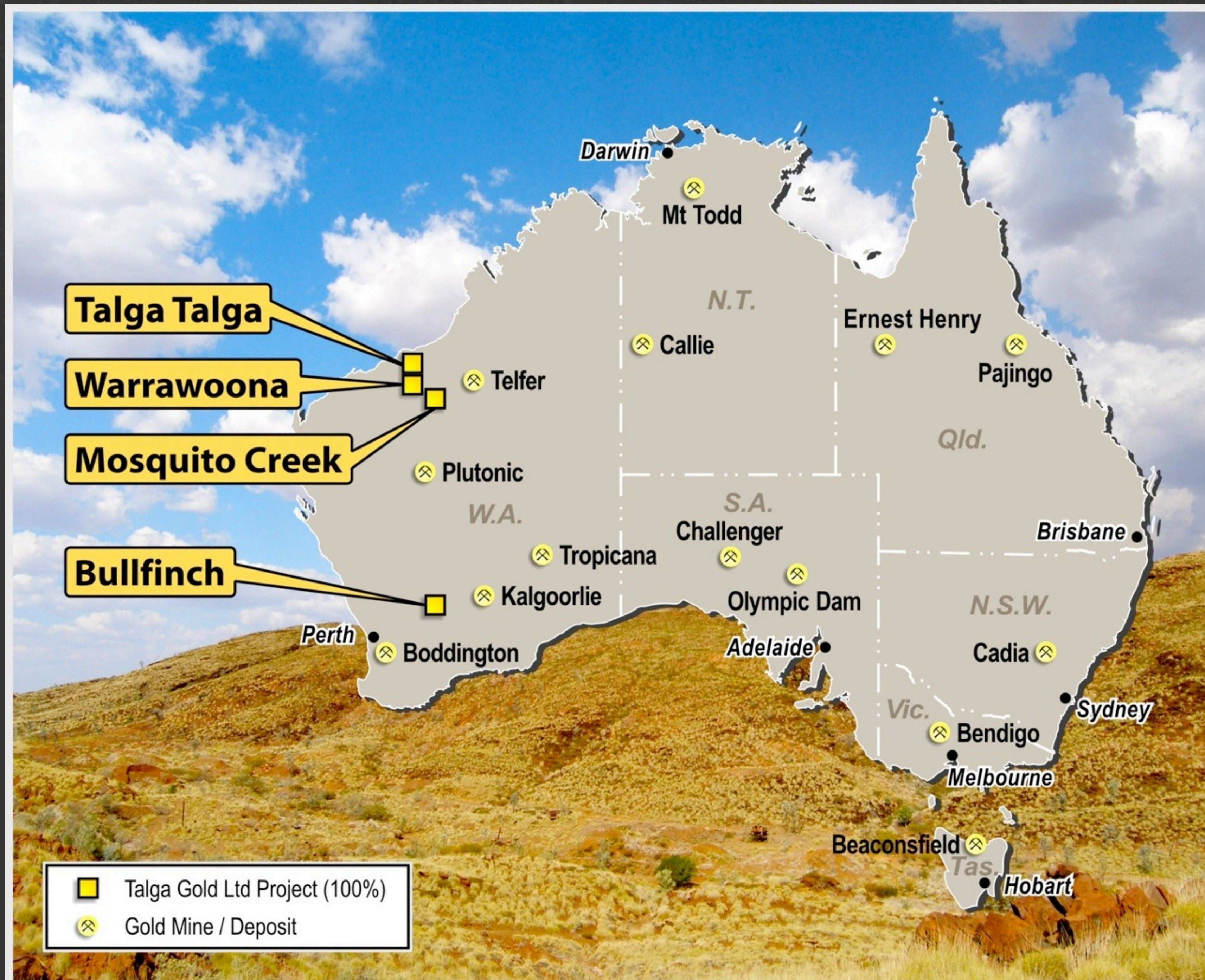
Active Explorer - Exploration in 3Q's since Listing



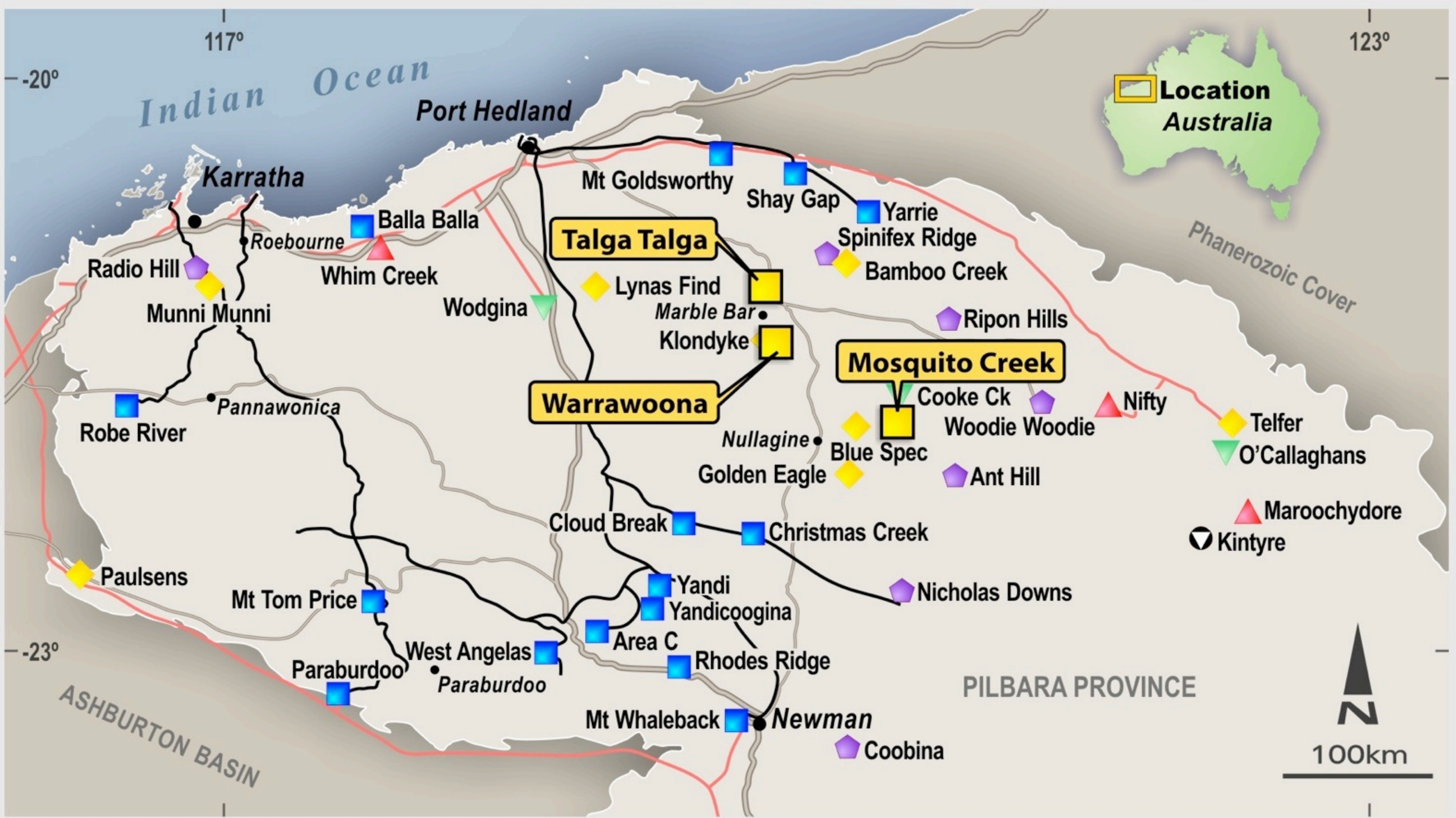
- Drilled 41 RC holes totalling 2,123 metres at Talga Talga and Warrawoona Projects
- Drilled eight Diamond holes oriented core at McPhees of Talga Talga project
- Sampled 6 grids with 1,688 geochemical samples across three projects



Talga Gold Project Locations



Pilbara Region - Rich Mineral Endowment



Talga Gold Project

Town

Highway

Road

Railway

Gas Pipeline

Iron Deposit

Base Metal

Precious Metal

Steel Alloy Metal

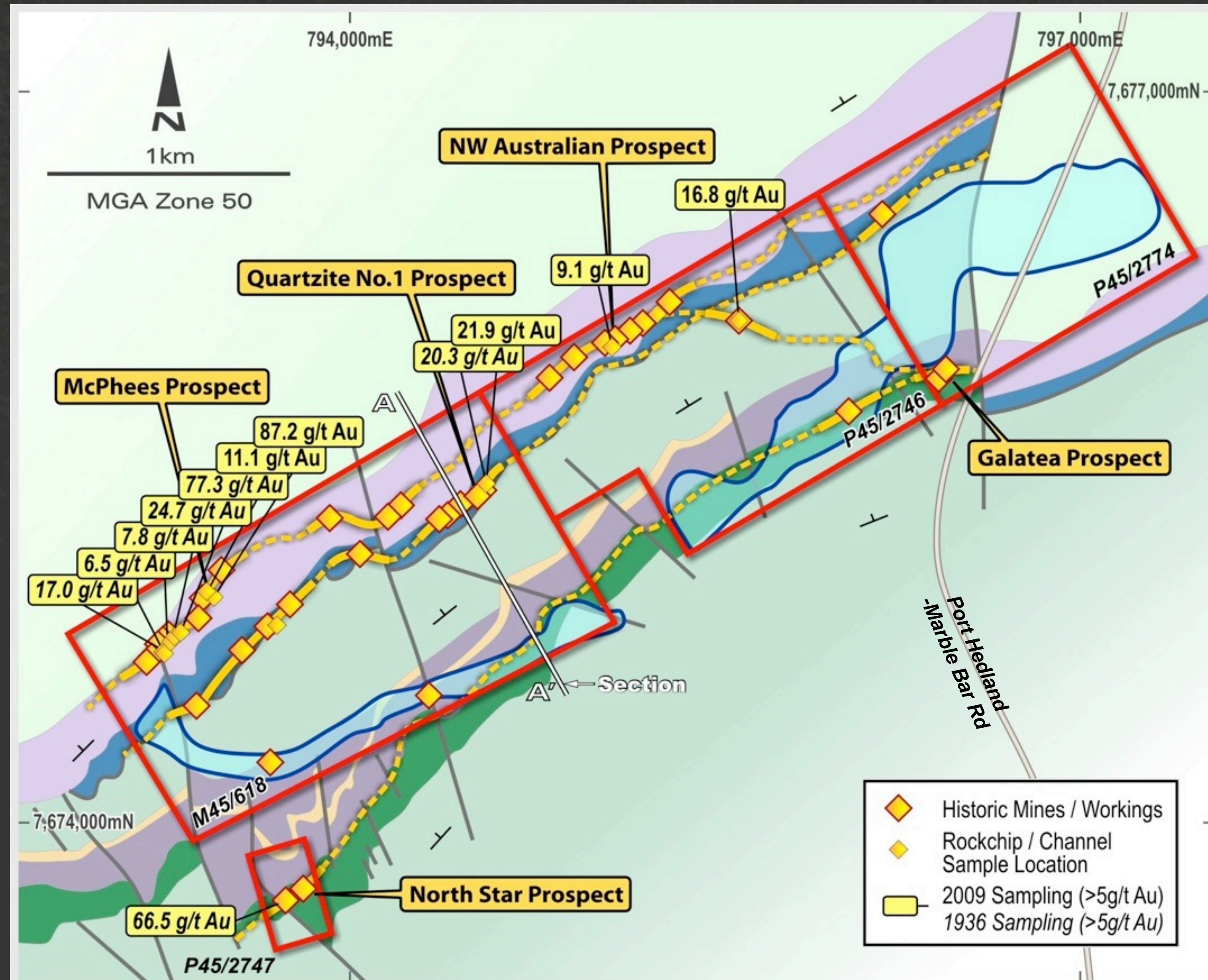
Specialty Metal

Energy Metal

LEGEND



Talga Talga Project (TLG 100%)



- Abundant near-surface high-grade gold zones in rock sampling & untested historic workings
- Three parallel gold 'lines' over 5 km strike
- Advanced Tenure & Logistics; Granted Mining Lease over 2km strike and sealed road access to Port Hedland.

LEGEND

 Talga Gold Tenement
 Main Road
 Fault
 Dip Direction

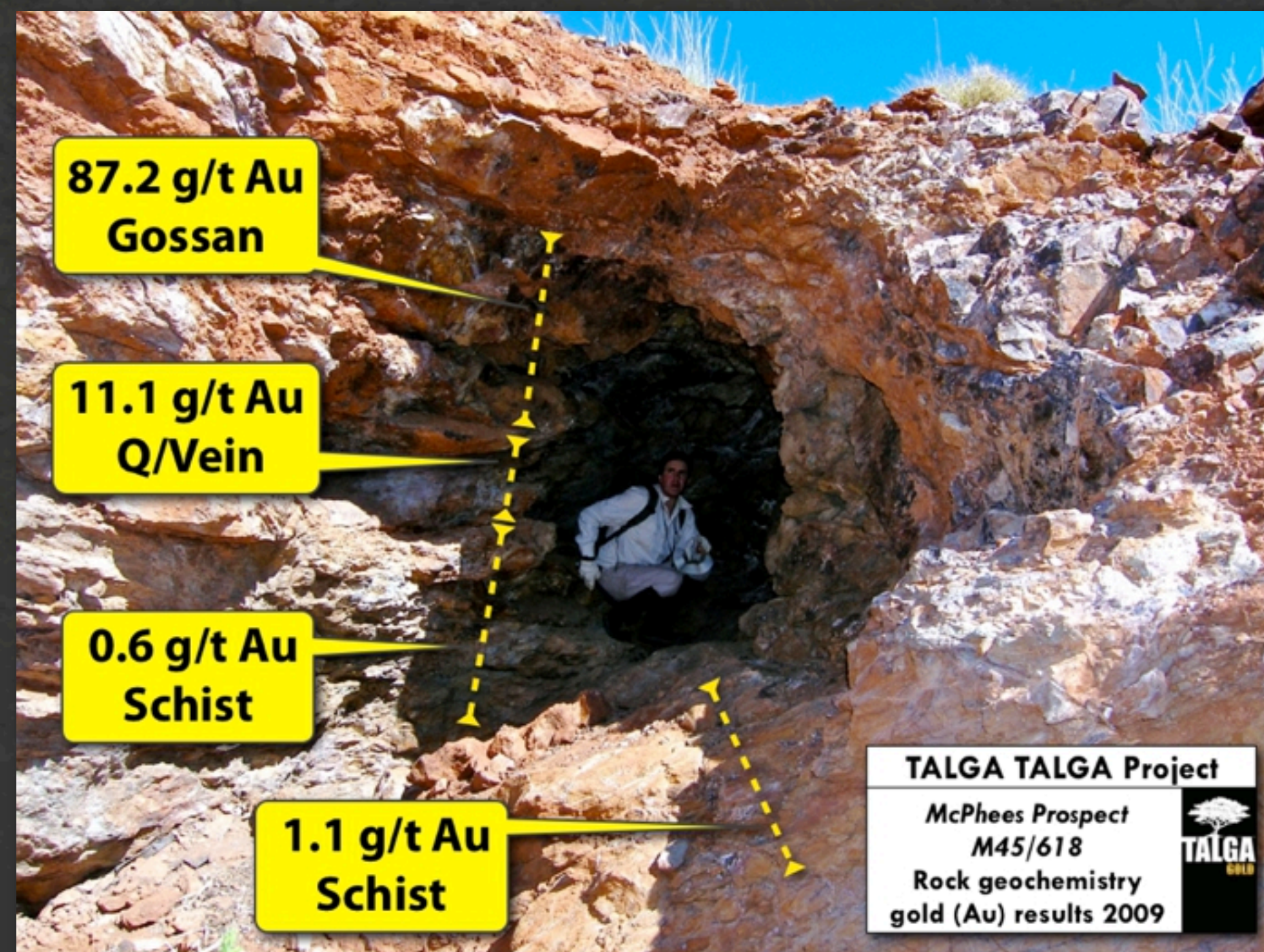
 Placer Deposits
 Gold Lode Outcrop
 Gold Target Zone

Mt Ada Basalt
 Basalt Flows
McPhee Formation
 Sheared Ultramafic
 Banded Chert / BIF

North Star Basalt
 Mafic Undivided
 Clastic Sediments
 Ultramafic Sill
 Komatiite Schist



Talga Talga First Prospects



McPhees Prospect

- Gold hosted in Qtz-Sulph-Carb veined and sheared Ultramafic
- High grade rockchip channel results - up to 87.2 g/t Au
- Never previously drill tested for gold



Quartzite Prospect

- Chert-hosted lodes up to 22 g/t Au in TLG sampling
- Fine gold particle size indicated in repeatability
- Never previously drill tested
- 5km strike in project with 2km strike in granted mining lease

Talga Talga Geology - Shallow dipping

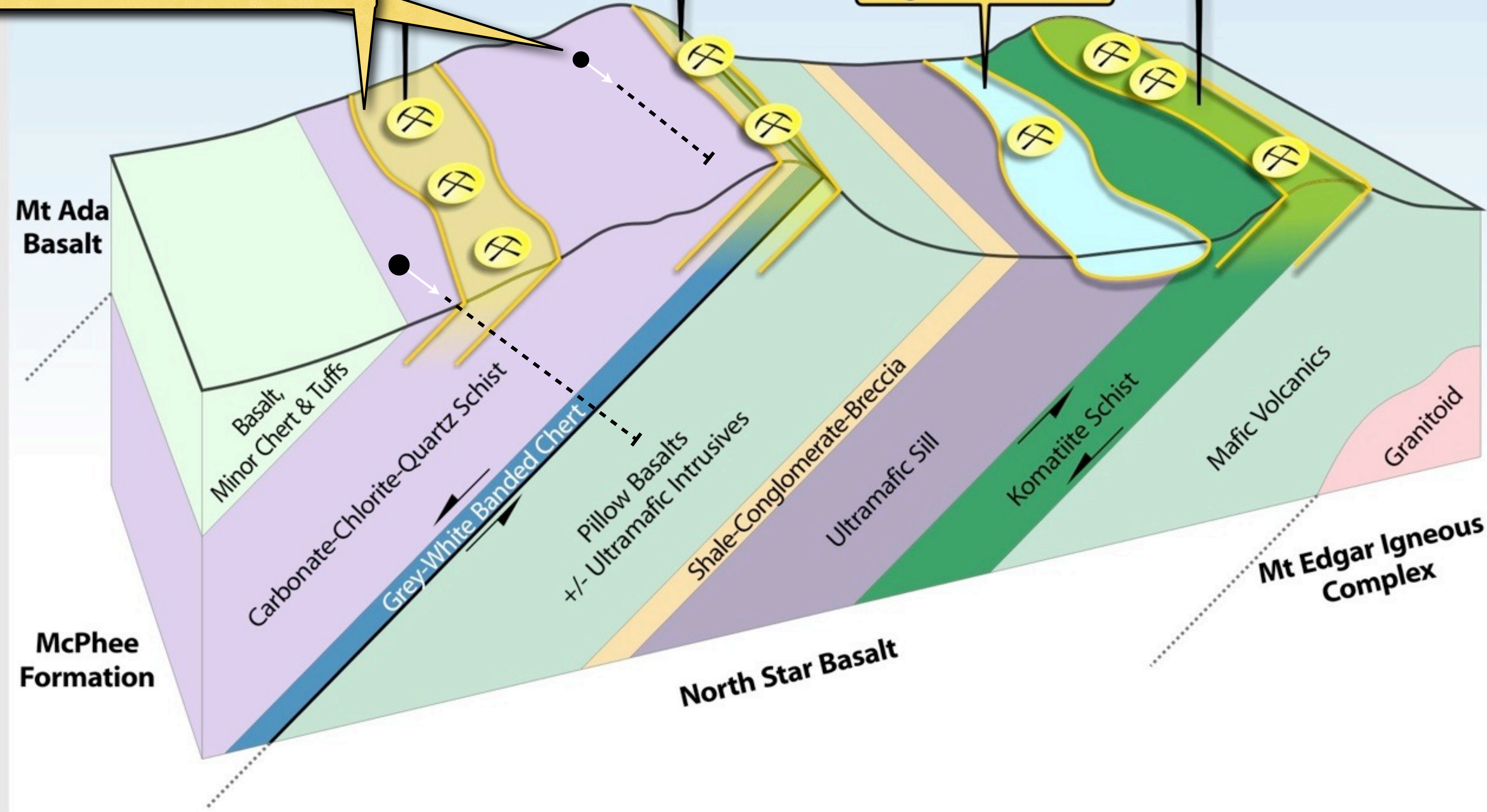
41 RC drill holes Oct 2010
8 diamond drill holes Mar 2011

McPhees Gold Zone
65.6g/t average Historic Production
360m strike surface sampling ave. 23.8g/t Au
2km strike gold zone in granted Mining Lease

North Star Gold Zone
+ 4km shear zone in komatiite-ultramafic
Channel sampling of historic workings
includes 66.5g/t Au from 16m depth

Quartzite - BIF Gold Zone
4.7km strike gold zone - never drilled
includes 21.9g/t Au lodes at surface

Talga Gold Placers



Selected Drilling Highlights - Inaugural RC Program

Hole Id	Easting	Northing	EOH	Azi	Dip	From (m)	To (m)	Width	Grade g/t Au
Talga Talga Project - McPhees Prospect									
TTRC003	793251	7674826	42	125	-60	32	35	3	24.82
		<i>including</i>				32	33	1	66.90
TTRC006	793256	7674786	32	0	-90	23	25	2	3.82
TTRC010	793421	7674929	26	0	-90	20	23	3	2.04
TTRC017	794462	7675480	92	185	-60	36	41	5	1.14
TTRC018	794475	7675487	94	130	-60	51	53	2	2.44
TTRC023	793223	7674747	30	125	-60	17	18	1	13.75
TTRC024	793223	7674749	36	0	-90	21	24	3	1.41
TTRC029	793362	7674983	114	125	-60	54	61	7	14.40
		<i>including</i>				54	55	1	73.50
Warrawoona Project - Cutty Sark Prospect									
CSRC001	794095	7641142	42	205	-60	13	18	5	1.96
		<i>including</i>				13	15	2	4.35
CSRC002	794108	7641163	72	205	-60	39	50	11	1.56
		<i>including</i>				39	44	5	3.29
		<i>includes</i>				40	41	1	14.60

high grade at shallow depth

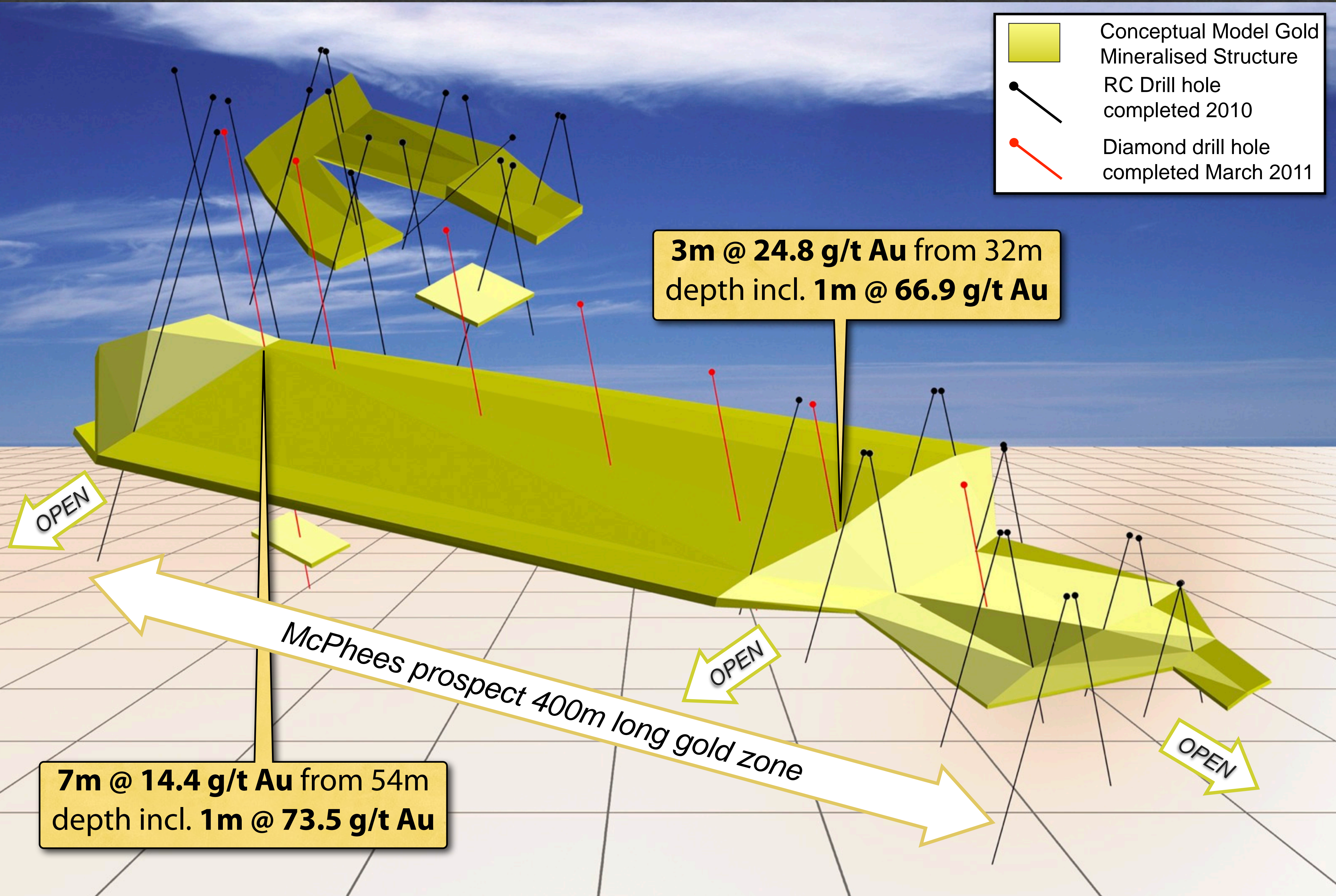
high grade at shallow depth

250m along strike from TTRC003

- All drill hole samples riffle-split 1m intervals and assayed as 1m intervals by ALS-Chemex in Perth, Western Australia.
- All samples assayed by Aqua Regia methods and >1.0 g/t Au grade samples assayed by 50 gram ore-grade Fire Assay method.
- Mineralised intercepts are calculated using >0.1 g/t Au cutoff and selected as significant where total intersection >1.0g/t Au.
- Drilling assay results all announced previously. For full details see TLG releases on ASX 9/11/2010 and 25/11/2010.



McPhees Prospect - Follow up Drilling March 2011

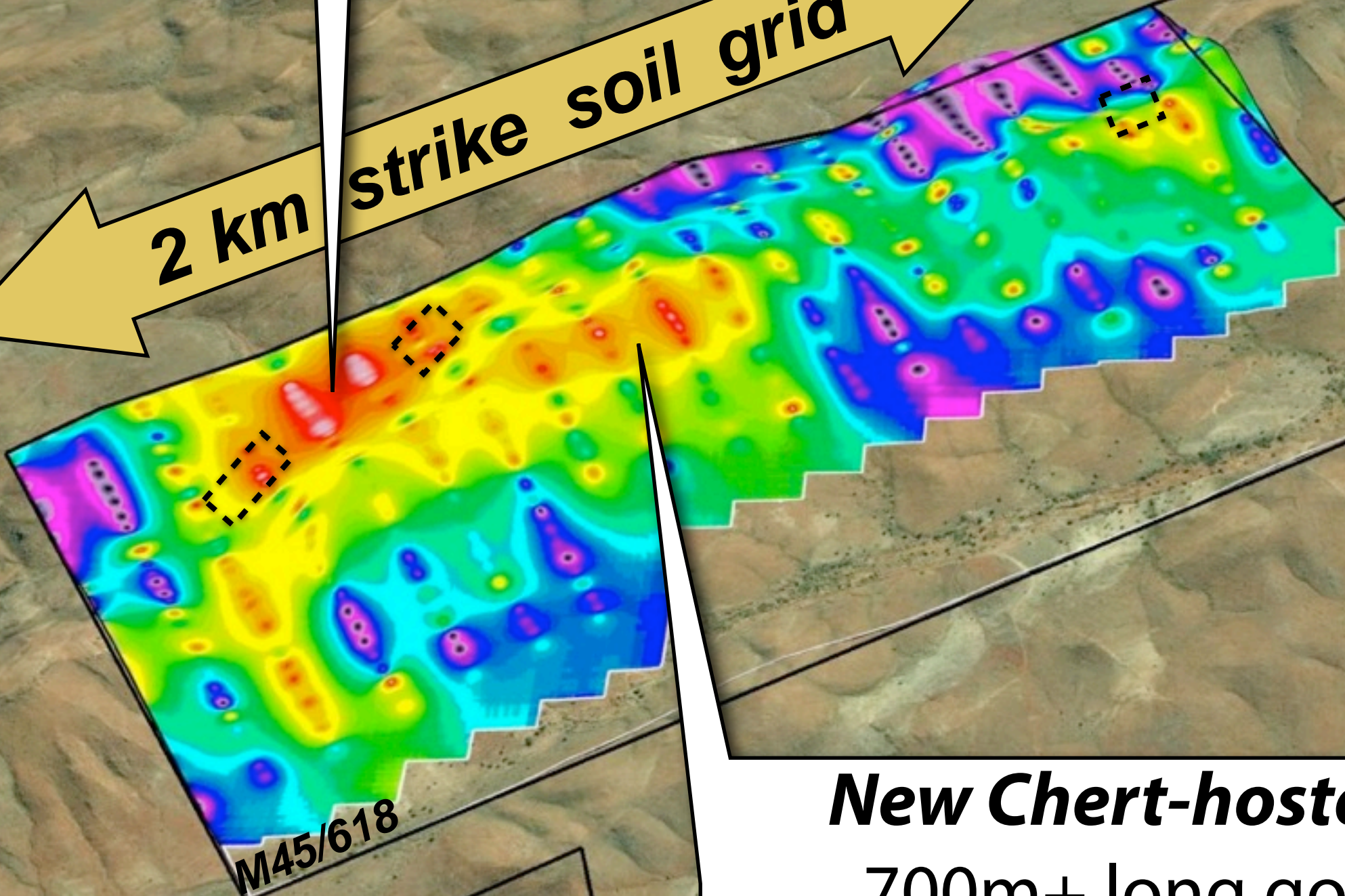


Talga Talga future; new high grade gold-in-soil targets

McPhees Prospect
gold in soil to 14.6 g/t Au in
untested zone between RC drillsites

3 km strike untested

2 km strike soil grid



New Chert-hosted Gold Target
700m+ long gold in soil zone



Scale 1.0 km

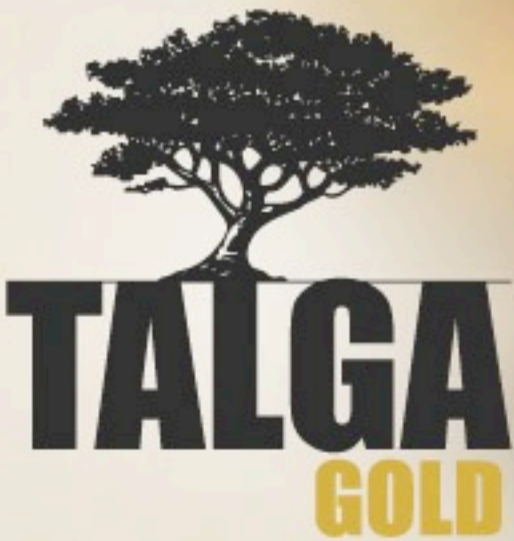
Talga Talga Project
Gold in Soil Geochemistry

14,600 ppb Au
1 ppb Au

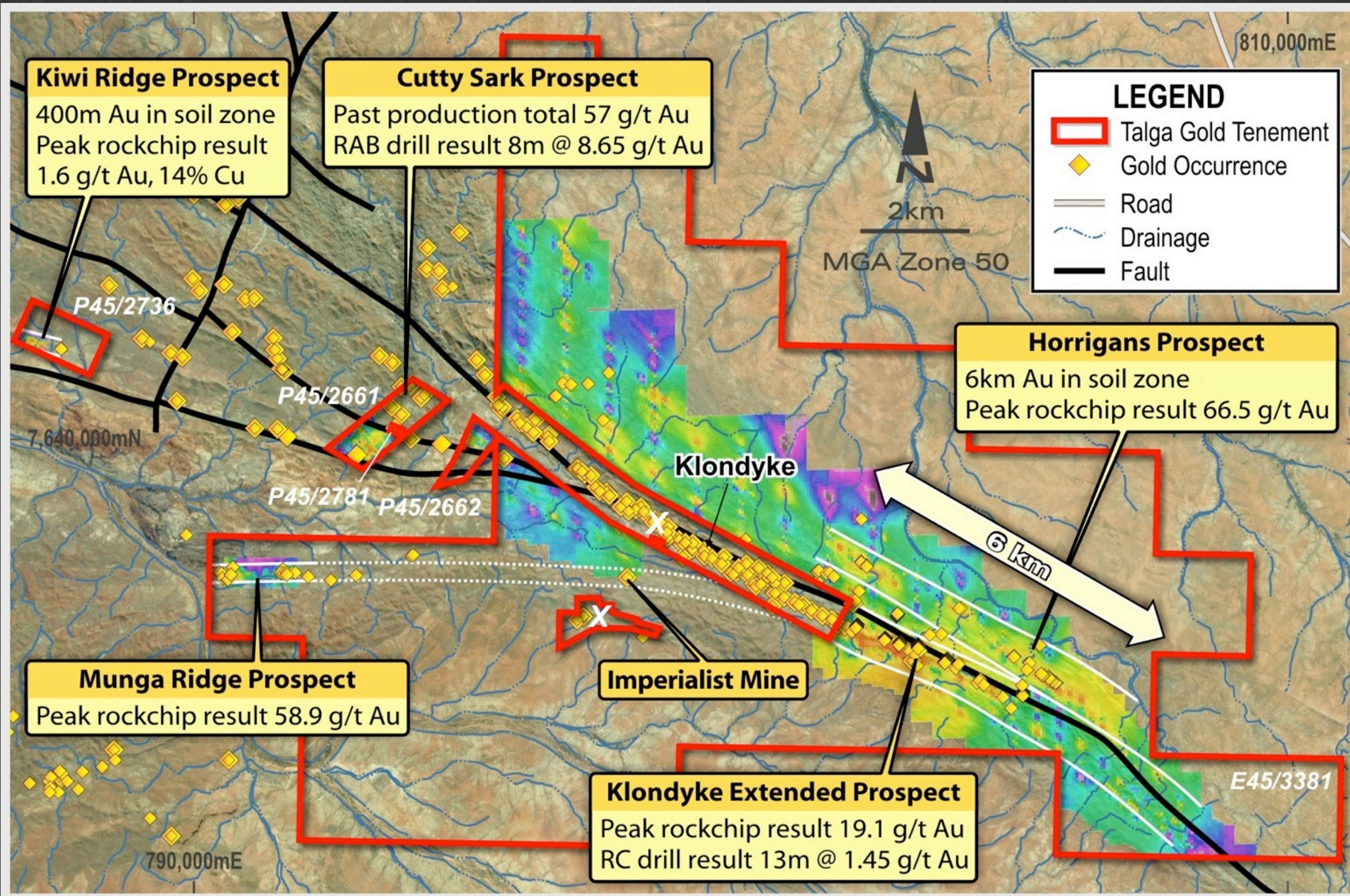
TALGA GOLD

TLG Tenement 100%

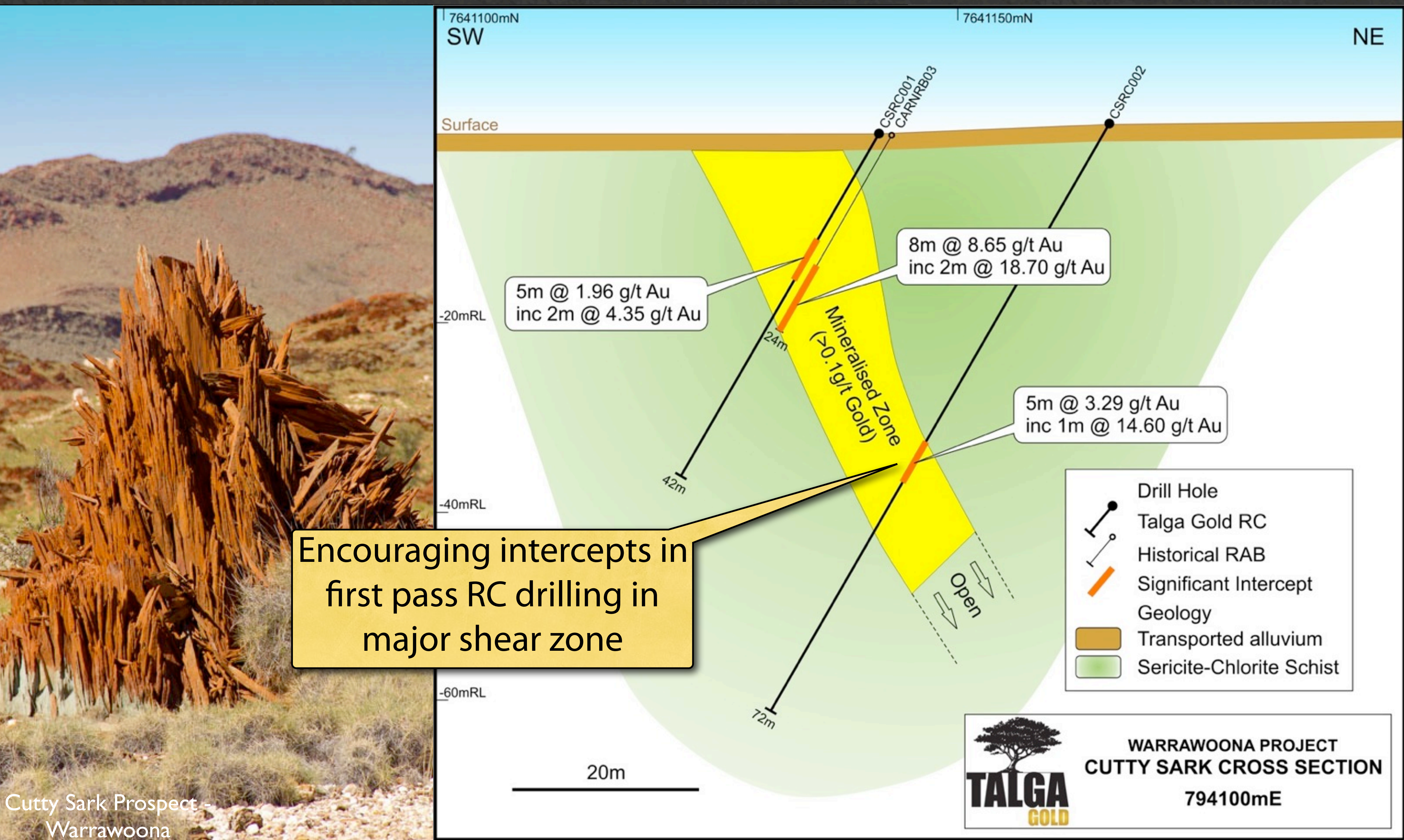
Area of 2010 Drilling



Warrawoona Project (TLG 100%)



Warrawoona Project - Cutty Sark Prospect

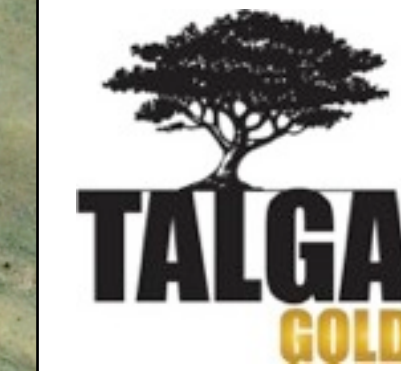


Encouraging intercepts in first pass RC drilling in major shear zone

Cutty Sark Prospect - Warrawoona



Warrawoona Project - Kiwi Ridge Prospect



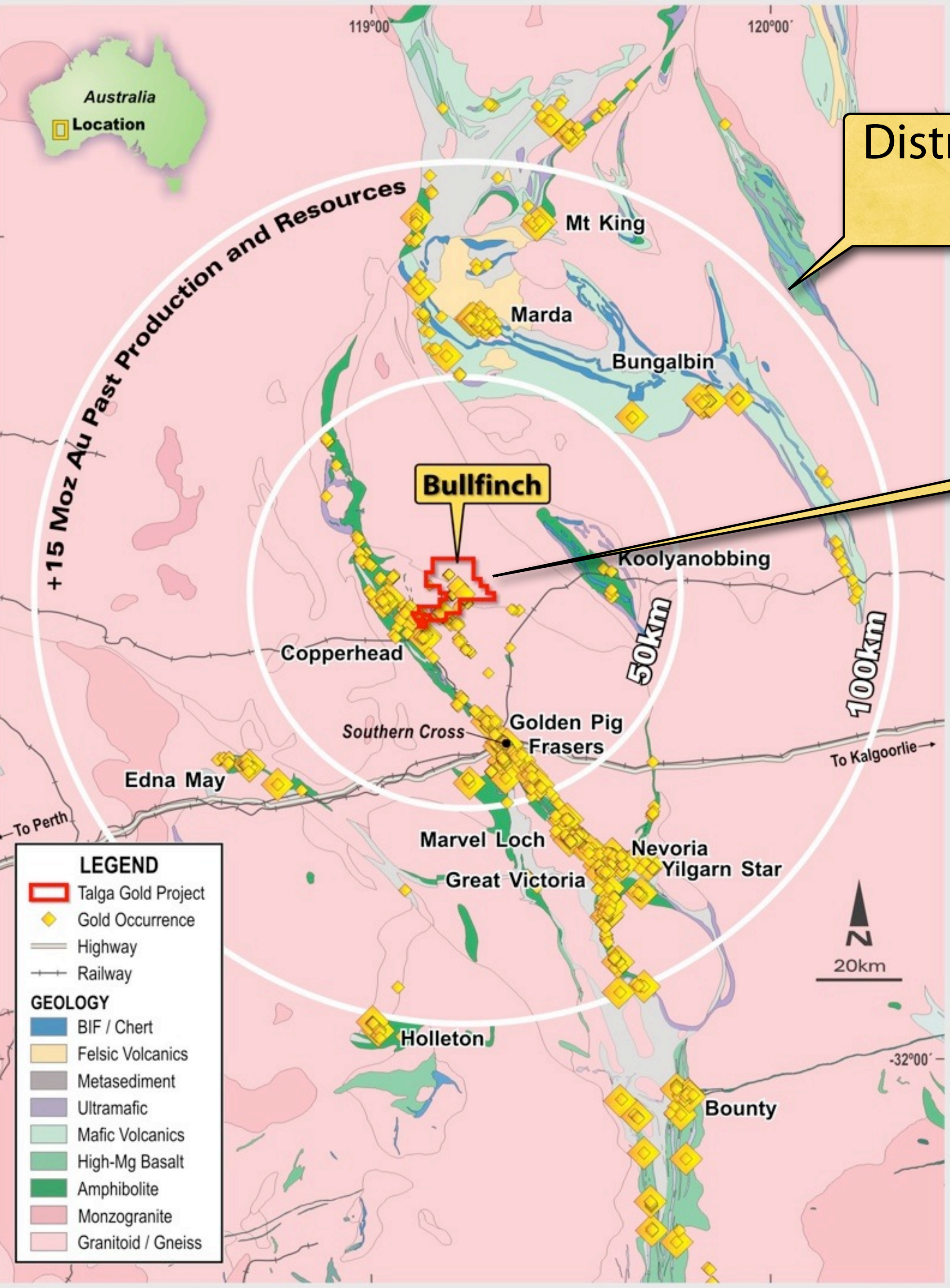
WARRAWOONA PROJECT
KIWI RIDGE PROSPECT
Gold in Soil Geochemistry Image

Gossans up to 14% Cu
for RC drilling Q2 2011

Strong gold target +500m strike
shedding high grade specimen gold
RC drilling sheduled Q2 2011



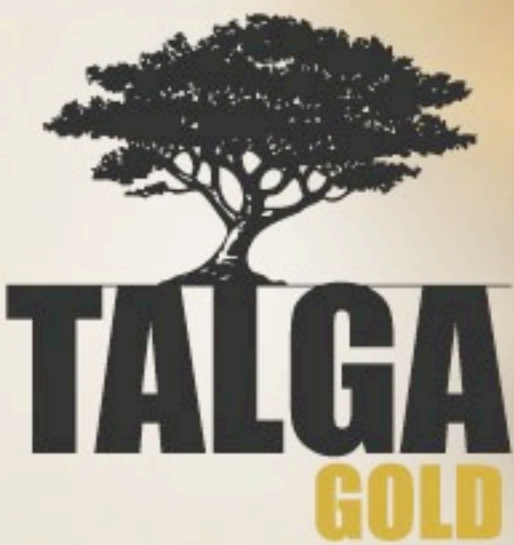
Bullfinch Project (TLG 100%)



District gold endowment to date
+15 Million Oz Au

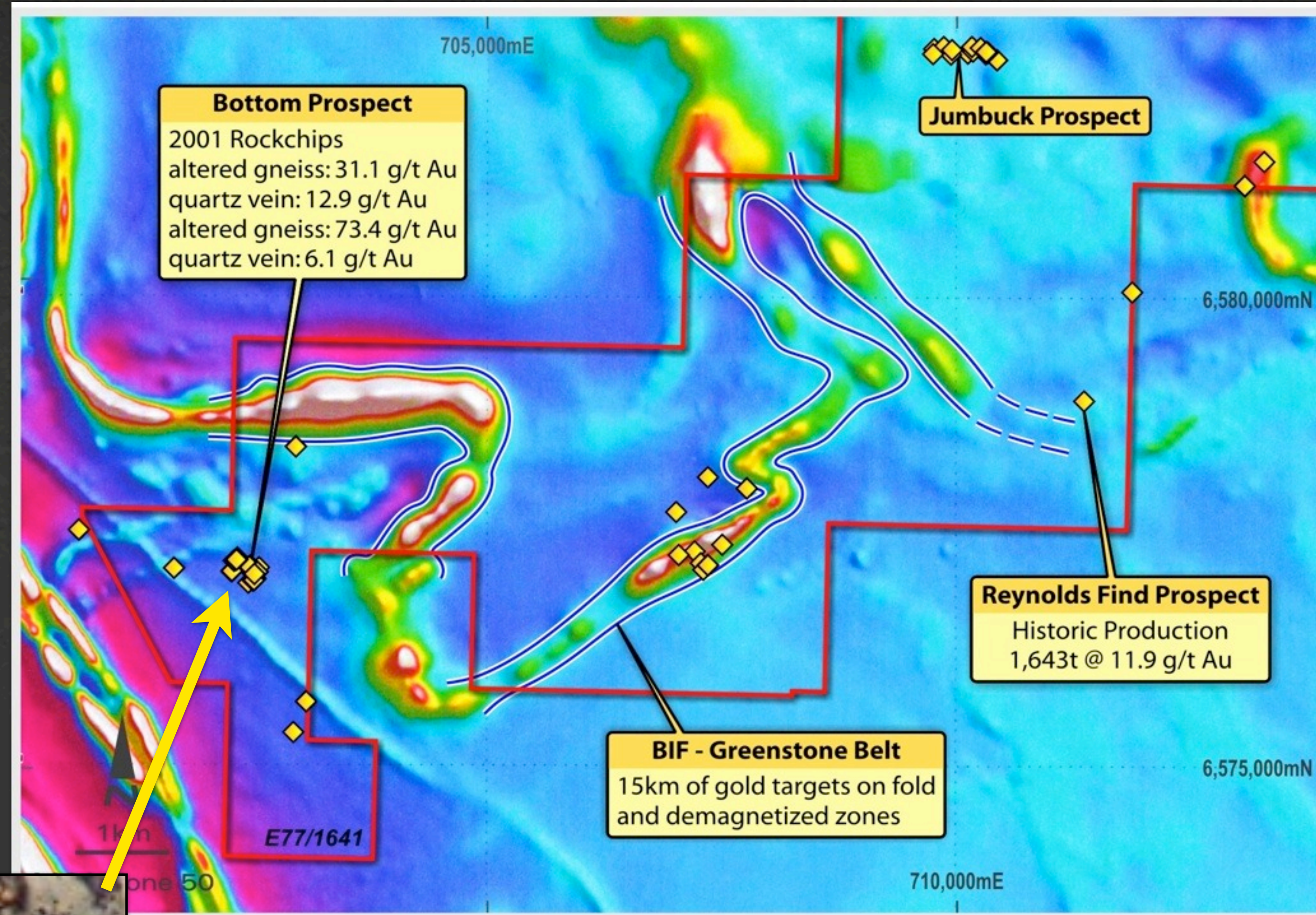
TLG holding 161km² in
prime high grade gold belt

- Adjacent to Copperhead Mine (+1.5M Oz Au) and Radio Mine (+70,000oz Au @ 38.5 g/t Au)
- Targeting Copperhead style deposits along 15km BIF-Greenstone belt plus emerging Au-Bi-Te models in gneissic hosts eg, Tropicana



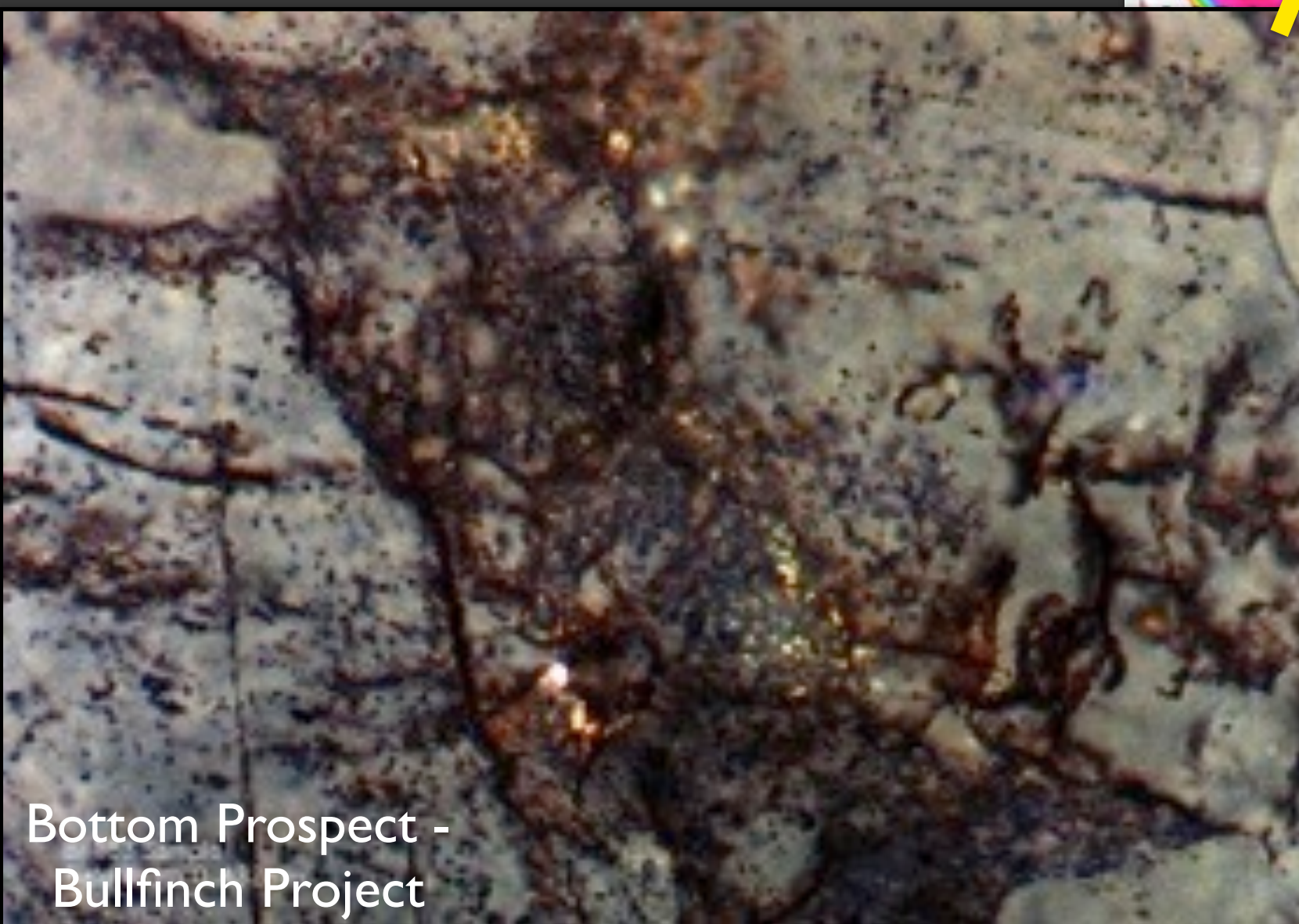
Bullfinch Targets

- 15km BIF -greenstone belt with folds and zones of magnetite destruction
- At the Bottom prospect gold-fertile altered gneiss and granitoids host the highest gold grades (see gold in feldspar below)



Aeromagnetic image of southwestern part of Bullfinch project showing Greenstone/BIF belt and gold occurrences with current prospects/targets

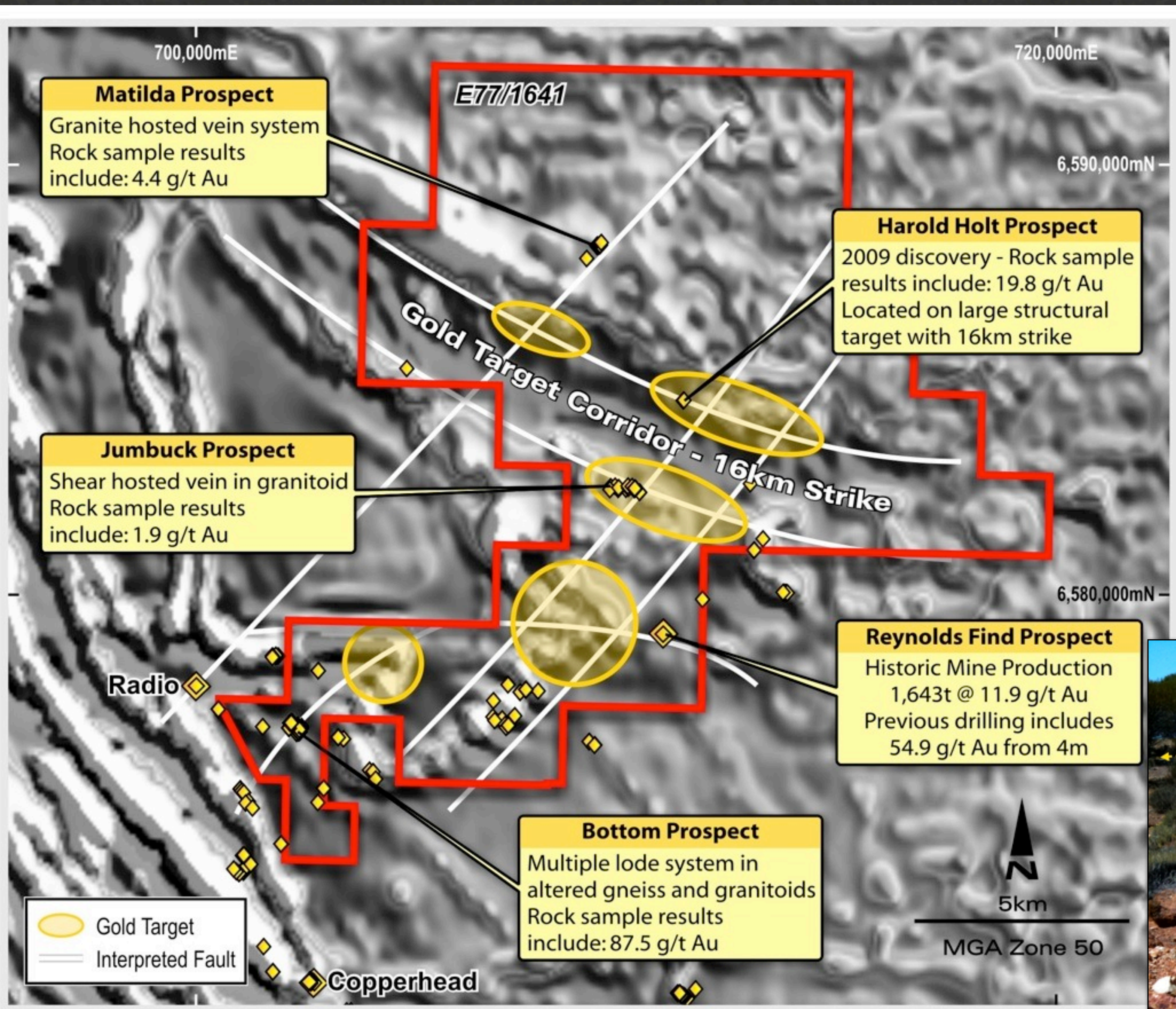
- Target is large high metamorphic grade (amphibolite-granulite facies) deposits ie. Edna May, Big Bell, Tropicana.



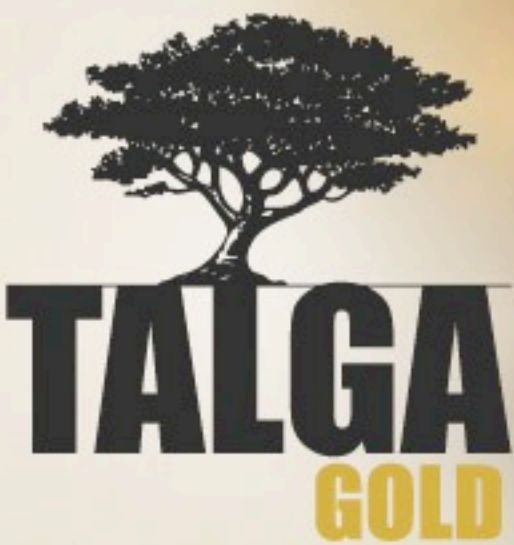
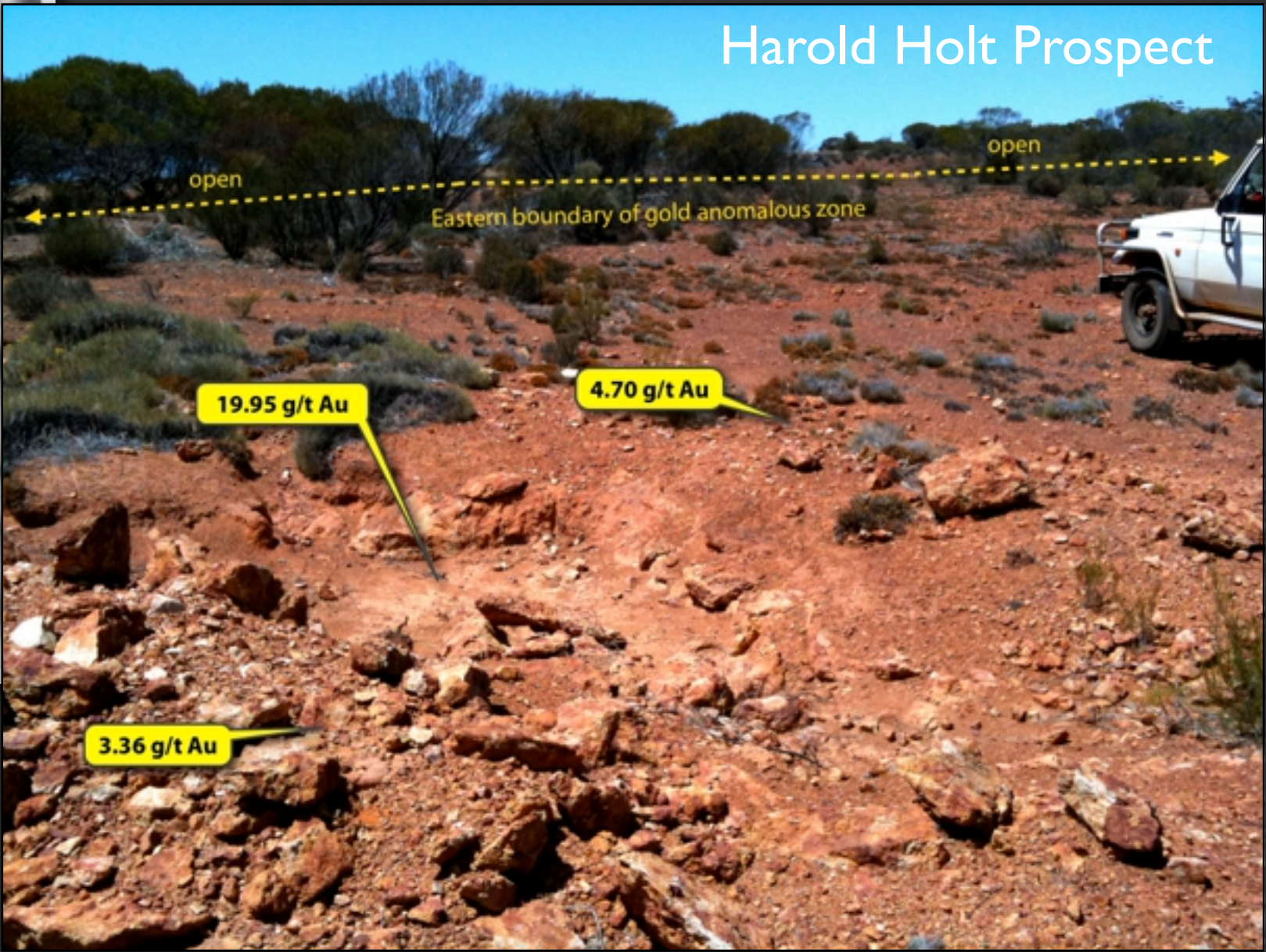
Bottom Prospect -
Bullfinch Project

Microphotograph of outcrop sample BF183 showing Feldspar + Au.
Field width 0.43mm

Bullfinch Targets



- High grades of Au-Bi-Te discovered outcropping at several new discoveries; Harold Holt and Jumbuck
- Excellent infrastructure and logistics for exploration and development.



2011 Plans & Newsflow

1st Qtr 2011

Diamond drilling Talga Talga
Geochem assay results out on Talga Talga
& Bullfinch

2nd Qtr 2011

Drilling 2500m RC at Talga Talga &
Kiwi Ridge
Permitting and start Aircore/RAB/RC
drill targets on Bullfinch

3rd Qtr 2011

Drilling RC at Bullfinch
RC drill Klondyke-Horrigans prospects
in Warrawoona Project
Assay results out Talga Talga & Kiwi
Ridge

4th Qtr 2011

Assay results out on Bullfinch &
Warrawoona
Fieldwork completed on Mosquito
Creek for drill targets



Talga Gold Investment Wrap

- 100% equity in outstanding Australian gold projects
 - no third party interests or clawbacks
- High grade near-surface gold zones intercepted in first pass drilling
 - Up to 73g/t Au within top 50m depth @ Talga Talga
- Granted key claims and most targets drill ready
- Excellent capital structure and management
 - Designed to 'fly', market cap \$12.5m @ 30c share price
- Gold Focus
 - high profit potential commodity with low Capex requirements compared to bulks, minimising dilution



Disclaimer & Forward Looking Statements

This presentation has been prepared by Talga Gold Limited (ACN 138 405 419) ("Issuer") for the sole purpose of providing an overview of its current prospects and proposed exploration and development strategy to recipients ("Recipient"). This presentation and its contents are provided to the Recipient in confidence and may not be reproduced or disclosed in whole or in part to any other person, without the written consent of the Issuer.

The presentation is based on information available to the Issuer as at the date of the presentation. The information contained in this presentation has not been verified by the Issuer nor has the Issuer conducted any due diligence in relation to that information. The presentation contains selected information and does not purport to be all inclusive or to contain all information that may be relevant to the Recipient. The Recipient acknowledges that circumstances may change and this presentation may become outdated as a result. The Issuer accepts no obligation to update or correct this presentation.

This document includes forward-looking statements. When used in this document, the words such as "could," "plan," "estimate," "expect," "intend," "may," "potential," "should," and similar expressions are forward-looking statements. Although the Issuer believes that the expectations reflected in these forward-looking statements are reasonable, such statements involve risks and uncertainties, and no assurance can be given that actual results will be consistent with these forward-looking statements.

No representation or warranty, express or implied, is made as to the fairness, accuracy, completeness or correctness of the information, opinions and conclusions contained in this presentation. To the maximum extent permitted by law, none of the Issuer, its directors, employees or agents, advisers, nor any other person accepts any liability for any loss arising from the use of this presentation or its contents or otherwise arising in connection with it, including, without limitation, any liability arising from fault or negligence on the part of the Issuer or its directors, employees or agents. Nothing in this Presentation is a promise or representation as to the future. Statements or assumptions in this presentation as to future matters may prove to be incorrect and differences may be material. The Issuer does not make any representation or warranty as to the accuracy of such statements or assumptions.

The information in this presentation does not take into account the investment objectives, financial situation and particular needs of any Recipient. The Recipient should not make an investment decision on the basis of this presentation alone and the Recipient should conduct its own independent investigation and assessment of the content of this presentation. Nothing in this presentation constitute financial product, investment, legal, tax or other advice. Nothing in this presentation should be construed as a solicitation to buy or sell any security or to engage or refrain from engaging in any dealing in any security.

Photographs, maps, charts, diagrams and schematic drawings appearing in this presentation are owned by and have been prepared by or commissioned by the Issuer, unless otherwise stated. Maps and diagrams used in the presentation are illustrative only and may not be drawn to scale. Unless otherwise stated, all data contained in charts, graphs and tables is based on information available at the date of this presentation. Gold specimens pictured are from Talga Gold 100% owned projects. By accepting this presentation the Recipient agrees to be bound by the foregoing statements.

Competent Persons Statement

The information in this announcement that relates to Exploration Results has been compiled by Mr Mark Thompson who is a Director of the Company. Mr Thompson is a member of the Australian Institute of Geoscientists and has sufficient experience which is relevant to the style of mineralisation and type of deposit under consideration and to the activity to which he is undertaking to qualify as a "Competent Person" as defined in the 2004 edition of the "Australasian Code for Reporting of Exploration Results, Mineral Resources and Ore Reserves". Mr Thompson consents to the inclusion of information in this announcement in the form and context in which it appears.





ASX:TLG



Talga Gold Ltd

First Floor 2 Richardson Street
West Perth WA 6005
Tel +61 8 9481 6667
Fax +61 8 9322 1935
www.talgagold.com