

## **Talga Presentation at Benchmark EV Fest - Graphite vs Silicon**

Battery anode company Talga Group Ltd (“**Talga**” or “**the Company**”)(**ASX:TLG**) is pleased to provide a copy of the presentation delivered by the Company’s Managing Director, Mark Thompson, during Benchmark Minerals EV Fest on Friday 4th June 2021 at 11pm AWST (4pm London).

The presentation is available on the Company’s website via the link below:

<http://www.talgagroup.com/irm/content/presentations.aspx?RID=301>

Authorised for release by:

**Dean Scarparolo**  
Company Secretary  
**Talga Group Ltd**  
T: +61 (0) 8 9481 6667

---

For further information please contact:

**Mark Thompson**  
Managing Director  
**Talga Group Ltd**  
T: +61 (0) 8 9481 6667

**Nikki Löf**  
Group Communications Manager  
**Talga Group Ltd**  
T: +61 (0) 8 9481 6667

### **About Talga**

Talga Group Ltd (ASX:TLG) is building a European battery anode and graphene additives supply chain, to offer advanced materials critical to its customers’ innovation and the shift towards a more sustainable world. Vertical integration, including ownership of several high-grade Swedish graphite projects, provides security of supply and creates long-lasting value for stakeholders.

Company website: [www.talgagroup.com](http://www.talgagroup.com)





# Graphite vs Silicon

## Complementary or Competing?

*Benchmark EV Fest 4 June 2021*

Mark Thompson – Managing Director  
Talga Group Ltd (ASX:TLG)



# Cautionary Statement and Disclaimer

Talga Group Ltd ACN 138 405 419 (the Company) is the issuer of this presentation.

## **Forward-looking statements**

This presentation contains forward-looking statements. Those forward-looking statements reflect views held only as at the date of this presentation. Any such statement is subject to inherent risks and uncertainties. Actual events or results may differ materially from the events or results expressed or implied in any forward-looking statement, and such deviations are both normal and to be expected. Recipients must make their own assessment about the likelihood of a matter, about which a forward-looking statement is made, occurring. The Company makes no representation about the likelihood of a matter, about which a forward-looking statement is made, occurring. The Company and its directors, employees, agents, advisers and consultants: give no representation or warranty to a recipient of this presentation as to the accuracy or completeness of the statements contained in this presentation or in relation to any other matter; and to the fullest extent permitted by law, disclaim responsibility for and have no liability to a recipient of this presentation for any error or omission in or for any statement in this presentation.

## **Reliance on presentation**

A recipient of this presentation must make their own assessment of the matters contained herein and rely on their own investigations and judgment in making an investment in the Company. This presentation does not purport to contain all of the information required to make an informed decision whether to invest in the Company. Specifically, this presentation does not purport to contain all the information that investors and their professional advisers would reasonably require to make an informed assessment of the Company's assets and liabilities, financial position and performance, profits, losses and prospects.

## **Not a recommendation or financial advice**

The information in this presentation is not a recommendation to subscribe for securities in the Company and does not constitute financial advice. Any person who intends to subscribe for securities must conduct their own investigations, assessment and analysis of the Company and its operations and prospects and must base their investment decision solely on those investigations and that assessment and analysis. Prospective investors should consult their own legal, accounting and financial advisers about an investment in the Company.

## **Photographs and images**

Photographs, maps, charts, diagrams and schematic drawings in this presentation are owned by and have been prepared or commissioned by the Company, unless otherwise stated. Maps and diagrams used are illustrative only and may not be drawn to scale. Unless stated otherwise, all data contained in charts, graphs and tables is based on information available at the date of this presentation.

# Talga Group

Becoming a significant and vertically integrated producer of lithium-ion battery anode products and technologies

Talga is developing a fully integrated graphite anode production facility in Sweden running on 100% renewable electricity, to produce ultra-low emission material for greener Li-ion batteries

Ownership over industry-leading natural graphite deposits for processing into anode products and graphene provides complete control over supply and captures more margins

Whilst graphite anode remains the dominant choice the market demand shows an increased interest in silicon anode products.

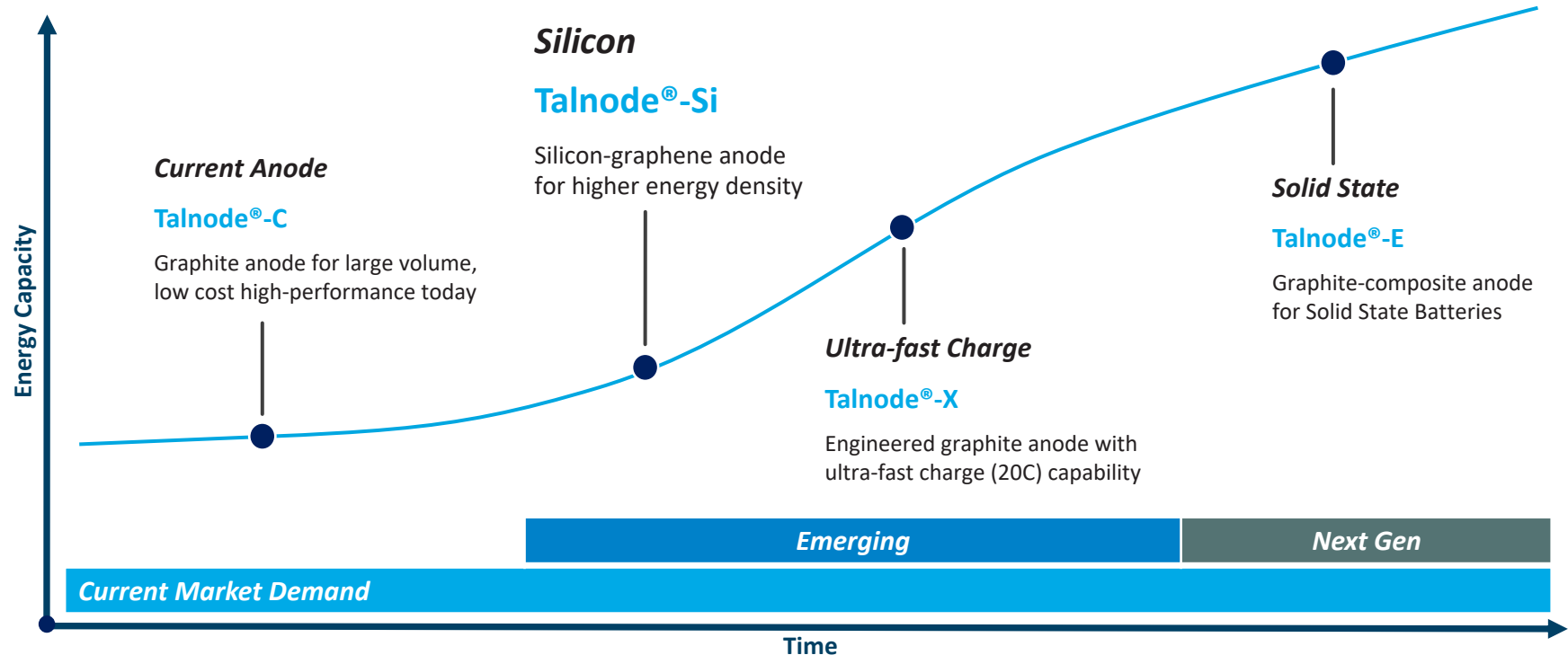
Talga has designed and developed a silicon composite anode, Talnode<sup>®</sup>-Si, utilising graphite-graphene to address the commercial and technical issues, and complement use of silicon.





# Talga Anode Products

Talga graphite battery anode range designed for growth across major Li-ion developments



# Silicon Potential in Li-ion Anode

There is interest in higher energy capacity Li-ion batteries

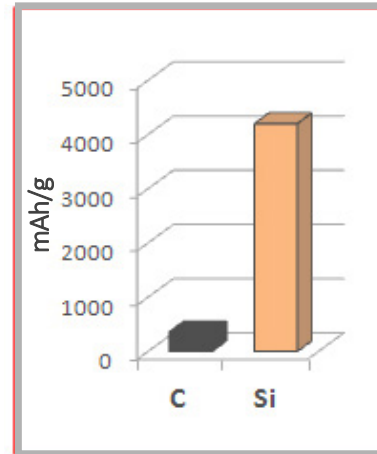
Silicon as a pure material is *theoretically* capable of >10x energy capacity of graphite in Li-ion batteries, *by weight*

**Higher energy capacity can translate to longer range** of electric vehicles or less weight (smaller batteries for same range)

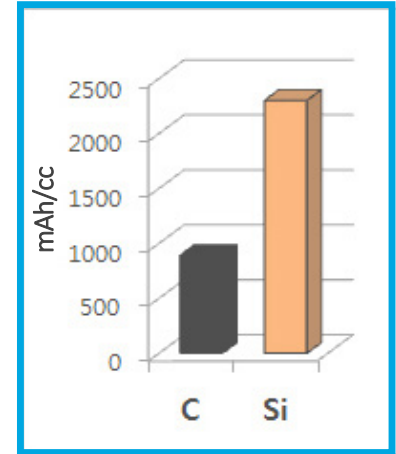
Therefore, silicon anodes seem great! **But they have some big issues to overcome in practical and commercial use**

Today only minor amounts are used (as an additive into graphite-based anodes) but there is much work underway

Gravimetric Energy Density



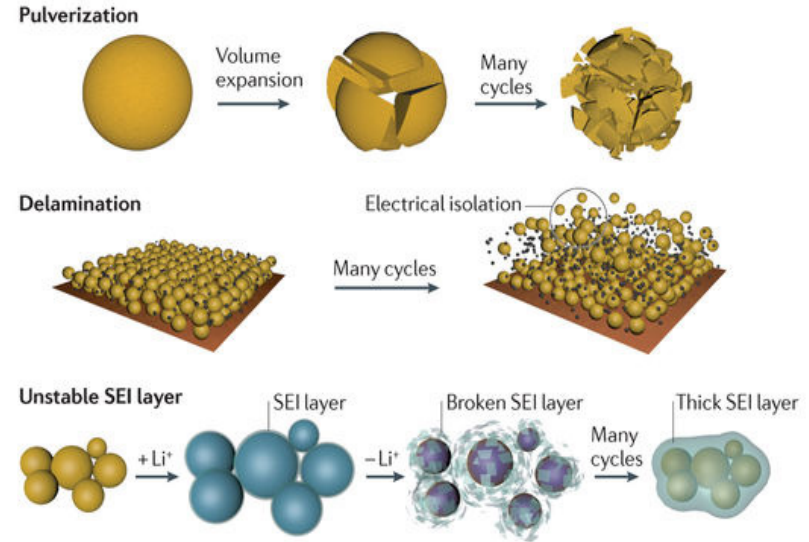
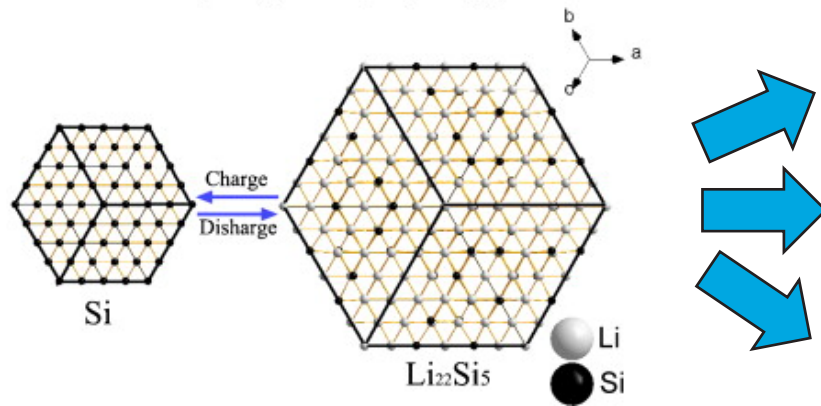
Volumetric Energy Density



# The Many Challenges of Silicon Anodes

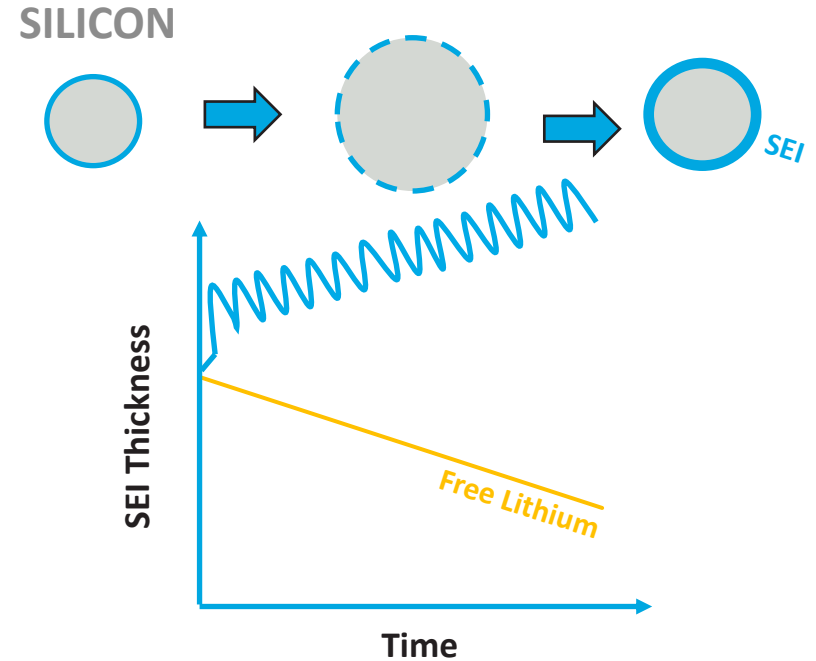
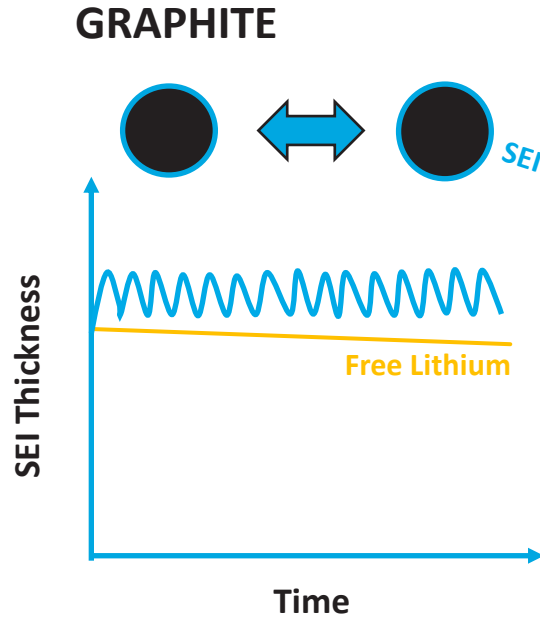
Silicon anodes have profound issues to overcome in practical use

When charged/discharged Silicon **changes volume by 300%** (compared to graphite  $\sim 10\%$ ) causing a wide range of physio-chemical issues, including repeated cracking of the anode particles



# Silicon 'The Lithium Robber'

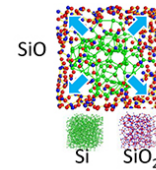
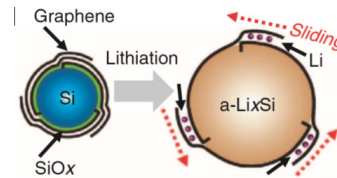
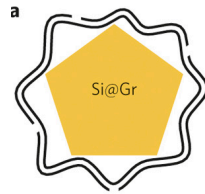
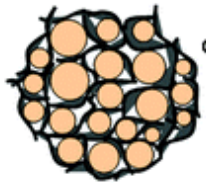
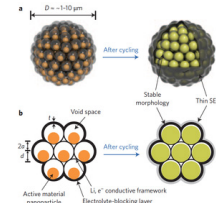
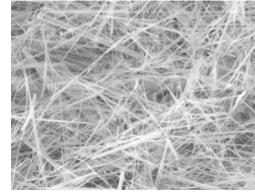
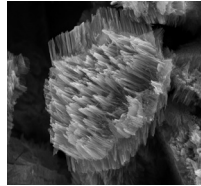
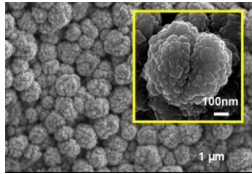
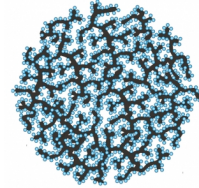
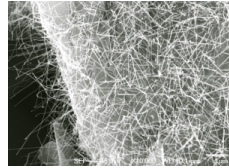
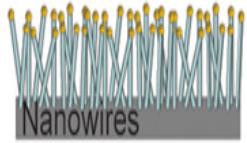
The repeated changes in volume keeps cracking the solid electrolyte interface (SEI), continuously 'robbing' lithium from cathode and electrolyte to reform it, decreasing lithiation kinetics



NOTE: Diagrams are schematic only/not to scale

# Possible Solutions

Wide range of silicon anode morphologies and composites developed but higher silicon content products tend to be most challenged by cost and scalable production outlook

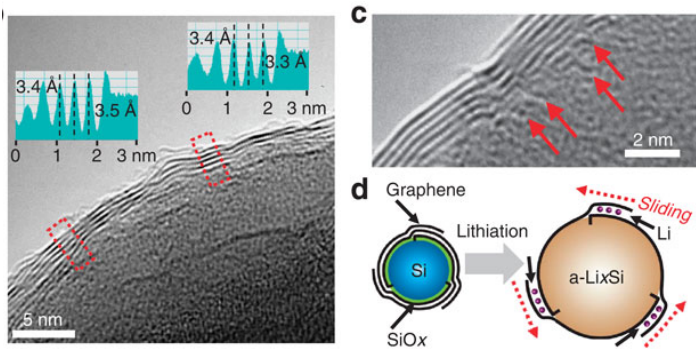




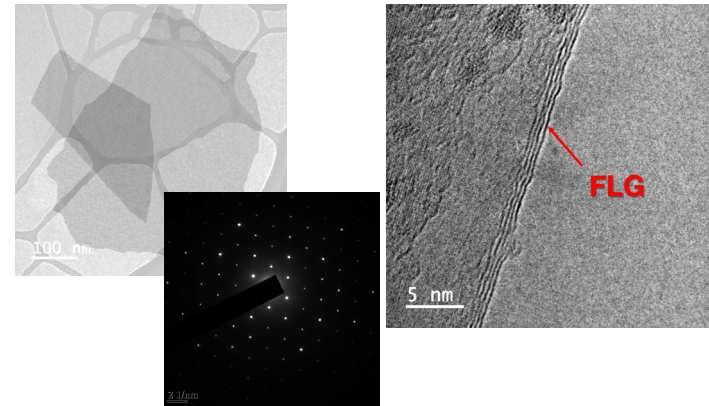
# Graphene Can Complement Silicon

One approach is to use graphene to help control charge kinetics and SEI during volume change

## SAMSUNG GRAPHENE COATED SILICON



## TALGA GRAPHENE



# Talga Approach to Silicon

## Design strategy for silicon composite anode

Silicon anode design strategy **starting 2018** under UK Government funded Talga-led program with Johnson Matthey, the University of Cambridge and manufacturing research group, TWI

Targeted significant but incremental gains in energy density sought by **customers battery roadmaps rather than theoretical maximums**

Particle design enables a range of loadings in existing commercial anode blends **without re-tooling, avoid pre-lithiation and use existing commercial electrolytes**

Particle design to enable high-capacity silicon loading but **retain focus on high volume production process** and off-the-shelf equipment

*Talga Silicon Source and Graphite Ore  
Sample from Vittangi Project*

# Talnode<sup>®</sup>-Si a practical approach

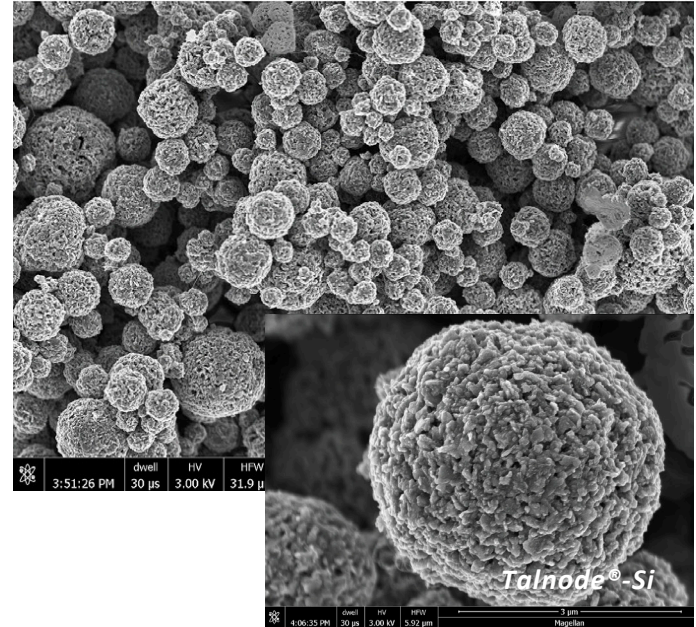
Talnode<sup>®</sup>-Si is a graphene silicon composite electrode additive with ~30-50%Wt silicon for 'drop-in' blending with commercial graphite anodes

Talga's graphene additives and production technology enables silicon-loaded anodes to stabilise

Graphene works in various modes including protective coatings and nano-structures to control pulverization issues, retain kinetics and moderate SEI formation

First cycle efficiency up to 91% dependent on silicon loading. Has good cycle life (**using commercial electrolytes**) and coulombic efficiency, with lower production costs and large scale manufacture capability

Uses lower-cost metallurgical silicon for large volume production





# C + Si = Complementing

Talnode<sup>®</sup>-Si activities and next steps

Scaled up sample production facilities in UK and Germany

Intellectual Property lodged and more underway

Commercial samples in multitude of testing programs with battery makers and auto companies - Large scale trials for high-performance auto brand underway

Positive feasibility study completed for mass production under UK Government Automotive Transformation Fund

Exploration of advanced commercial partners underway



# Partnerships for a greener future

Working with respected battery customers and technology & development partners



MITSUI & CO., LTD.



Innovate UK



Department for  
Business, Energy  
& Industrial Strategy



BENTLEY



BILLERUDKORSNÄS



BOSCH



GRAPHENE FLAGSHIP



SWERIM

SveMin



# Corporate Overview

## ASX:TLG PERFORMANCE (12 MONTHS)



## STOCKMARKET CODES

Primary listing in Australia on the ASX (TLG)  
with OTC trading in USA (TLGRF) and Germany (TGX)

## CAPITAL STRUCTURE

ASX Listing Code:	TLG
Market Capitalisation:	\$497M
Listed Shares:	303.2M
Unlisted Options:	12.9M <sup>(1)</sup>
Cash as at 31 March 2021:	\$58.4M

## MAJOR SHAREHOLDERS

Mark Thompson – MD	4.7%
Kinetic Investment Partners	4.5%
UBS Securities Australia	2.9%
UBS AG	2.4%
Yandal Investment Pty Ltd	1.6%

**Total number of shareholders** **10,472**

NOTE: MARKET CAPITALISATION AS AT 1 JUNE 2021, SHAREHOLDER REGISTER AS AT 28 APRIL 2021. <sup>(1)</sup> UNLISTED OPTIONS INCLUDE PERFORMANCE RIGHTS SUBJECT TO VESTING CONDITIONS.

## TALGA GROUP LTD

ASX Code: TLG

Head Office: 1st Floor, 2 Richardson Street  
West Perth WA 6005, Australia

Phone: +61 8 9481 6667

Email: [info@talgagroup.com](mailto:info@talgagroup.com)

Website: [www.talgagroup.com](http://www.talgagroup.com)



### GLOBAL OPERATIONS

**Talga Sweden:** Storgatan 7, 972 38 Luleå, Sweden

**Talga Sweden:** Vänortvägen 2, 981 32 Kiruna, Sweden

**Talga UK:** The Bradfield Centre, 184 Cambridge Science Park, Cambridge CB4 0FQ, UK

**Talga Germany:** Prof.-Hermann-Klare-Str. 25, 07407 Rudolstadt, Germany

**Talga Japan:** Takatsuki, 569-1046, Osaka, Japan

