



Talga Gold Ltd

Paydirt Gold Conference Presentation
31 March 2011

Talga Gold Ltd Corporate Snapshot

- Company listed on ASX July 2010 ASX:TLG
Raised \$5m @ 20c
- 40.3m shares
1.1m options
- 100% equity in all gold projects
- Top 20 own 50% of TLG
Major shareholders:
Directors (Thompson) 23%
Vendor 5%
Institution 5%
- Market cap \$14m @ last price 34c



Designed for Investor Performance

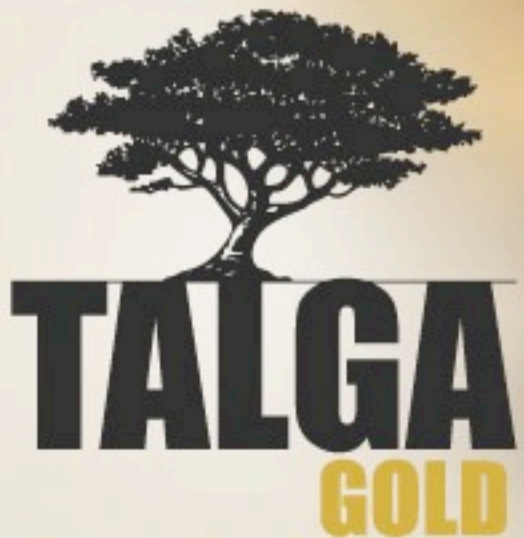
<i>Capital Structure</i>	<i>TLG</i>
Pre-IPO Shares including Vends	12,150,000
Seed Capital @ 10c	3,200,000
IPO Shares \$5m @ 20c	25,000,000
Total Shares	40,350,000
Directors (unlisted) Options	1,100,000
Fully diluted Market Cap @ 34c	\$14m
<i>Shareholders</i>	
Public IPO	62%
Directors and Management	25%
Seed Capitalists & Vendor	13%

Listed 9 July 2010
100% equity in
gold projects

Top 20 own 50%

20c; exp Dec 2012

Primed for
high growth



Board and Management



Sean Neary

B.Ec, M.Law (Tax), CPA

Chairman &
Non-Executive Director



Mark Thompson

MAIG, MSEG

Managing Director



Piers Lewis

B.Comm, CA

Company Secretary &
Non-Executive Director

Senior Team

Darren Griggs

Senior Exploration Geologist

Kane Freeman

Field Manager

Marguerite Mee

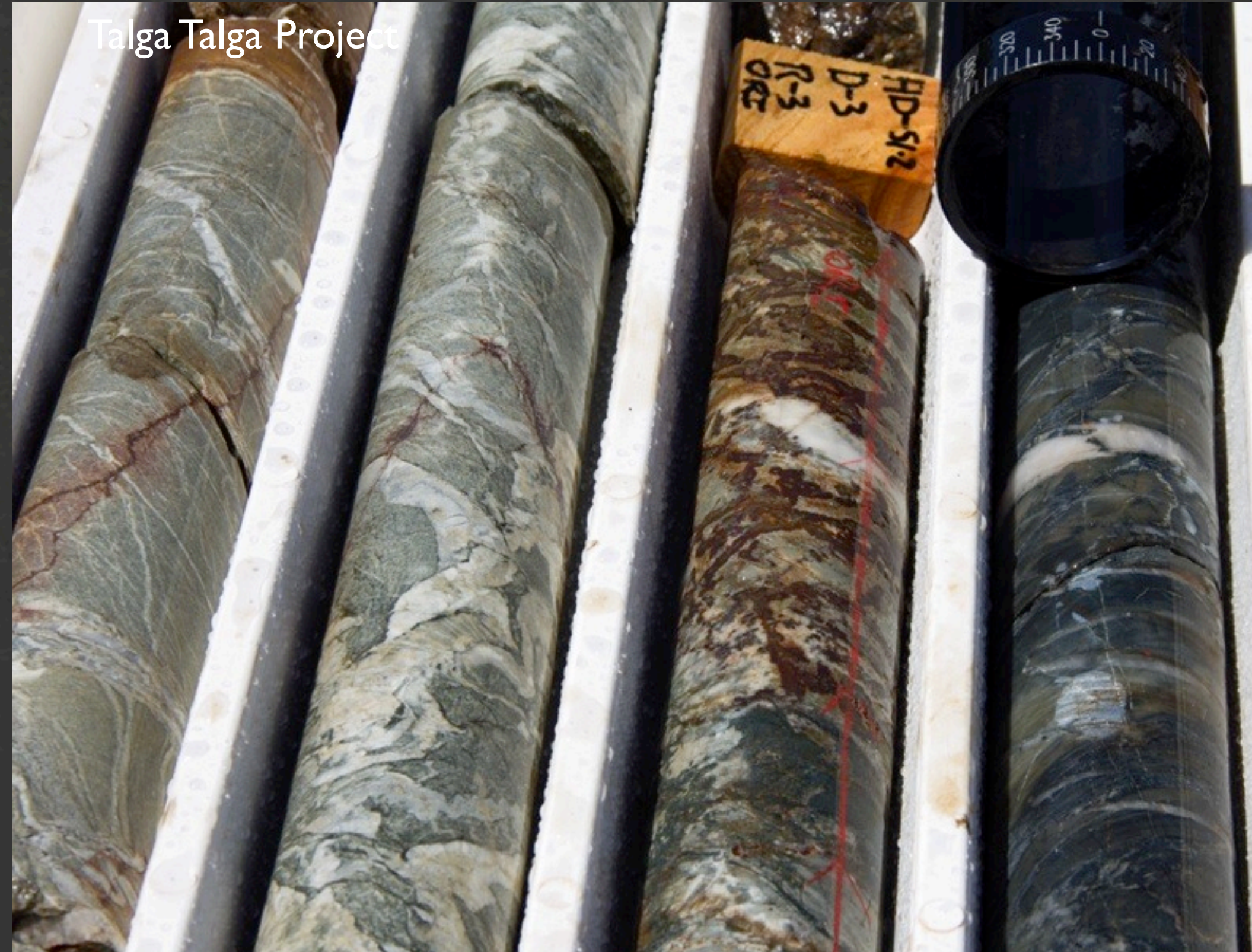
Office Manager



Warrawoona Project



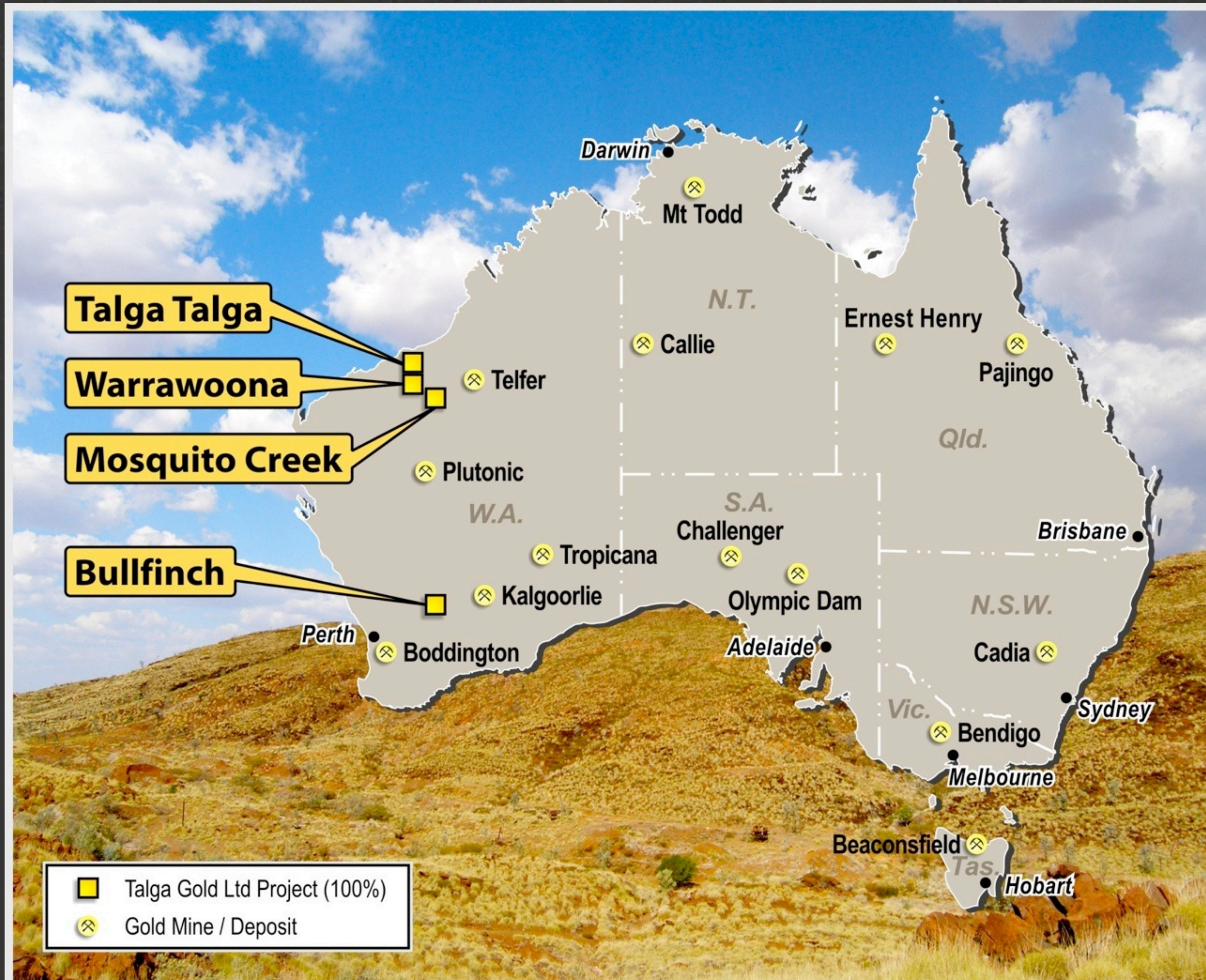
Active Explorer - Exploration since Listing



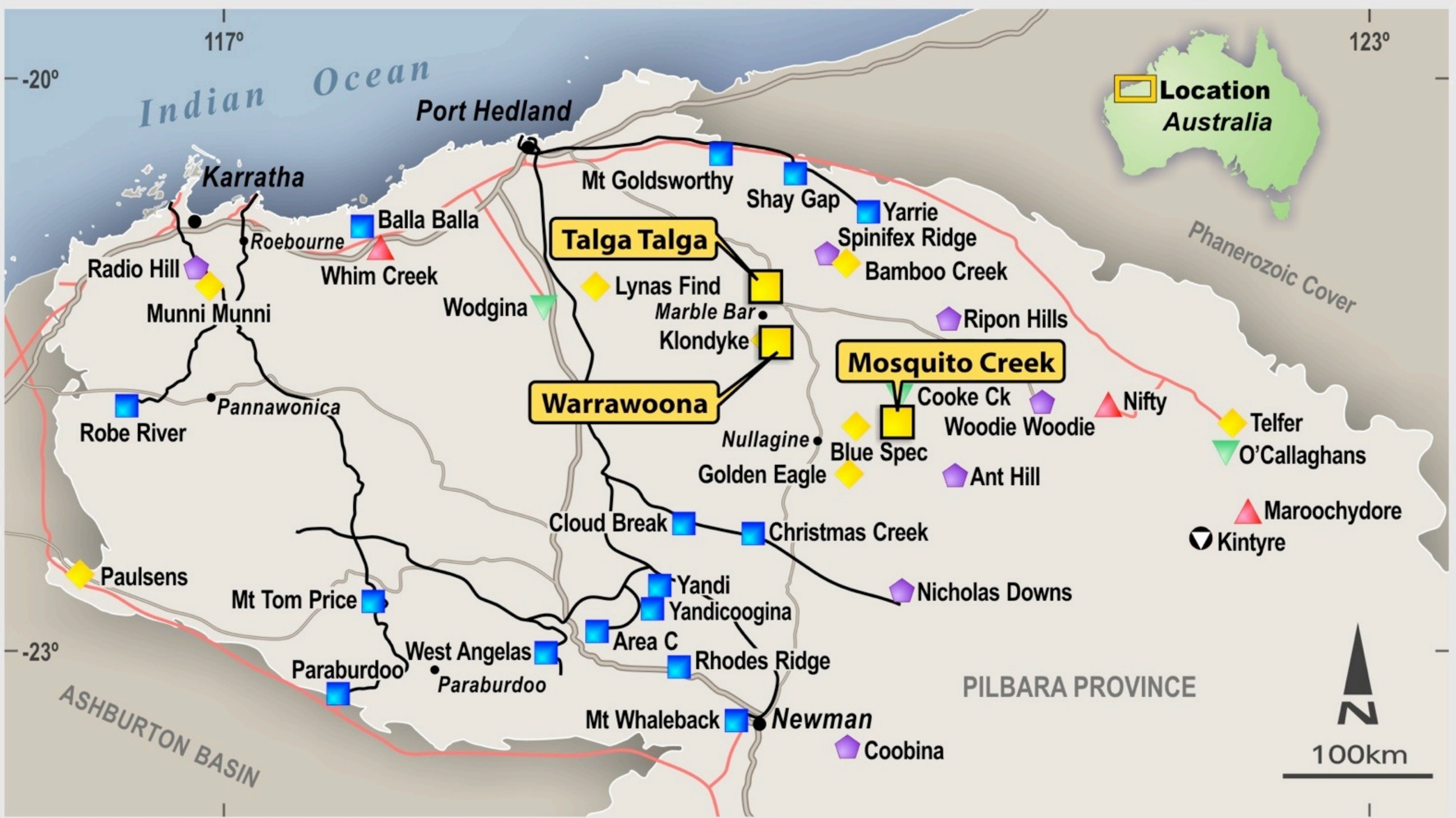
- Drilled 41 RC holes totalling 2,123 metres at Talga Talga and Warrawoona Projects
- Drilled eight Diamond holes oriented core at McPhees of Talga Talga project
- Sampled 6 grids with 1,688 geochemical samples across three projects



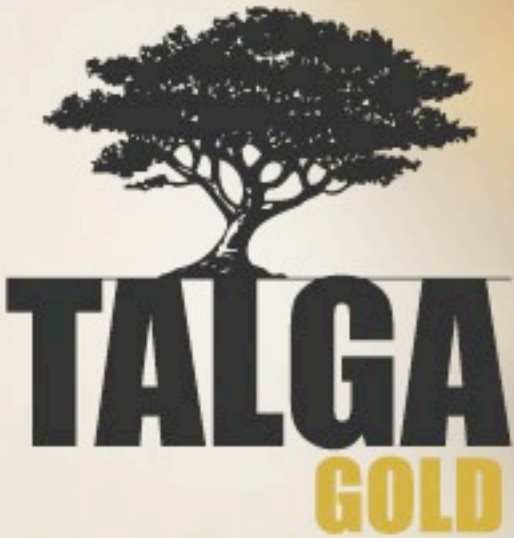
Talga Gold Project Locations



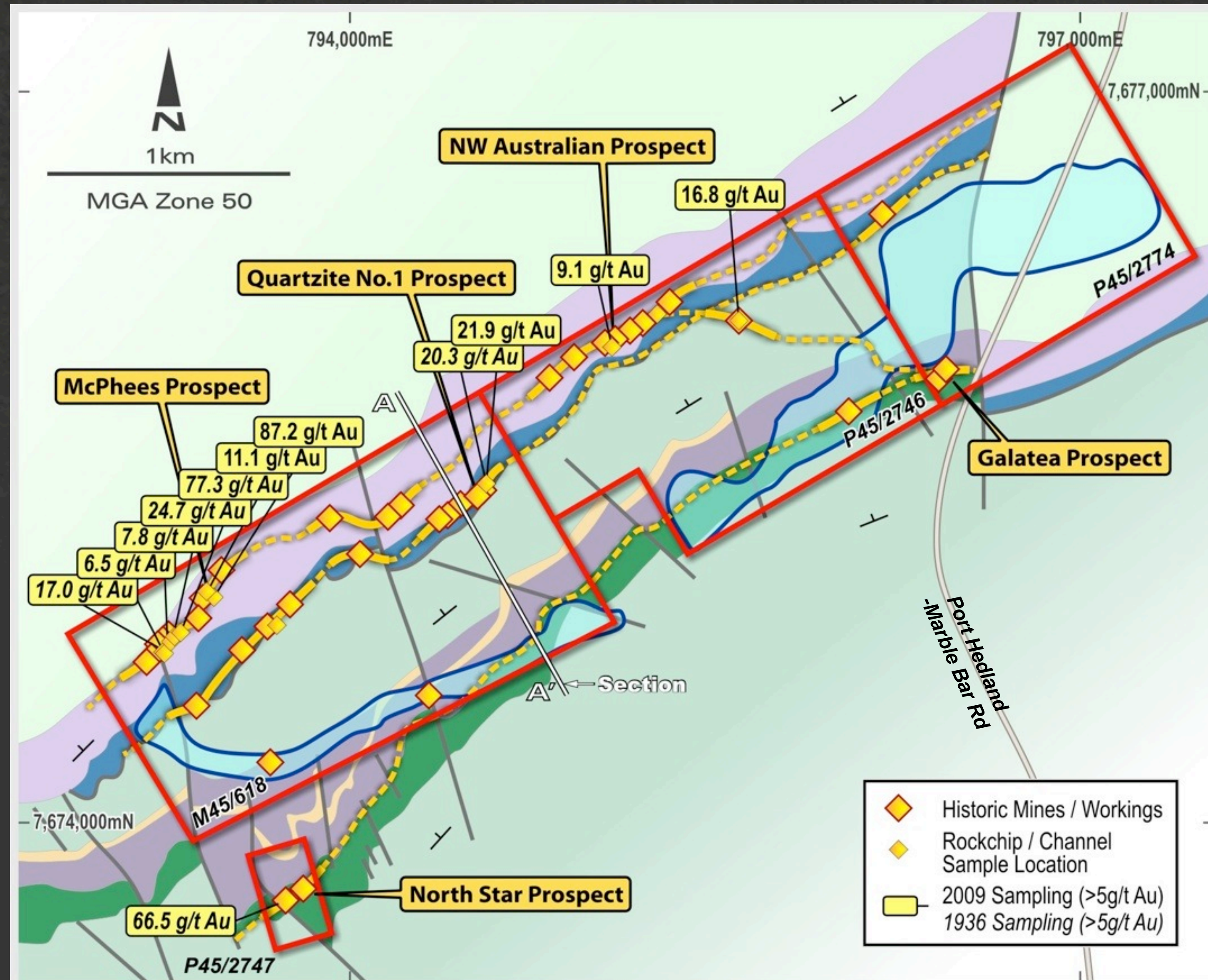
Pilbara Region - Rich Mineral Endowment



Infrastructure			Major Mine / Deposit		
Talga Gold Project	Highway	Railway	Iron Deposit	Precious Metal	Specialty Metal
Town	Road	Gas Pipeline	Base Metal	Steel Alloy Metal	Energy Metal

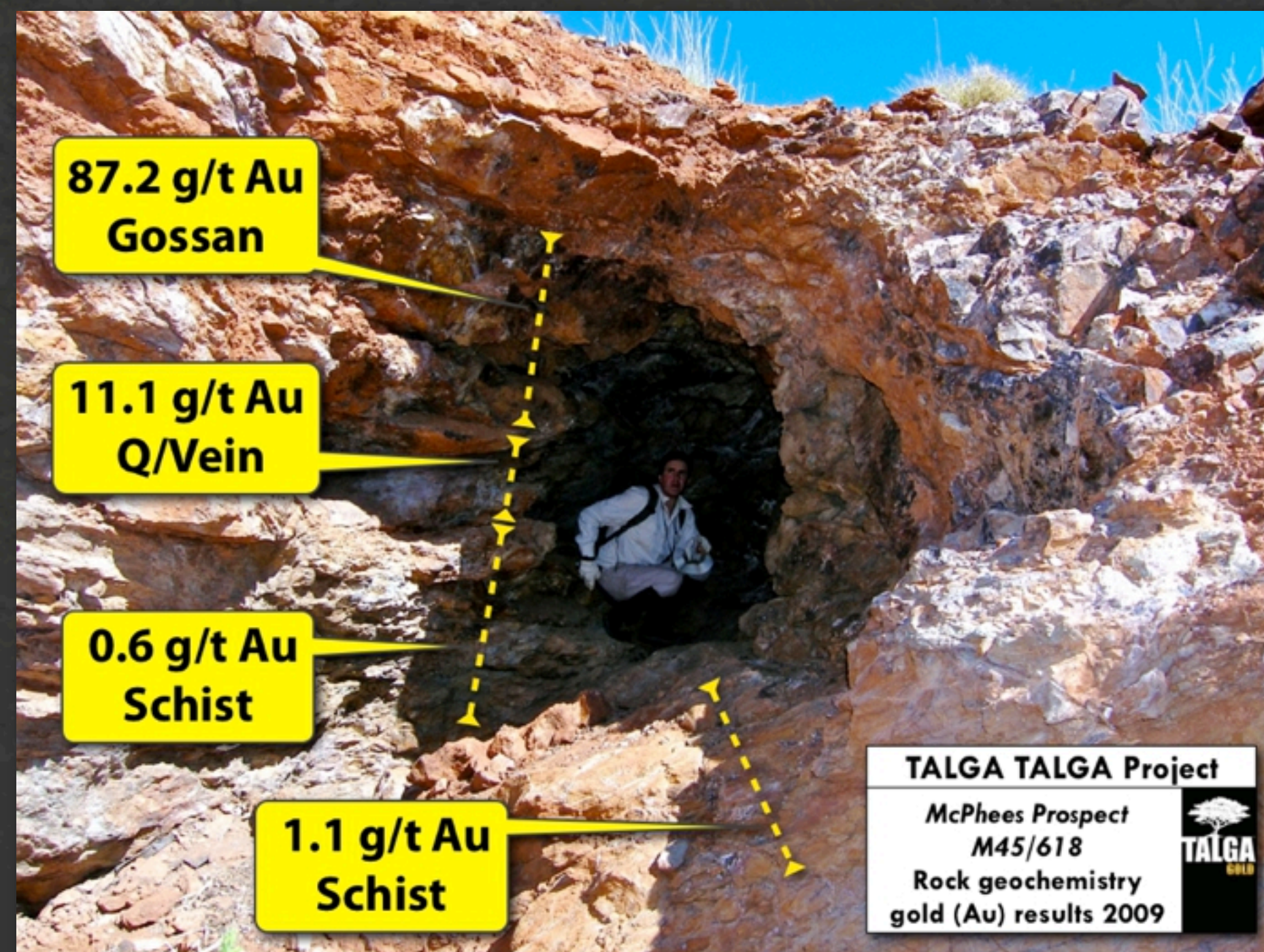


Talga Talga Project (TLG 100%)



- Abundant near-surface high-grade gold zones in rock sampling & untested historic workings
- Three parallel gold 'lines' over 5 km strike
- Advanced Tenure & Logistics; Granted Mining Lease over 2km strike and sealed road access to Port Hedland.

Talga Talga First Prospects



McPhees Prospect

- Gold hosted in Qtz-Sulph-Carb veined and sheared Ultramafic
- High grade rockchip channel results - up to 87.2 g/t Au
- Never previously drill tested for gold



Quartzite Prospect

- Chert-hosted lodes up to 22 g/t Au in TLG sampling
- Repeatable assays to historic work
- Never previously drill tested

Talga Talga Geology - Shallow dipping

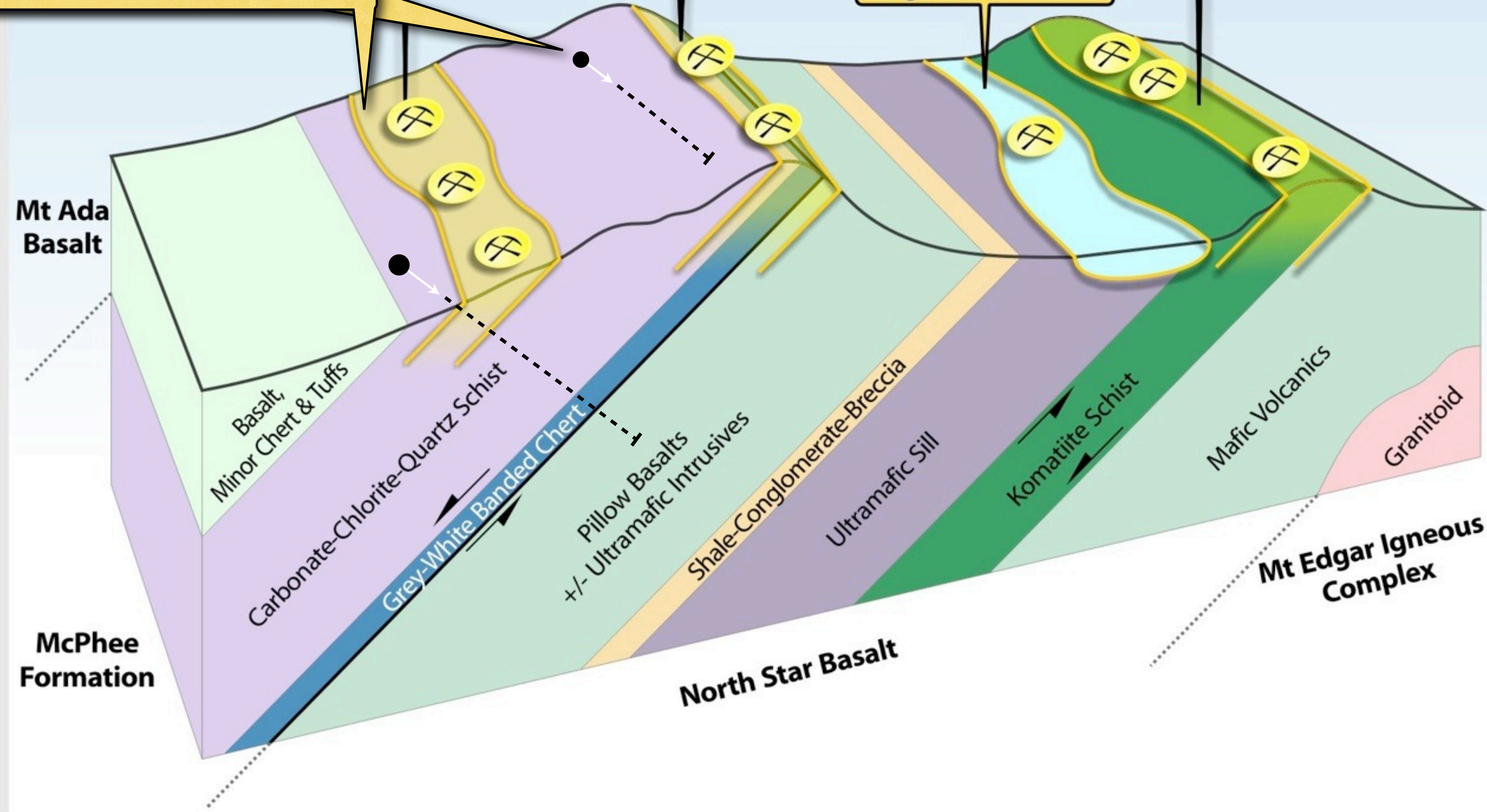
41 RC drill holes Oct 2010
8 diamond drill holes Mar 2011

McPhees Gold Zone
65.6g/t average Historic Production
360m strike surface sampling ave. 23.8g/t Au
2km strike gold zone in granted Mining Lease

Quartzite - BIF Gold Zone
4.7km strike gold zone - never drilled
includes 21.9g/t Au lodes at surface

North Star Gold Zone
+ 4km shear zone in komatiite-ultramafic
Channel sampling of historic workings
includes 66.5g/t Au from 16m depth

Talga Gold Placers



Selected Drilling Highlights - Inaugural RC Program

Hole Id	Easting	Northing	EOH	Azi	Dip	From (m)	To (m)	Width	Grade g/t Au
Talga Talga Project - McPhees Prospect									
TTRC003	793251	7674826	42	125	-60	32	35	3	24.82
		<i>including</i>				32	33	1	66.90
TTRC006	793256	7674786	32	0	-90	23	25	2	3.82
TTRC010	793421	7674929	26	0	-90	20	23	3	2.04
TTRC017	794462	7675480	92	185	-60	36	41	5	1.14
TTRC018	794475	7675487	94	130	-60	51	53	2	2.44
TTRC023	793223	7674747	30	125	-60	17	18	1	13.75
TTRC024	793223	7674749	36	0	-90	21	24	3	1.41
TTRC029	793362	7674983	114	125	-60	54	61	7	14.40
		<i>including</i>				54	55	1	73.50
Warrawoona Project - Cutty Sark Prospect									
CSRC001	794095	7641142	42	205	-60	13	18	5	1.96
		<i>including</i>				13	15	2	4.35
CSRC002	794108	7641163	72	205	-60	39	50	11	1.56
		<i>including</i>				39	44	5	3.29
		<i>includes</i>				40	41	1	14.60

high grade at shallow depth

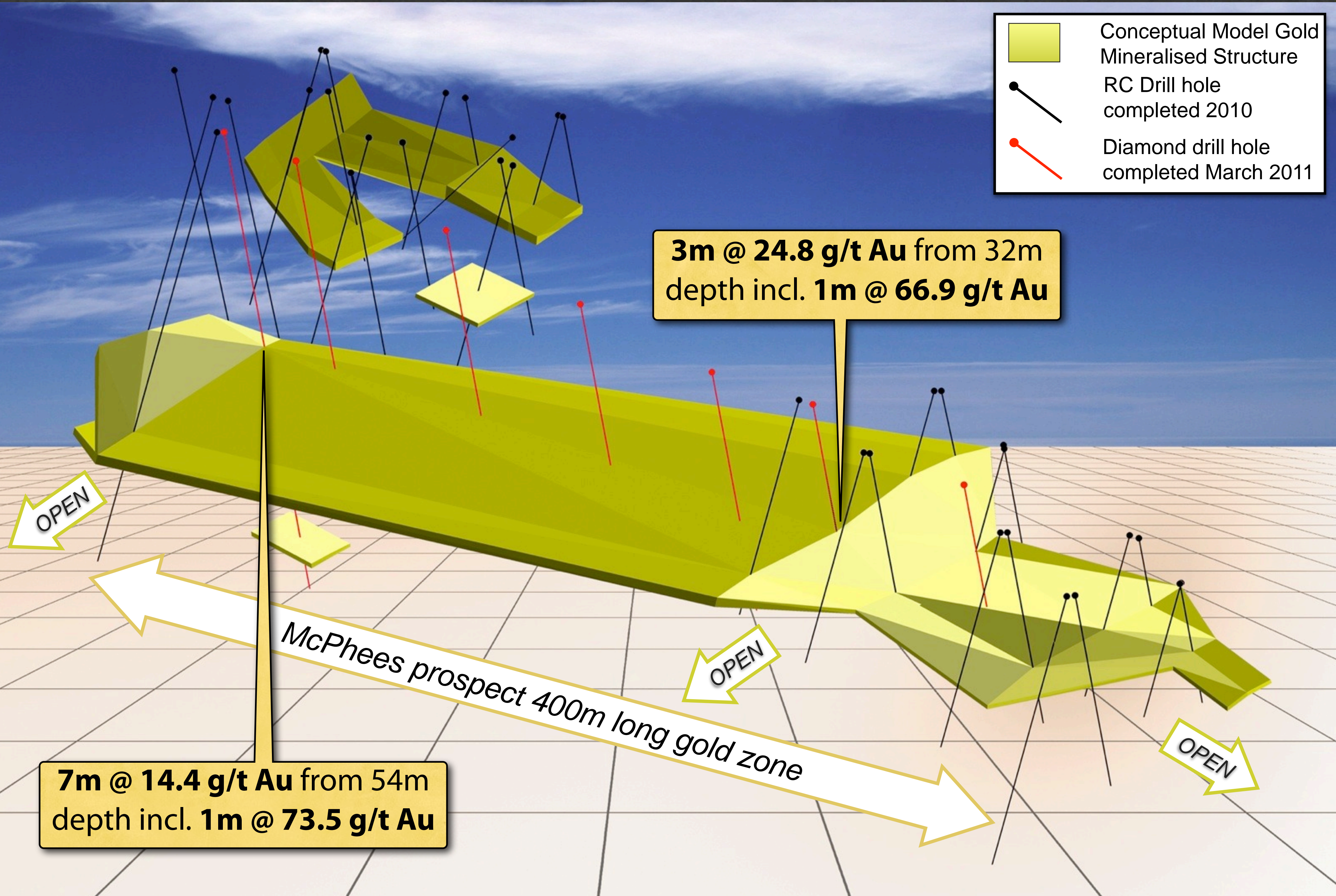
high grade at shallow depth

250m along strike from TTRC003

- All drill hole samples riffle-split 1m intervals and assayed as 1m intervals by ALS-Chemex in Perth, Western Australia.
- All samples assayed by Aqua Regia methods and >1.0 g/t Au grade samples assayed by 50 gram ore-grade Fire Assay method.
- Mineralised intercepts are calculated using >0.1 g/t Au cutoff and selected as significant where total intersection >1.0g/t Au.
- Drilling assay results all announced previously. For full details see TLG releases on ASX 9/11/2010 and 25/11/2010.



McPhees - Diamond Drilling complete March 2011



Talga Talga new gold-in-soil targets

McPhees Prospect
gold in soil to 14.6 g/t Au in
untested zone between RC drillsites

2 km strike soil grid

3 km strike untested

New Chert-hosted Gold Target
700m+ long gold in soil zone

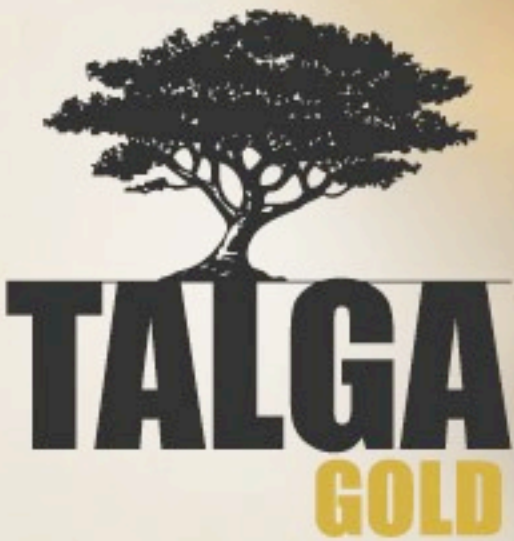


Scale 1.0 km

Talga Talga Project
Gold in Soil Geochemistry

14,600 ppb Au
1 ppb Au

TLG Tenement 100%
Area of 2010 Drilling

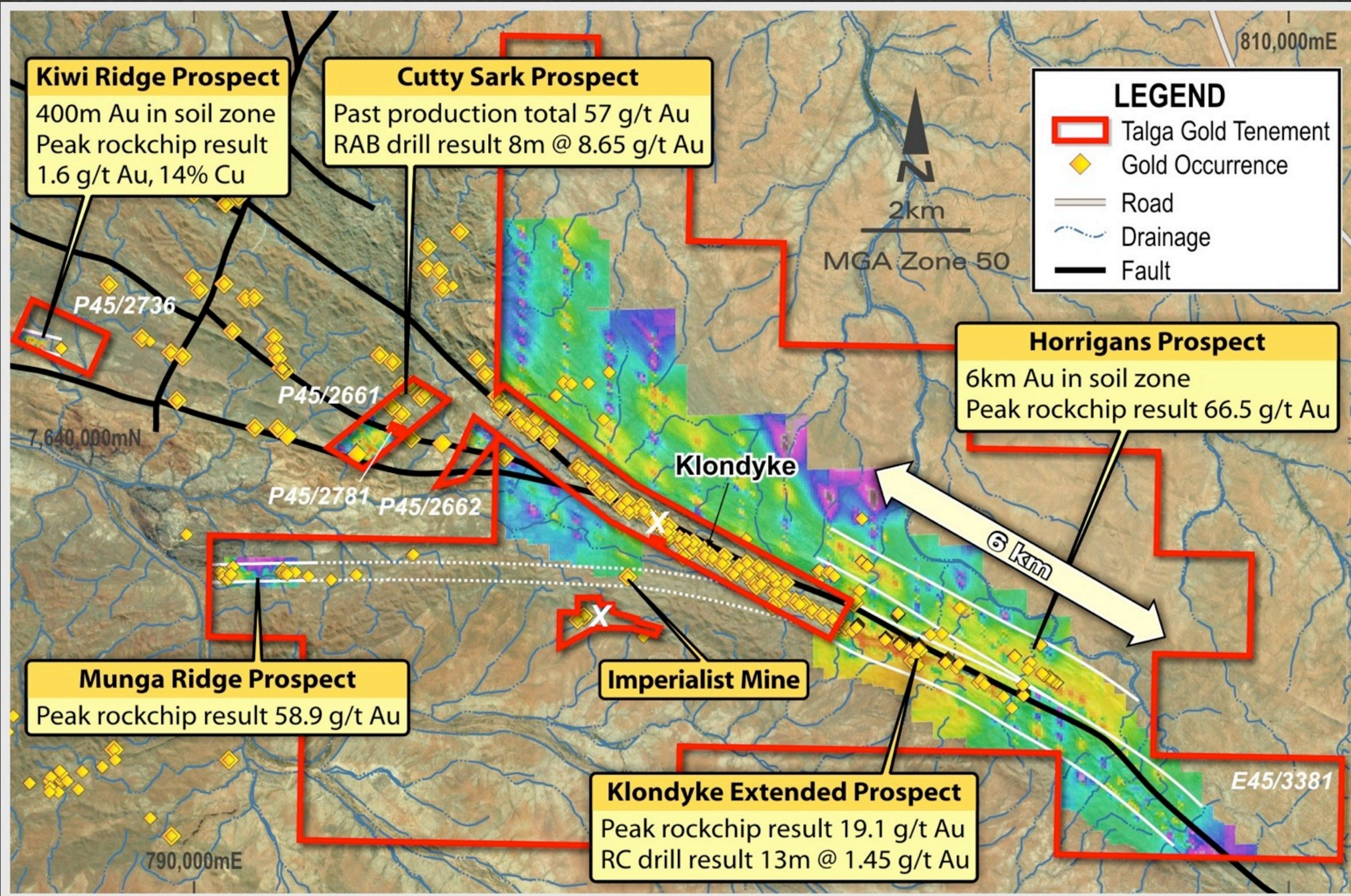


Talga Talga Project Wrap

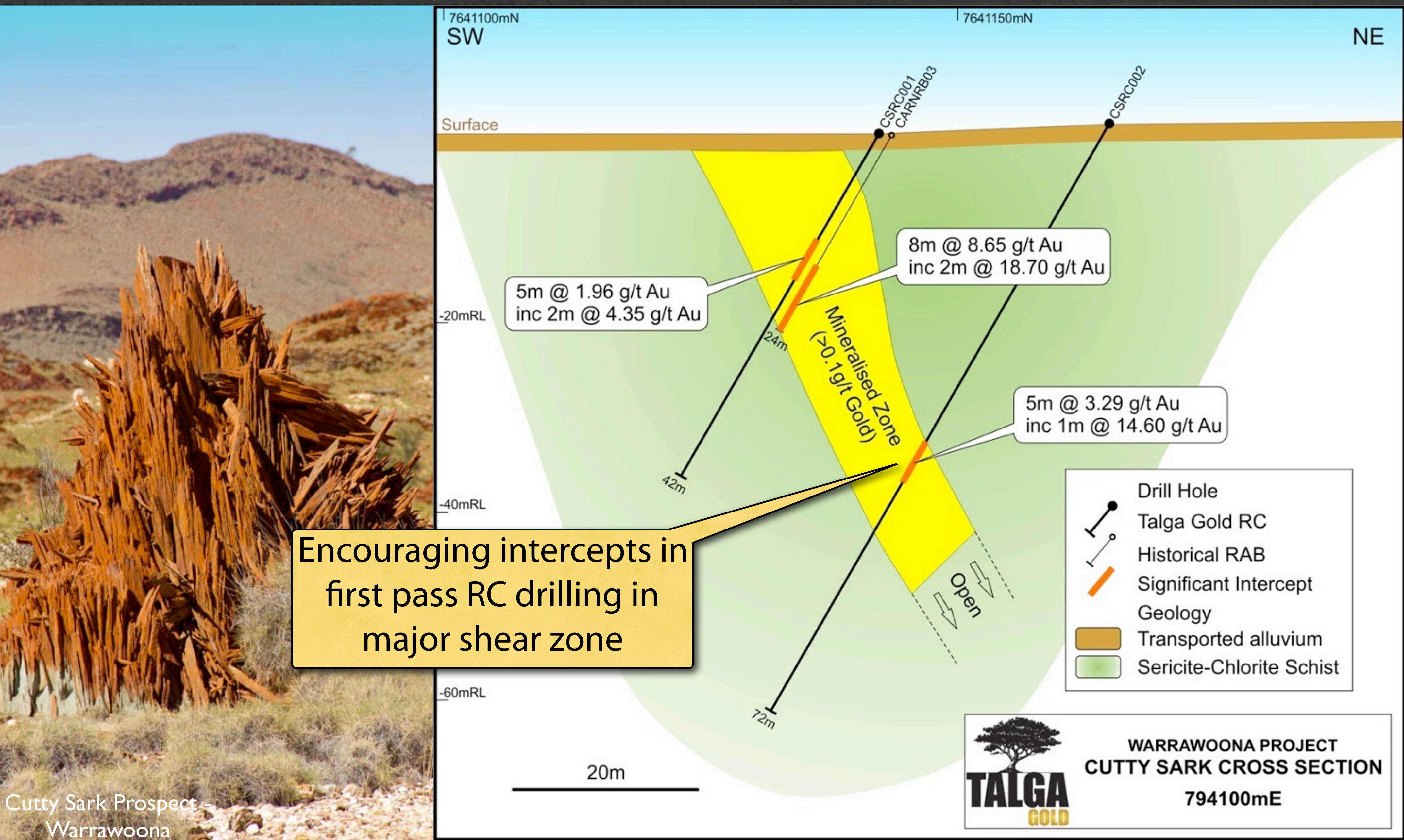
- High grade near-surface gold zones intercepted in first pass RC drilling
 - Up to 73g/t Au from outcrop to 50m depth
- Diamond drillcore being processed now
 - results expected in May
- Further RC drilling planned to step out and define scale (volume)
- Prospecting licences being granted - opens up next 3km of strike for drill testing this year

Outcropping visible gold at McPhees photographed March 2011

Warrawoona Project (TLG 100%)

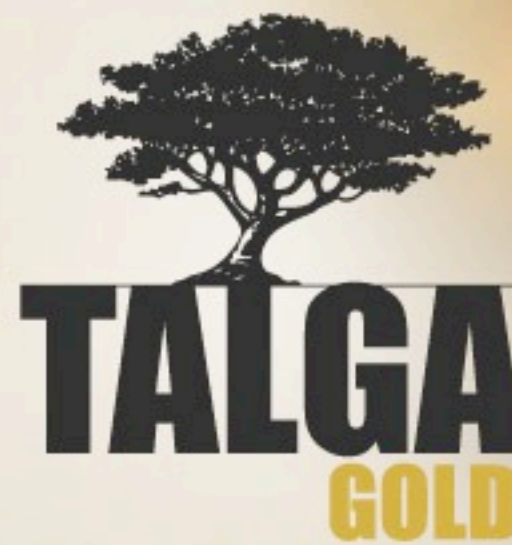
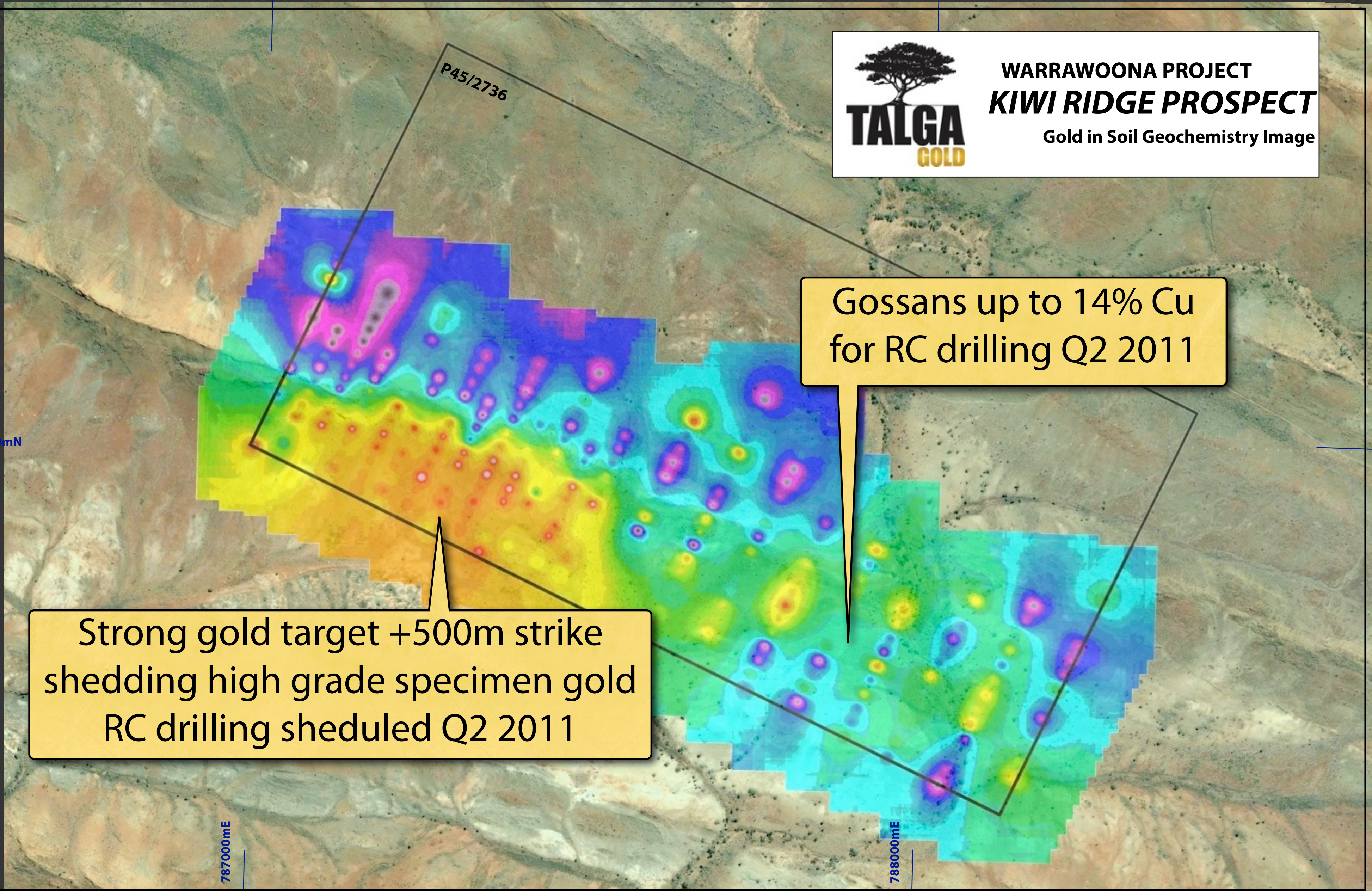


Warrawoona Project - Cutty Sark Prospect

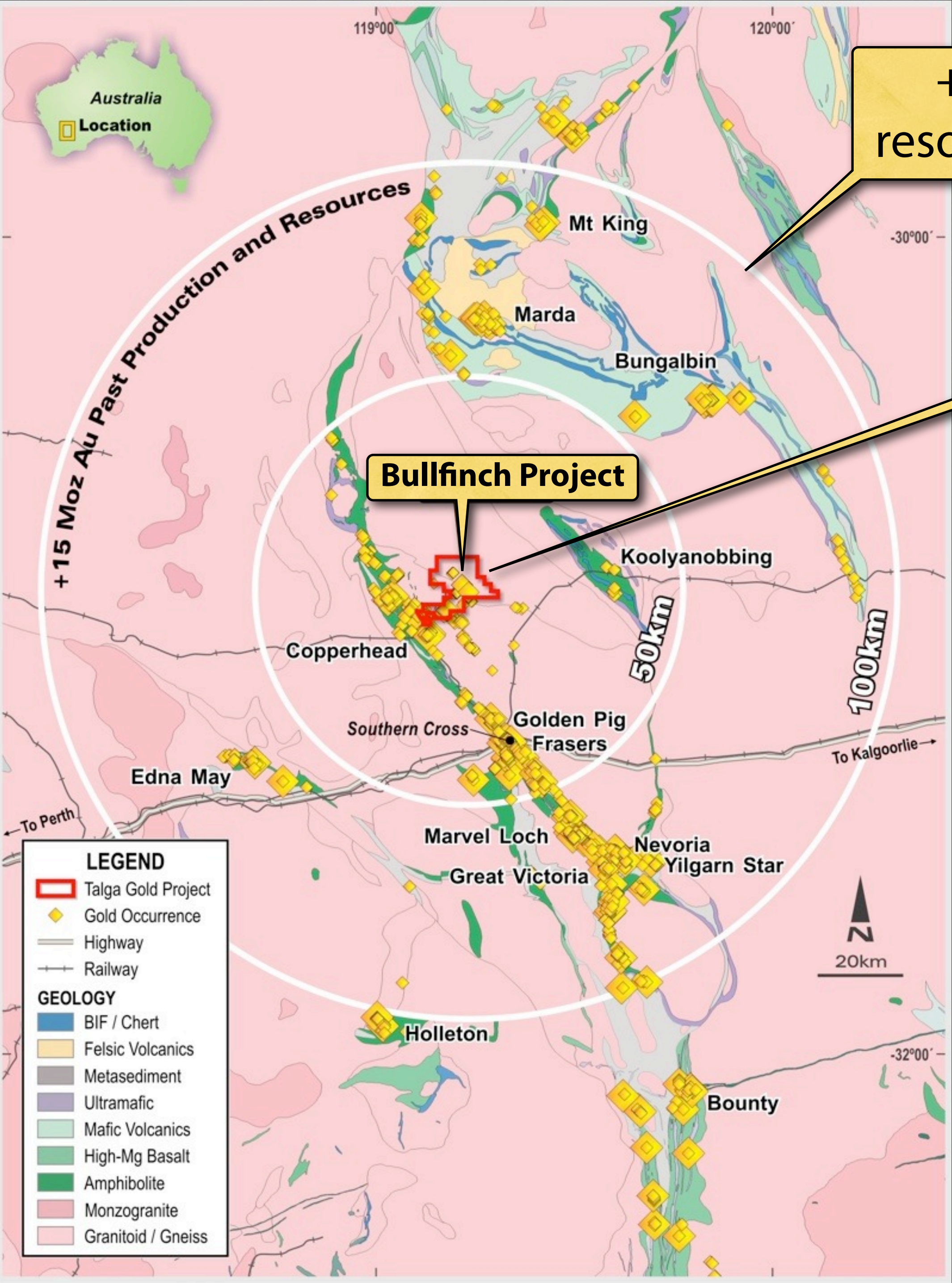


Cutty Sark Prospect - Warrawoona

Warrawoona Project - Kiwi Ridge Prospect



Bullfinch Project (TLG 100%)



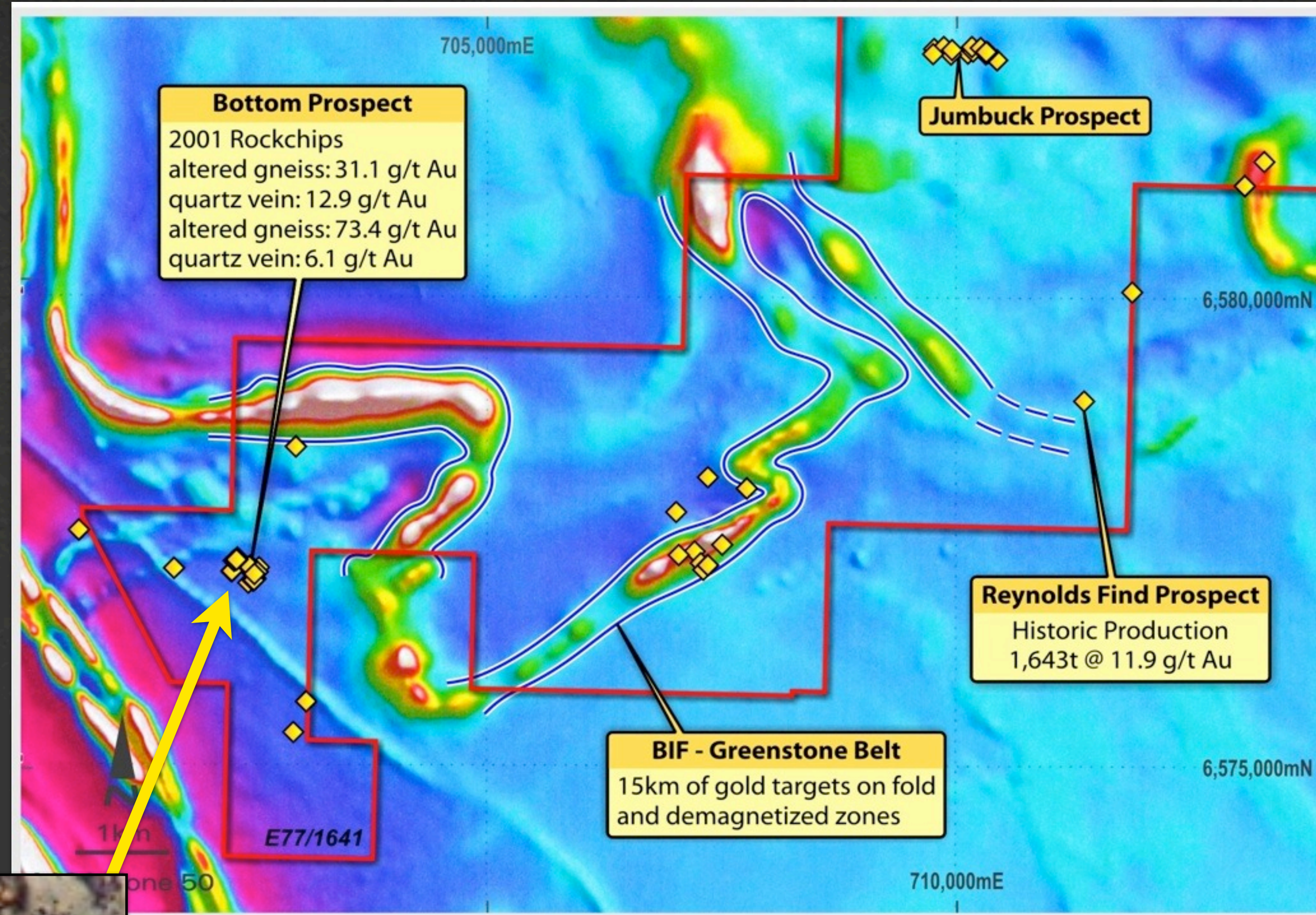
+15 Million Oz Au past production and resources from within 100km around project

TLG holding 161km²

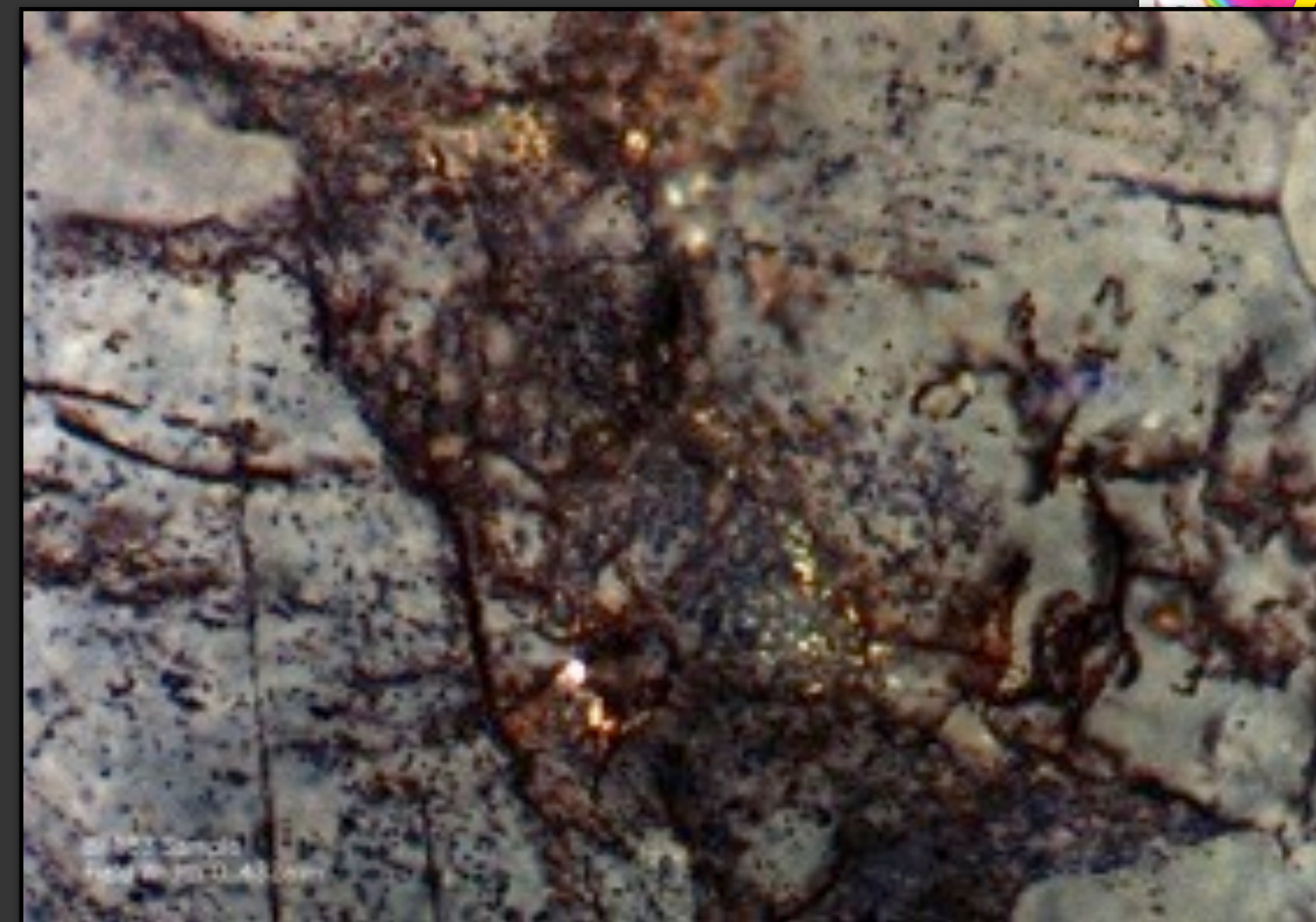
- Adjacent to Copperhead Mine (+1.5M Oz Au) and Radio Mine (+70,000oz Au @ 38.5 g/t Au)
- Targeting Copperhead style deposits along 15km BIF-Greenstone belt plus...
- Emerging Au-Te-Bi targets in gneissic host rocks modelled after large high metamorphic grade deposits ie. Edna May, Big Bell, Tropicana.

Bullfinch Targets

- At the Bottom prospect gold-fertile altered gneiss and granitoids host the highest gold grades
 - Up to 73.4 g/t Au
 - Drill testing scheduled

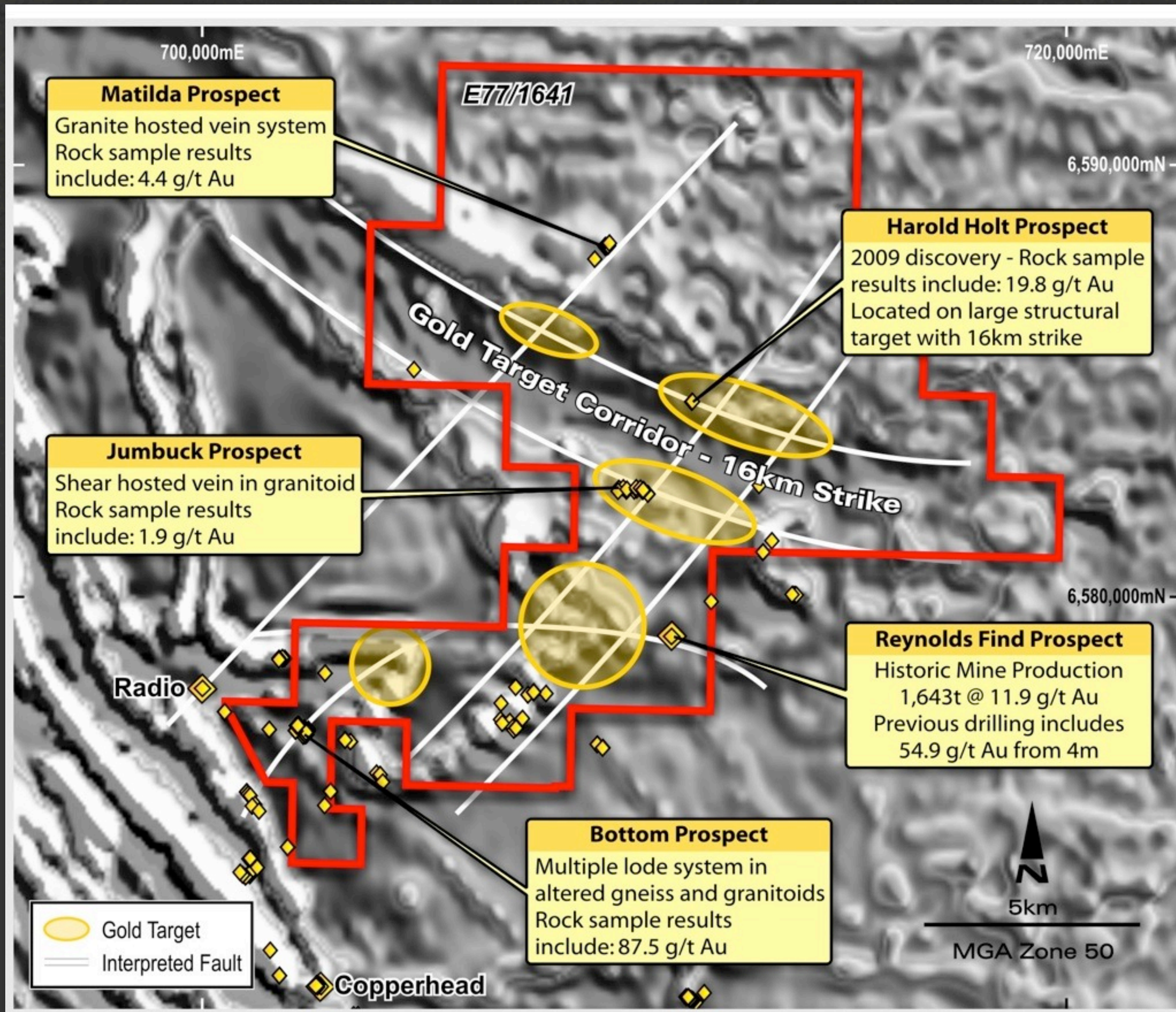


- 15km BIF -greenstone belt with folds and zones of magnetite destruction
- Many prospects hosted in shallow-dipping vein systems amenable to open cut mining with high grades persisting at depth for u/ground potential
- Excellent infrastructure and logistics



Microphotograph of rock sample from Bottom prospect showing gold in feldspar host

Bullfinch Targets



- Au-Bi-Te discovered outcropping at Harold Holt prospect
- Unmapped gold workings located along trends identified in geophysics
- Matilda and Harold Holt never drill tested - permitting underway for first pass RC drilling



Matilda Prospect

2011 Plans & News flow

1st Qtr 2011

Diamond drilling Talga Talga
Geochem assay results out on Talga Talga
& Bullfinch

2nd Qtr 2011

Drilling 2500m RC at Talga Talga &
Kiwi Ridge
Permitting and start Aircore/RAB/RC
drill targets on Bullfinch

3rd Qtr 2011

Drilling RC at Bullfinch
RC drill Klondyke-Horrigans prospects
in Warrawoona Project
Assay results out Talga Talga & Kiwi
Ridge

4th Qtr 2011

Assay results out on Bullfinch &
Warrawoona
Fieldwork completed on Mosquito
Creek for drill targets



TLG Investment Wrap



- 100% equity in outstanding gold projects
 - no third party interests or clawbacks
- High grade near-surface gold zones intercepted in first pass drilling
 - Up to 73g/t Au within top 50m depth @ Talga Talga
- Granted key claims and drill ready targets
- Excellent capital structure and management
 - Designed to 'fly', market cap \$14m @ 34c
- Gold Focus
 - high profit potential commodity with low Capex requirements compared to bulks so can minimise dilution



Disclaimer & Forward Looking Statements

This presentation has been prepared by Talga Gold Limited (ACN 138 405 419) ("Issuer") for the sole purpose of providing an overview of its current prospects and proposed exploration and development strategy to recipients ("Recipient"). This presentation and its contents are provided to the Recipient in confidence and may not be reproduced or disclosed in whole or in part to any other person, without the written consent of the Issuer.

The presentation is based on information available to the Issuer as at the date of the presentation. The information contained in this presentation has not been verified by the Issuer nor has the Issuer conducted any due diligence in relation to that information. The presentation contains selected information and does not purport to be all inclusive or to contain all information that may be relevant to the Recipient. The Recipient acknowledges that circumstances may change and this presentation may become outdated as a result. The Issuer accepts no obligation to update or correct this presentation.

This document includes forward-looking statements. When used in this document, the words such as "could," "plan," "estimate," "expect," "intend," "may," "potential," "should," and similar expressions are forward-looking statements. Although the Issuer believes that the expectations reflected in these forward-looking statements are reasonable, such statements involve risks and uncertainties, and no assurance can be given that actual results will be consistent with these forward-looking statements.

No representation or warranty, express or implied, is made as to the fairness, accuracy, completeness or correctness of the information, opinions and conclusions contained in this presentation. To the maximum extent permitted by law, none of the Issuer, its directors, employees or agents, advisers, nor any other person accepts any liability for any loss arising from the use of this presentation or its contents or otherwise arising in connection with it, including, without limitation, any liability arising from fault or negligence on the part of the Issuer or its directors, employees or agents. Nothing in this Presentation is a promise or representation as to the future. Statements or assumptions in this presentation as to future matters may prove to be incorrect and differences may be material. The Issuer does not make any representation or warranty as to the accuracy of such statements or assumptions.

The information in this presentation does not take into account the investment objectives, financial situation and particular needs of any Recipient. The Recipient should not make an investment decision on the basis of this presentation alone and the Recipient should conduct its own independent investigation and assessment of the content of this presentation. Nothing in this presentation constitute financial product, investment, legal, tax or other advice. Nothing in this presentation should be construed as a solicitation to buy or sell any security or to engage or refrain from engaging in any dealing in any security.

Photographs, maps, charts, diagrams and schematic drawings appearing in this presentation are owned by and have been prepared by or commissioned by the Issuer, unless otherwise stated. Maps and diagrams used in the presentation are illustrative only and may not be drawn to scale. Unless otherwise stated, all data contained in charts, graphs and tables is based on information available at the date of this presentation. Gold specimens pictured are from Talga Gold 100% owned projects. By accepting this presentation the Recipient agrees to be bound by the foregoing statements.

Competent Persons Statement

The information in this announcement that relates to Exploration Results has been compiled by Mr Mark Thompson who is a Director of the Company. Mr Thompson is a member of the Australian Institute of Geoscientists and has sufficient experience which is relevant to the style of mineralisation and type of deposit under consideration and to the activity to which he is undertaking to qualify as a "Competent Person" as defined in the 2004 edition of the "Australasian Code for Reporting of Exploration Results, Mineral Resources and Ore Reserves". Mr Thompson consents to the inclusion of information in this announcement in the form and context in which it appears.





ASX:TLG



Talga Gold Ltd

First Floor 2 Richardson Street
West Perth WA 6005
Tel +61 8 9481 6667
Fax +61 8 9322 1935
www.talgagold.com