



Talga Resources

Annual General Meeting

Perth, Australia

26th of November 2018



FORWARD LOOKING STATEMENTS & DISCLAIMER

This presentation has been prepared by Talga Resources Ltd (ACN 138 405 419) (“Issuer”) for the sole purpose of providing an overview of its current prospects and proposed exploration and development strategy to recipients (“Recipient”). This presentation and its contents are provided to the Recipient in confidence and may not be reproduced or disclosed in whole or in part to any other person, without the written consent of the Issuer.

The presentation is based on information available to the Issuer as at the date of the presentation. The information contained in this presentation has not been verified by the Issuer nor has the Issuer conducted any due diligence in relation to that information. The presentation contains selected information and does not purport to be all inclusive or to contain all information that may be relevant to the Recipient. The Recipient acknowledges that circumstances may change and this presentation may become outdated as a result. The Issuer accepts no obligation to update or correct this presentation.

This document includes forward-looking statements. When used in this document, the words such as "could," “plan," "estimate," "expect," "intend," "may," "potential," "should," and similar expressions are forward-looking statements. Although the Issuer believes that the expectations reflected in these forward-looking statements are reasonable, such statements involve risks and uncertainties, and no assurance can be given that actual results will be consistent with these forward-looking statements.

No representation or warranty, express or implied, is made as to the fairness, accuracy, completeness or correctness of the information, opinions and conclusions contained in this presentation. To the maximum extent permitted by law, none of the Issuer, its directors, employees or agents, advisers, nor any other person accepts any liability for any loss arising from the use of this presentation or its contents or otherwise arising in connection with it, including, without limitation, any liability arising from fault or negligence on the part of the Issuer or its directors, employees or agents. Nothing in this Presentation is a promise or representation as to the future. Statements or assumptions in this presentation as to future matters may prove to be incorrect and differences may be material. The Issuer does not make any representation or warranty as to the accuracy of such statements or assumptions.

The information in this presentation does not take into account the investment objectives, financial situation and particular needs of any Recipient. The Recipient should not make an investment decision on the basis of this presentation alone and the Recipient should conduct its own independent investigation and assessment of the content of this presentation. Nothing in this presentation constitute financial product, investment, legal, tax or other advice. Nothing in this presentation should be construed as a solicitation to buy or sell any security or to engage or refrain from engaging in any dealing in any security.

Photographs, maps, charts, diagrams and schematic drawings appearing in this presentation are owned by and have been prepared by or commissioned by the Issuer, unless otherwise stated. Maps and diagrams used in the presentation are illustrative only and may not be drawn to scale. Unless otherwise stated, all data contained in charts, graphs and tables is based on information available at the date of this presentation. By accepting this presentation the Recipient agrees to be bound by the foregoing statements.

STRONGER SMARTER CLEANER

THE ADVANCED MATERIALS TECHNOLOGY COMPANY

Enabling stronger, lighter and more functional products for the multi-billion dollar global coatings, battery, construction and polymer composites markets via graphene and graphite products.

The company has significant advantages due to its 100% owned unique high grade graphite deposits in Sweden and in-house processing and product technology. Joint development programs are underway with a range of international corporations, to underwrite demand for a full scale production facility in Sweden.

Talga Resources Ltd is an ASX listed public company incorporated and domiciled in Australia. Talga Resources Ltd has a 100% interest in subsidiaries Talga Mining Pty Ltd, Talga Advanced Materials GmbH, Talga Technologies Limited (UK), Talga Graphene AB and Talga Battery Metals AB.

ANNUAL GENERAL MEETING: 2017 - 2018 HIGHLIGHTS

Strong Commercial Activity

- ▶ **Bosch** MoU for graphene application
- ▶ **BillerudKorsnäs** Lol for packaging application
- ▶ Commercial Sales & Dev Agreement **Haydale**
- ▶ **Biomer** JDA for polymer application
- ▶ Sales+Distribution Agreement with **Possehl**

Product Development Success

- ▶ Positive graphene product test results in **concrete** and **coatings**
- ▶ Breakthrough Li-ion **anodes** developed
- ▶ Strengthened **intellectual property** assets

Growing Global Group and European Operations

- ▶ Innovate UK **funding secured** for battery materials
- ▶ Strengthened balance sheet (**\$16.6m cash** 30 Sept)
- ▶ Phase 3 scale-up process test facility **completed**
- ▶ Strengthened Europe-based management and **in-house technology** teams



BATTERY PRODUCTS

Active anode materials (powders) with superior performance in Li-ion batteries



Talnode™

Engineered graphite anode for super stable lifetime and 20% higher capacity

Talnode™ - X

Formulated graphite anode for ultra-fast charge rates (0-100% in 3 minutes)

Talnode™ - Si

Graphene Silicon-anode for high energy density (50% higher than standard)

Talphone® Conductive Agent (under development)

Functionalised graphene additive for Li-ion battery cathodes

Selection of Current Commercial Partners



COATINGS PRODUCTS

Graphene additives and formulations for high performance and lower eco-impact



Talphene® Pre-treatment

Chrome and toxic metals replacement with 74% more corrosion protection

Talphene® Epoxy Coatings

Increases strength and anti-corrosion performance

Talphene® Packaging Applications (under development)

Smart packaging, longer shelf life and increased recycling

Talphene® Inks

Superior electrical conductivity for printed electronics, sensors and smart labels

Selection of Current Commercial Partners



▶ DR. KARANVEER SINGH ANEJA
SENIOR SCIENTIST

CONCRETE PRODUCTS

Admixtures and aggregates for improved strength, thermal and electrical conductivity



Talphone® Admixtures

Improving concrete flexural strength (to 8.2N/mm²) and compressive strength (to 54N/mm²) aiding construction with better costs and emissions

Applications: high rise buildings, bridges, road and rail infrastructure

Conductive Aggregates

Enabling thermally and electrically conductive materials for smarter construction, attaining electrical resistance of 0.05 ohm.cm volume

Applications: underground powerline heat dissipation, underfloor heating, ice-free road-bridge-tarmac areas, wireless charging of electric vehicles

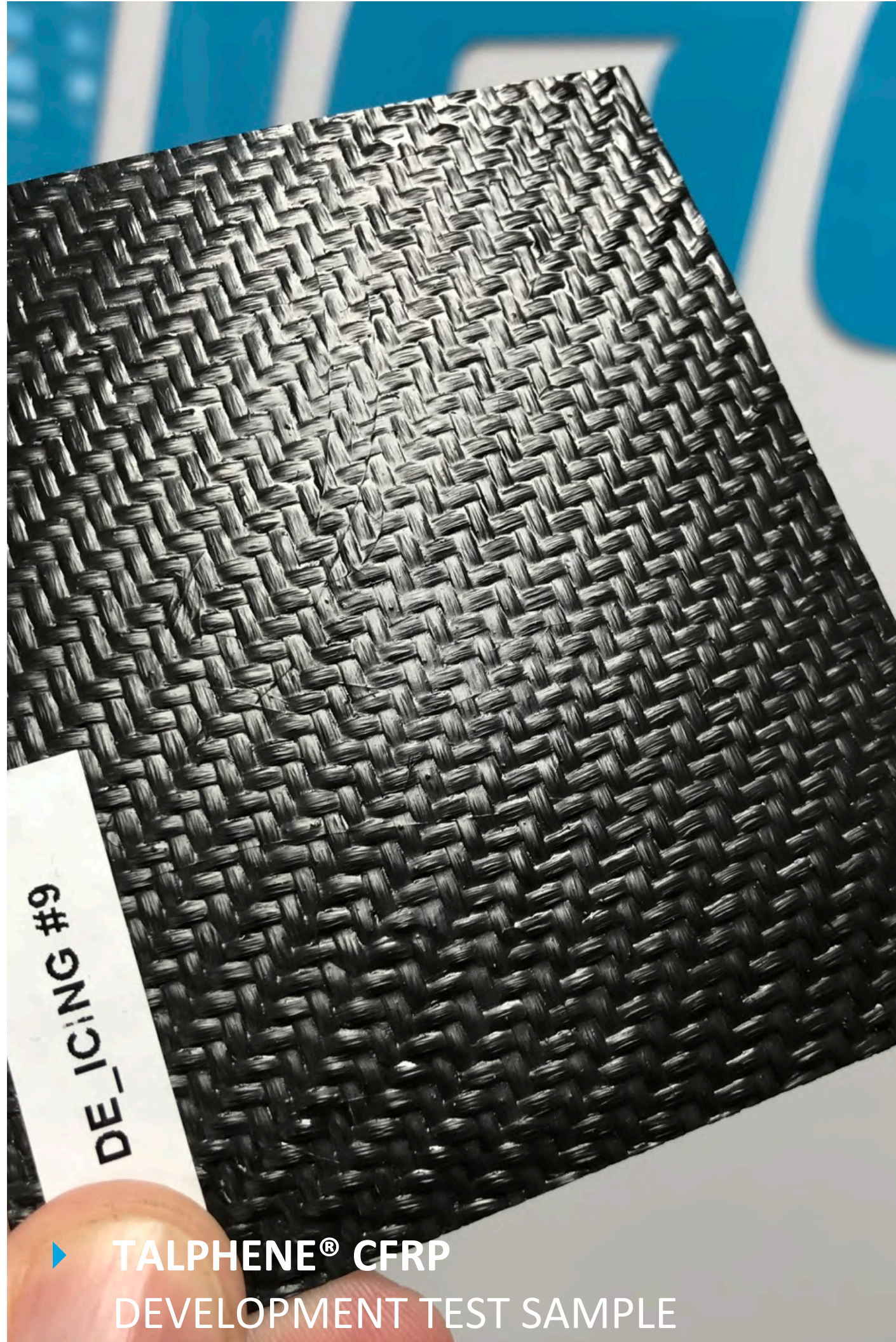
Selection of Current Commercial Partners

HEIDELBERGCEMENT

▶ TALPHONE® CONCRETE SAMPLES
AT TALGA TECHNOLOGIES LTD

COMPOSITE PRODUCTS

Functionalised graphene additives for increased toughness and conductivity



Talphen® additives for thermoplastic polyurethanes

Additives to create advanced biomedical healthcare products and reduce eco-impacts of ship coatings in the marine environment

Applications: biomaterials (medical devices) and anti-foul marine coatings

Talphen® additives for Carbon Fibre Reinforced Polymers (in development)

Additives to improve strength, toughness, weight and conductivity of CFRP to enable metal-free lightning strike protection and de-icing

Applications: CFRP aircraft and wings, wind turbine blades and automotive parts

Selection of Current Commercial Partners



TALGA TECHNOLOGIES LIMITED - UK

Material technology, product and commercialisation development

Team of graphene experts, chemists, physicists and material scientists with long-standing experience in product development, R&D and sales working closely with commercial partners to develop Talga's range of graphene and graphite products for the battery, construction, coatings and composite markets.



▶ **DR. ANNA MOTTA**
GLOBAL R&D MANAGER



▶ **DR. SIVA BOHM**
CHIEF TECHNOLOGY OFFICER



▶ **DR. SAI SHIVAREDDY**
MANAGER - BATTERY PRODUCTS

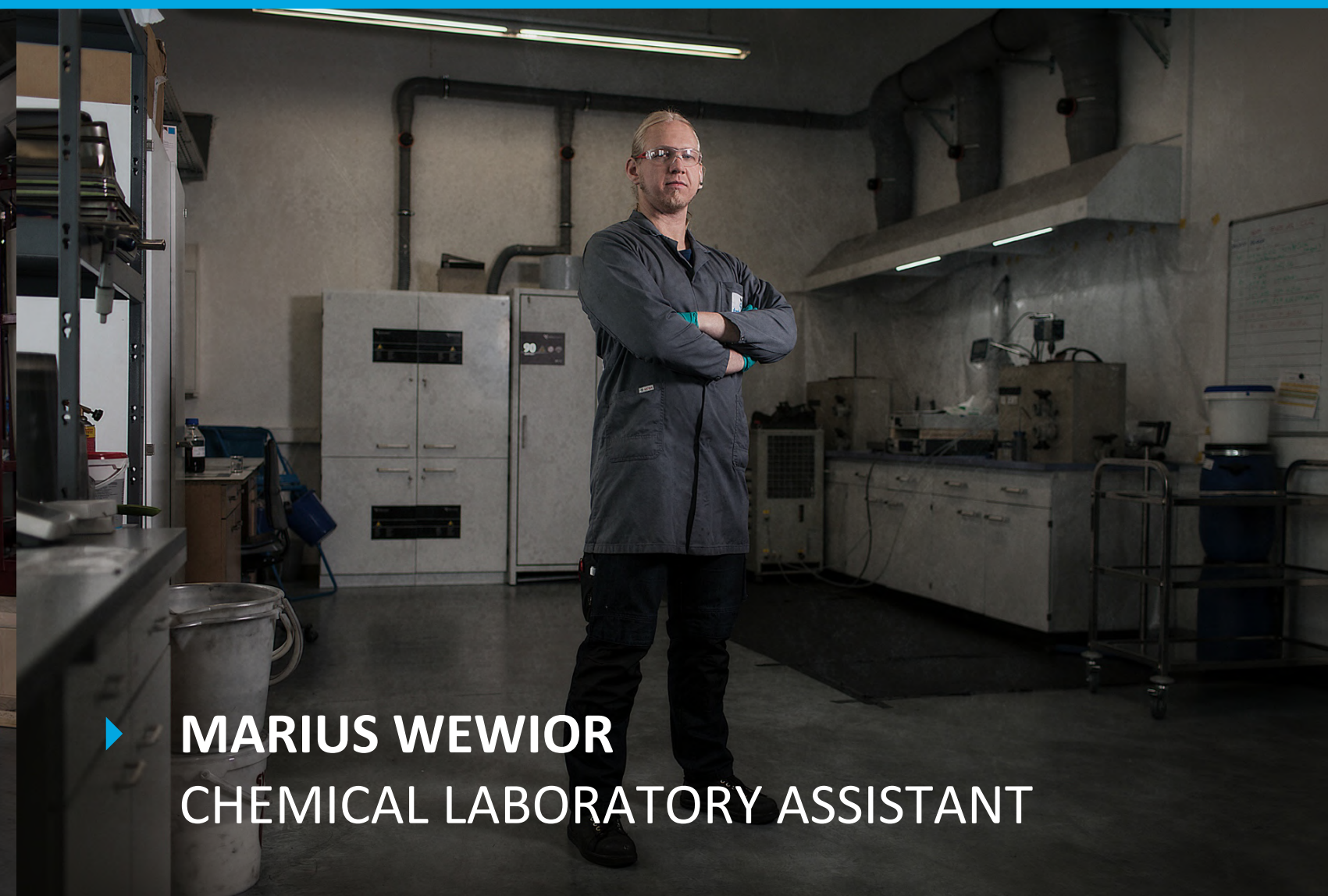
TALGA ADVANCED MATERIALS GMBH - GERMANY

Process development, engineering and production

Highly skilled engineering, processing and project chemist staff developing production technologies and processes on a pilot scale for optimising proprietary engineering solutions for construction of future commercial scale processing plant facility. High-quality sample output is packaged towards customer and product development programs.



▶ **TOBIAS KLATTE**
PROJECT CHEMICAL ENGINEER



▶ **MARIUS WEWIOR**
CHEMICAL LABORATORY ASSISTANT



▶ **ROSHEN MATHURA**
BUSINESS AND SITE MANAGER

TALGA GRAPHENE AB - NORTH SWEDEN

Mineral resource project development and exploration

Expanding team of earth scientists, project management and stakeholder engagement specialists for ongoing exploration and continued progress on permitting and feasibility related surveys and studies towards concurrent mining, environmental and exploitation licence applications at Talga's Vittangi Graphene-Graphite Project in 2019.



▶ **TOM KEARNEY**
PROJECT GEOLOGIST



▶ **AMANDA SCOTT**
EXPLORATION MANAGER



▶ **MARTIN PHILLIPS**
GROUP CHIEF OPERATING OFFICER

TALGA BATTERY METALS AB - NORTH SWEDEN

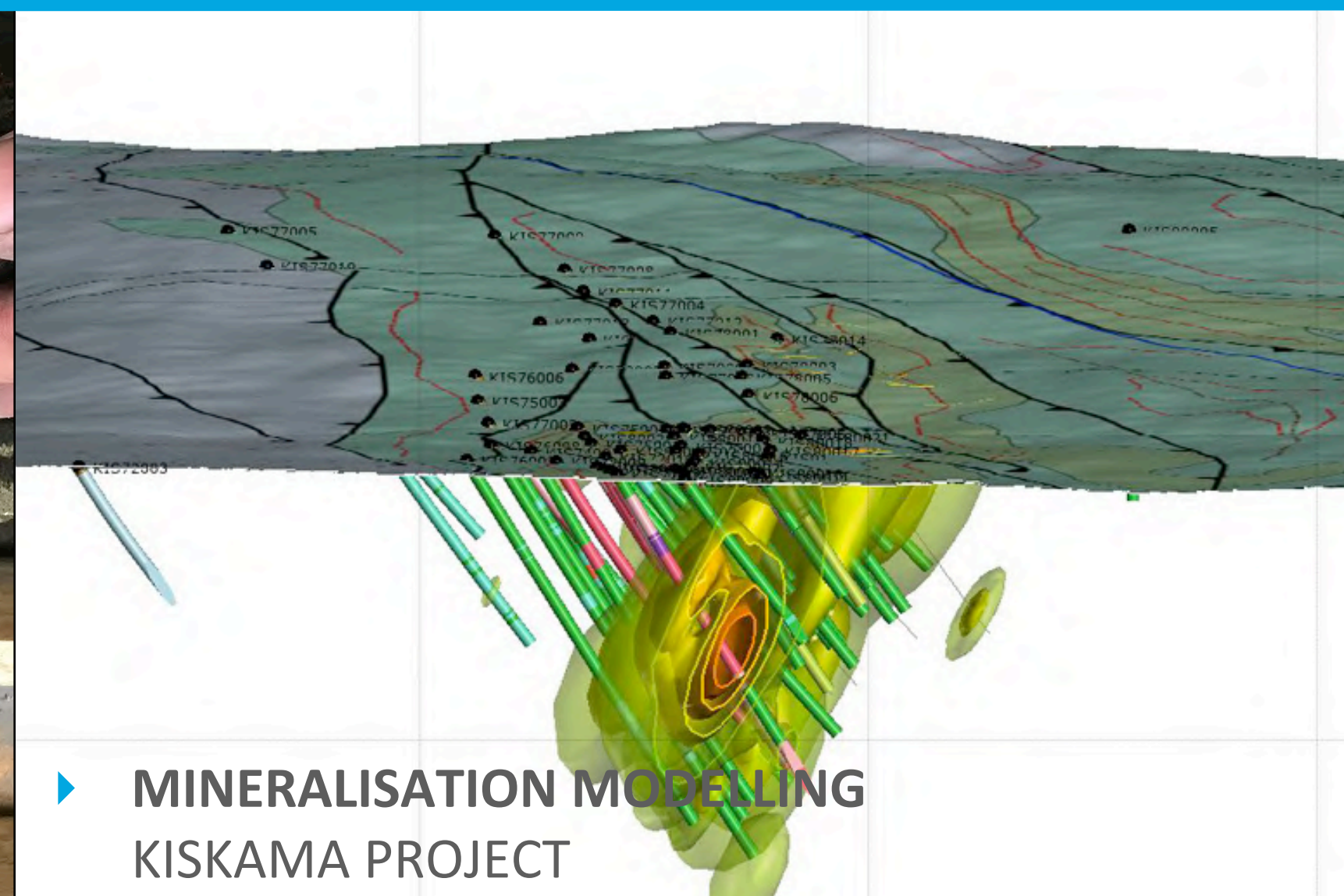
Cobalt-copper-gold and other non-core mineral assets

In 2018 Talga undertook an internal split of its Battery Metals projects from Graphene-Graphite projects. The Company is now drilling the Kiskama project, Sweden's largest cobalt deposit, towards a maiden JORC mineral resource to enable a scoping study and upgrade from exploration to development status.

The company also owns additional projects containing known occurrences of copper, iron, gold, lithium and vanadium. This strong mineral portfolio is in a top class jurisdiction and the Company will look to monetise these assets in a way that creates maximum value for shareholders.



▶ DRILL CORE
AHMAVUOMA PROJECT



▶ MINERALISATION MODELLING
KISKAMA PROJECT



▶ DRILL CORE
LAUTAKOSKI PROJECT

LOOKING AHEAD

Commercial and Product Development

- ▶ Parallel development of Talnode™ and Talphene® product lines
- ▶ Finalising Talphene® and Talnode™ product development to advance current programs, secure new commercial agreements and underwrite full scale project
- ▶ Expanding commercial capability with appointment of Technical Sales Manager and commercial staff in Europe

Operations and Development

- ▶ Completion of PFS for Vittangi graphene-graphite project targeting end of first Qtr 2019 for application of all development permits in Sweden
- ▶ Develop options for sale of Talnode™ products starting in 2019 using currently mined ore stocks

Growth and Strategy

- ▶ Battery products maturing to accelerate and underwrite further production
- ▶ New and strategic partners to be sought for full scale development
- ▶ Non-core mineral assets to be explored and upgraded to determine full value for monetisation

▶ FORMULATED TALPHENE® ADDITIVE



CORPORATE SNAPSHOT



FINANCIAL INFORMATION

Shareholders	~3,700
Share price (ASX code TLG) (23-November-18)	A\$0.40
52 week low / high	A\$0.37 / A\$0.92
Shares outstanding ^{1,2}	217.7m
Market Capitalisation	A\$87.1m
Cash (30-Sep-18)	~A\$16.6m
Debt (30-Sep-18)	Nil
Enterprise value	A\$70.5m

Source: IRESS, company filings. As at 23 November 2018.

¹ Excludes 43.5m listed options (TLGOA) with exercise price A\$0.45 and expiring 31 Dec 2018

² Excludes 26.7m unlisted options (mostly employees and directors) with exercise price range up to A\$1.02 and expiry date range 31 Dec 2018 to 17 Dec 2020

SHARE PRICE PERFORMANCE

Share price (A\$) 12 months

Volume (m)



MAJOR SHAREHOLDERS

Smedvig - Scandinavian based family office	11.7%
Mark Thompson - Managing Director	6.6%
J P Morgan Nominees (Australia) Ltd	6.5%
HSBC Custody Nominees (Australia)	5.5%
Pelmer Securities	4.2%
Citicorp Nominees	3.4%
Top 20	54.4%

BOARD OF DIRECTORS

Substantial resource, technology, commercialisation and finance experience



Terry Stinson

Non-Executive Chairman



Mark Thompson

Managing Director



Grant Mooney

Non-Executive Director



Steve Lowe

Non-Executive Director



Ola Mørkved Rinnan

Non-Executive Director

CONTACT US

Talga Resources Ltd

First Floor, 2 Richardson Street, West Perth WA 6005, Australia

P | +61 8 9481 6667

E | admin@talgaresources.com

W | www.talgaresources.com

Talga Technologies Limited

The Bradfield Centre
184 Cambridge Science Park,
Cambridge CB4 0FQ, UK

Talga Advanced Materials GmbH

Prof.-Hermann-Klare-Str. 25, 07407 Rudolstadt, Germany

Talga Graphene AB / Talga Battery Metals AB

Storgatan 7, 972 38 Luleå, Sweden



APPENDIX AND STATEMENTS

Competent Person's Statements

The information in this document that relates to exploration results is based on information compiled by Amanda Scott, a Competent Person who is a Member of the Australian Institute of Mining and Metallurgy (Membership No.990895). Amanda Scott is a full-time employee of Scott Geological AB. Amanda Scott has sufficient experience, which is relevant to the style of mineralisation and types of deposits under consideration and to the activity which has been undertaken to qualify as a Competent Person as defined in the 2012 edition of the Australasian Code for Reporting of Exploration Results, Mineral Resources and Ore Reserves (JORC Code). Amanda Scott consents to the inclusion in the report of the matters based on her information in the form and context in which it appears.

The information in this report that relates to Graphite Resource Estimation for the Vittangi Project is based on information compiled by Oliver Mapeto and reviewed by Albert Thamm. Both Mr Mapeto and Mr Thamm are consultants to the Company. Mr Mapeto is a Member of both the Australian Institute of Mining and Metallurgy (Membership No.306582) and Australian Institute of Geoscientists (Member No 5057) and Mr Thamm (Member No 203217) is a Fellow Member of the AusIMM.

Both Mr Mapeto and Mr Thamm have sufficient experience relevant to the styles of mineralisation and types of deposits which are covered in this document and to the activity which both are undertaking to qualify as a Competent Person as defined in the 2012 edition of the "Australasian Code for Reporting of Exploration Results, Mineral Resources and Ore Reserves" ("JORC Code"). Mr Mapeto and Mr Thamm consent to the inclusion in this report of the Matters based on this information in the form and context in which it appears.

The information in this report that relates to Exploration Targets is based on information compiled and reviewed by Mr Simon Coxhell, a consultant to the Company and a member of the Australian Institute of Mining and Metallurgy and Mr Mark Thompson, who is an employee of the Company and a member of the Australian Institute of Geoscientists. Mr Thompson and Mr Coxhell have sufficient experience which is relevant to the activity which is being undertaken to qualify as a "Competent Person" as defined in the 2012 Edition of the "Australasian Code for Reporting of Exploration Results, mineral Resources and Ore Reserves" ("JORC Code"). Mr Thompson and Mr Coxhell consent to the inclusion in the report of the matters based on this information in the form and context in which it appears.

The information in this report that relates to Iron Ore Resource Estimation and Graphite Resource Estimation for the Jalkuen and Raitajärvi Projects is based on information compiled and reviewed by Mr Simon Coxhell. Mr Coxhell is a consultant to the Company and a member of the Australian Institute of Mining and Metallurgy. Mr Coxhell has sufficient experience relevant to the styles of mineralisation and types of deposits which are covered in this document and to the activity which he is undertaking to qualify as a Competent Person as defined in the 2012 edition of the "Australasian Code for Reporting of Exploration Results, Mineral Resources and Ore Reserves" ("JORC Code"). Mr Coxhell consents to the inclusion in this report of the Matters based on this information in the form and context in which it appears.

Cautionary Statement

Any data on the scoping study referred to in this report is based on low level technical and economic assessments, and is insufficient to support estimation and economic assessments, and is insufficient to support estimation of Ore Reserves or to provide assurance of an economic development case at this stage, or to provide certainty that the conclusion of the scoping study will be realised. The Company confirms that all material assumptions and technical parameters underpinning the scoping study results and projections in this release continue to apply and have not materially changed. The use of the word "ore" in the context of this report does not support the definition of 'Ore Reserves' as defined by the 2012 Edition of the 'Australasian Code for Reporting of Exploration Results, Mineral Resources and Ore Reserves'. The word 'ore' is used in this report to give an indication of quality and quantity of mineralised material that would be fed to the processing plant and is not to assumed that 'ore' will provide assurance of an economic development case at this stage, or to provide certainty that the conclusion of the scoping study will be realised.

GRAPHITE JORC RESOURCES AND EXPLORATION TARGETS



Nunasvaara JORC (2012) Mineral Resource (17% Cg cut-off)

JORC 2012 Classification	Tonnes	Graphite (%Cg)
Indicated	10,700,000	25.7
Inferred	1,600,000	23.9
Total	12,300,000	25.5

Jalkunen JORC (2012) Mineral Resource (5% Cg cut-off)

JORC 2012 Classification	Tonnes	Graphite (%Cg)
Inferred	31,500,000	14.9

Raitajärvi JORC (2004) Mineral Resource¹ (5% Cg cut-off)

JORC 2004 Classification	Tonnes	Graphite (%Cg)
Indicated	3,400,000	7.3
Inferred	900,000	6.4
Total	4,300,000	7.1

Talga Graphite Exploration Targets² 0-100m Depth

Project	Exploration Target	Tonnes (0-100m Vertical Depth)		Graphite (%Cg)	
		Min.	Max.	Min.	Max.
Nunasvaara	Nunasvaara	62,400,000	93,600,000	20	30
	Vittangi Kotajärvi	16,640,000	30,160,000	20	25
	Vittangi Maltosrova	20,800,000	52,000,000	20	25
Jalkunen	Tiankijokki	2,600,000	5,200,000	15	25
	Nybrännan	5,200,000	10,400,000	20	30
	Jalkunen Suinavaara	2,600,000	5,720,000	15	25
	Lautakoski	26,000,000	52,000,000	15	25
Subtotal		136,240,000	249,080,000	19	27
Rounded Total		136,000,000	250,000,000	18	25

¹ Note: This information was prepared and first disclosed under the JORC code 2004. It has not been updated since to comply with the JORC code 2012 on the basis that the information has not materially changed since it was last reported. The Company is not aware of any new information or data that materially affects the information included in the previous announcement and that all of the previous assumptions and technical parameters underpinning the estimates in the previous announcement have not materially changed.

² Note: The Exploration Target is based on a number of assumptions and limitations with the potential grade and quantity being conceptual in nature. There has been insufficient exploration to estimate a Mineral Resource Estimate in accordance with the JORC Code and it is uncertain if future exploration will result in the estimation of a Mineral Resource.