

Talga Group

ASX:TLG

OTCQX:TLGRF



The Next Graphite Anode Producer

Noosa Mining Conference

13 November 2025

Cautionary Statement and Disclaimer

Talga Group Ltd ACN 138 405 419 (the Company) is the issuer of this presentation.

Forward-looking statements

This presentation contains forward-looking statements. Those forward-looking statements reflect views held only as at the date of this presentation. Any such statement is subject to inherent risks and uncertainties. Actual events or results may differ materially from the events or results expressed or implied in any forward-looking statement, and such deviations are both normal and to be expected. Recipients must make their own assessment about the likelihood of a matter, about which a forward-looking statement is made, occurring. The Company makes no representation about the likelihood of a matter, about which a forward-looking statement is made, occurring. The Company and its directors, employees, agents, advisers and consultants: give no representation or warranty to a recipient of this presentation as to the accuracy or completeness of the statements contained in this presentation or in relation to any other matter; and to the fullest extent permitted by law, disclaim responsibility for and have no liability to a recipient of this presentation for any error or omission in or for any statement in this presentation, including any liability arising from negligence.

Reliance on presentation

A recipient of this presentation must make their own assessment of the matters contained herein and rely on their own investigations and judgment in making an investment in the Company. This presentation does not purport to contain all of the information required to make an informed decision whether to invest in the Company. Specifically, this presentation does not purport to contain all the information that investors and their professional advisers would reasonably require to make an informed assessment of the Company's assets and liabilities, financial position and performance, profits, losses and prospects.

Not a recommendation or financial advice

The information in this presentation is not a recommendation to subscribe for securities in the Company and does not constitute financial advice. Any person who intends to subscribe for securities must conduct their own investigations, assessment and analysis of the Company and its operations and prospects and must base their investment decision solely on those investigations and that assessment and analysis. Prospective investors should consult their own legal, accounting and financial advisers about an investment in the Company.

Photographs and images

Photographs, maps, charts, diagrams and schematic drawings in this presentation are owned by and have been prepared or commissioned by the Company, unless otherwise stated. Maps and diagrams used are illustrative only and may not be drawn to scale. Unless stated otherwise, all data contained in charts, graphs and tables is based on information available at the date of this presentation.

Talga introduction

Battery-Ready Coated Graphite

Active anode material production (not raw material).

100% Owned Tech

PFE/FEOC-free equipment & coating technology.

Customer-Qualified

Validated with multiple clients in high-performance apps. Binding offtake with Nyobolt for fast-charge.

Proven Production

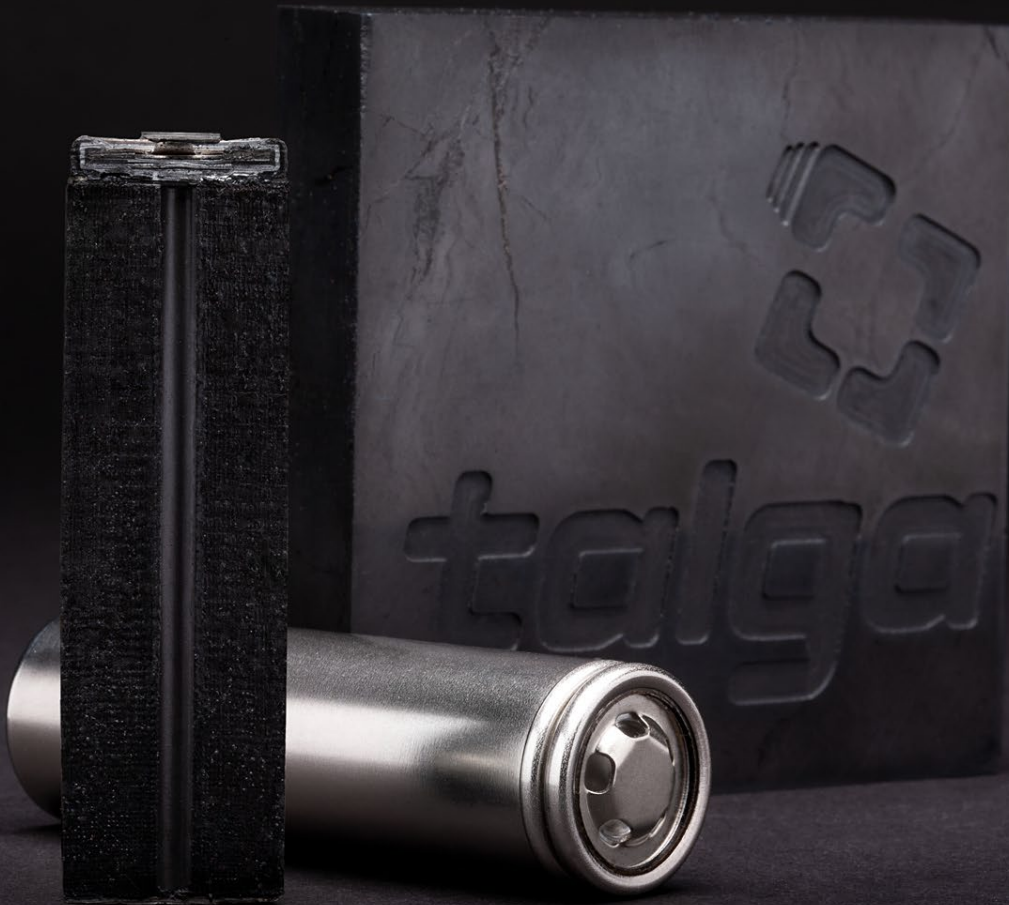
Demo plant operating since 2022.

19,500tpa anode plant permitted & build-ready

Construction set to start pending FID.

Modular & Scalable

Major expansion stages in Sweden scoped and new global expansion opportunities arising with recycled feedstocks.



Corporate Summary

Board



Terry Stinson- Non-executive Chair

Over 35 years' Executive and Non-Executive Director experience, working for global innovation companies. Formerly the CEO & MD of Orbital Corporation, VP for Global Fuel Systems at Siemens AG, CEO and MD of Synerject and VP of Manufacturing Outboard Marine Corporation.



Mark Thompson – Founder & Managing Director

Over 30 years experience in the geoscience and material technology industries, with a strong background in public company leadership and capital markets. Founder of Talga, and ASX-listed Catalyst Metals Ltd, and is a non-executive Director of Accelerate Resources Ltd.



Grant Mooney – Non-executive Director

Mr Mooney has extensive experience in corporate advisory and equity capital markets, corporate governance, and M&A transactions along with a wealth of experience in resources and technology markets. He is a member of the Institute of Chartered Accountants in Australia.



Eva Nordmark – Non-executive Director

Former Swedish Minister for Employment and Gender Equality. Before role as Minister in two consecutive cabinets, Ms Nordmark was President of the Swedish Confederation of Professional Employees (TCO) and has also served as Chair of Luleå University of Technology.

CEO



Martin Phillips – Chief Executive Officer

More than 25 years of global metals and mining sector experience, and Director of Talga's Swedish subsidiary Talga AB. Based in Stockholm, he holds a B.Sc Chemical Engineering (Honours) and Grad. Dip. in Applied Finance and Investment. Mr Phillips oversees the company's integrated, battery and advanced material production operations.

ASX:TLG OTCQX:TLGRF

At 12 Nov 2025

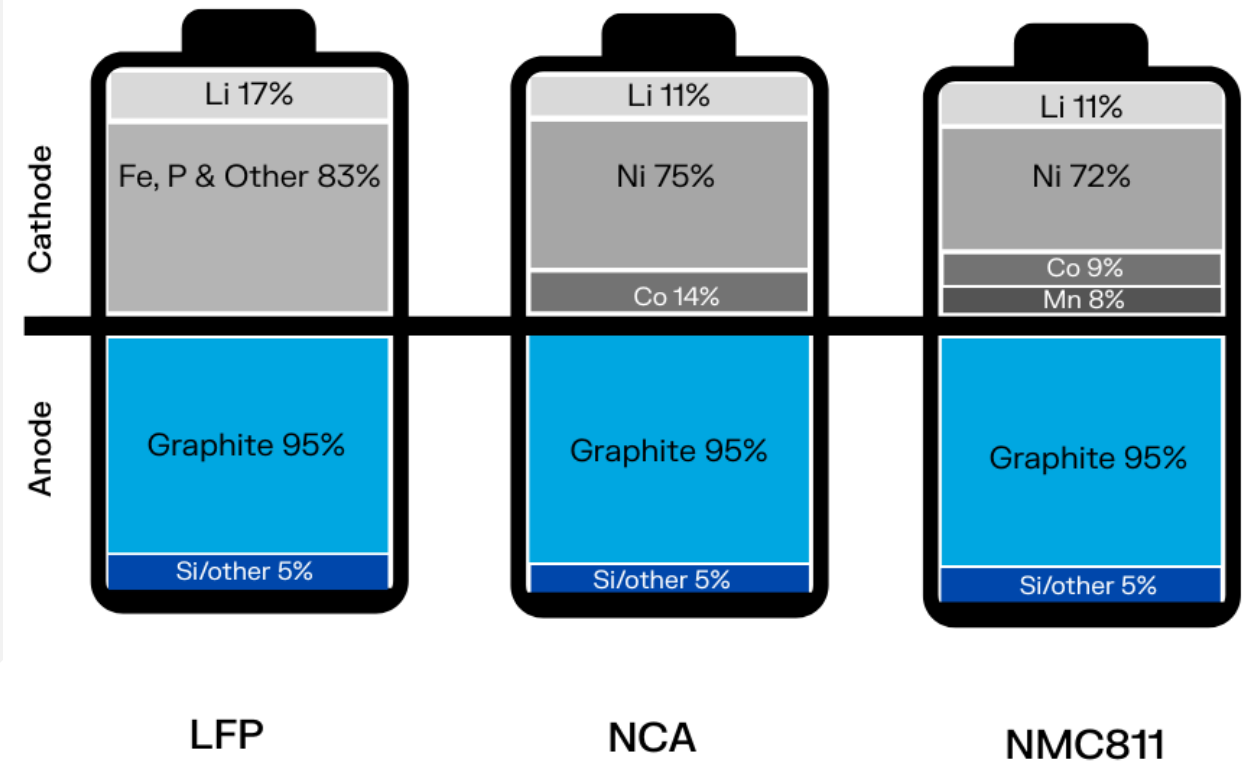
Ordinary Shares	456.3 M
Share Price	A\$0.44
Market Cap	A\$200m
52 week low/high	\$0.335 - \$0.565
Research Coverage	

Citicorp Nominees P/L	32,399,153	7.1%
BNP Paribas Noms P/I	24,457,816	5.4%
JP Morgan Nominees Australia P/I	24,020,621	5.3%
Warbont Nominees P/L	13,475,335	3.0%
Lateral Minerals P/L <Thompson Family A/C>	13,038,036	2.9%



Why Graphite?

The anode of most commercial Li-ion batteries is made of 95% graphite. It is the largest volume but least known mineral in energy storage.



Why is it **Critical**?

Graphite props up most modern industry

Fundamental to industry

Thousands of uses that underlie modern life

Weakest link

Raw graphite is abundant *but* coated battery graphite (anode) is controlled by one country

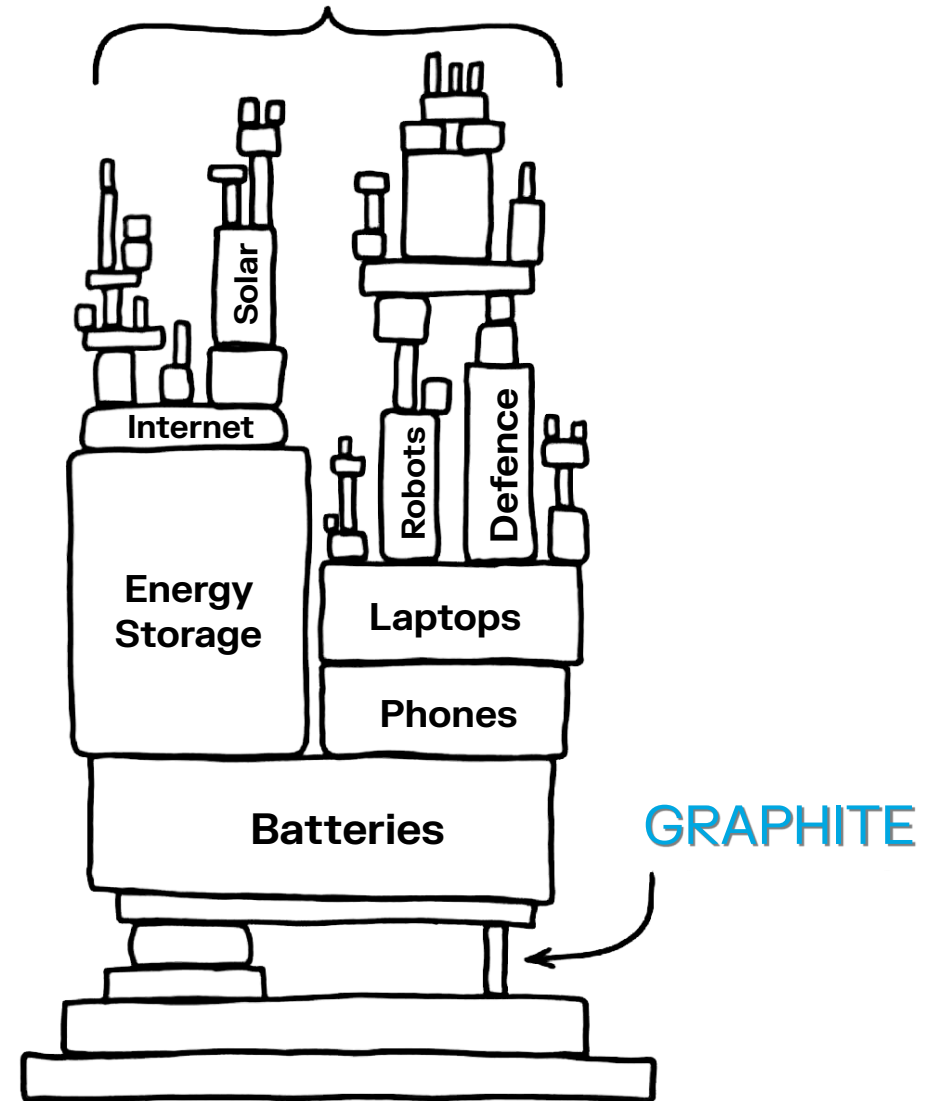
Globally recognised as Critical Mineral

Natural graphite and anode classified as Strategic and Critical in U.S. and EU

Unsolved new supply

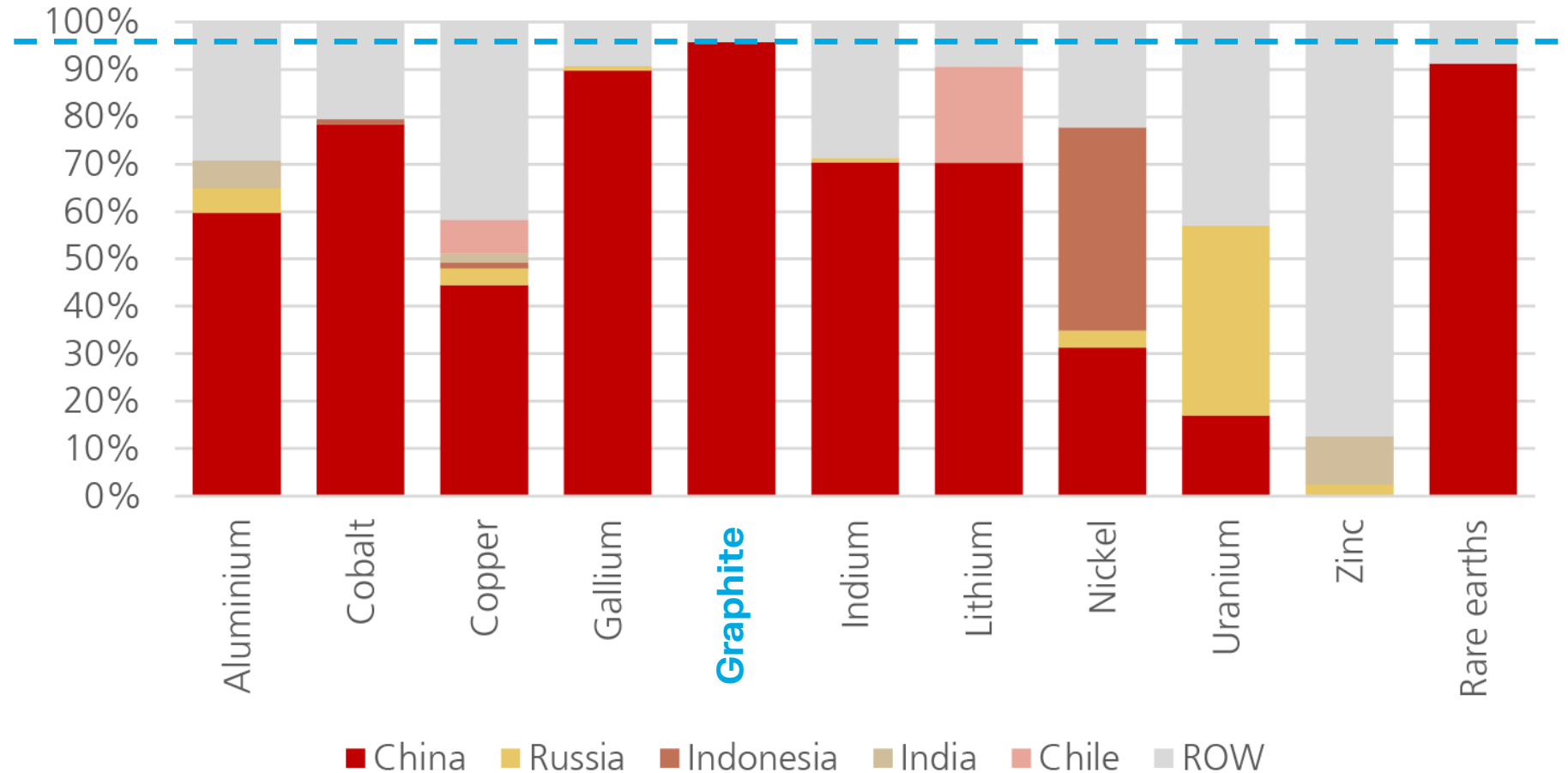
On numerous industry measures criticality rising, as supply chain weakness becoming realised

MODERN SOCIETY



“Supply chain worse than REE’s”

Raw material abounds but downstream production to anode is nearly 100% China-based



Geographic Concentration Across a Selection of Critical Materials

UBS Global Research 7 Nov 2025

Geopolitical drivers

Battery graphite materials derive almost exclusively in **China**



99.95%
Graphite



Battery
Anode



New restrictions on export permits includes graphite materials, anode production tech and equipment



US localisation rules enacted (PFE and FEOC) and China graphite subject to 130% counter-vailing duties + trade tariffs.



Battery Passport introduced and local 10% extraction/40% processing targets but remains heavily dependent on imports.

Anode production project in Sweden

We are using our 100% owned resources and technologies to produce 19,500tpa graphite products in Stage 1 and over 100,000tpa in Stage 2



19,500tpa anode



Clean, low cost energy



**Refinery fully permitted
and construction ready**

Talga Upstream



Talga's Vittangi Graphite Project during trial mining

Secure Location

Sweden (NATO member)



Premium Grade

World-leading resource with reserve grade 24.1% graphite¹ uniquely suitable for fast-charge batteries

Stockpiles at Ready

27,000 tonnes mined ore available now



1. For JORC details see Appendix Table and ASX:TLG 1 July 2021

Talga Downstream

Anode process and product technology



100% owned Intellectual Property
from Talga R&D team in Cambridge
UK, Germany, Australia and Sweden



15 active patent families,
65 active cases



Three U.S patents recently granted
on key products and technologies

*Talga's demo-scale anode production plant (right)
operating since 2022 in Luleå Sweden.*



Talnode® products

High-performance graphite anode for premium battery applications



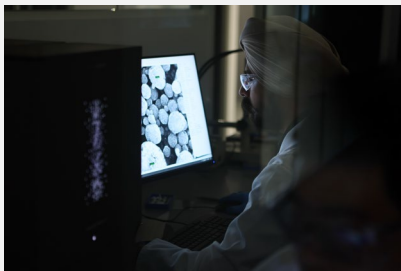
Talnode®-C

- Super fast-charge and low temp. performance
- Patented low emission anode made from our Swedish graphite using our proprietary coating process



Talnode®-R

- Recycled graphite anode, made from graphite waste retrieved from spent batteries and scrap
- Enables circularity and expansion globally



Talnode®-Si

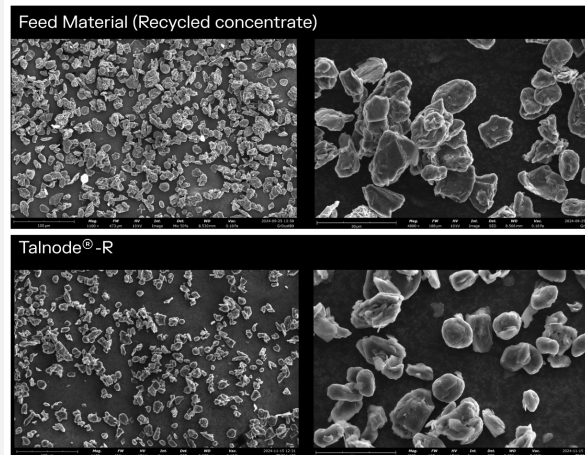
- Silicon-graphene composite for energy-boosting additive to graphite battery anodes.
- Low cost, highly scalable manufacturing process

Talnode®-R anode from battery waste graphite

- Graphite anode produced from lithium-ion battery production scrap and end-of-life batteries
- Uses flowsheet based on Talnode®-C plant with minor modifications, and can be added in modules to Swedish refinery or be deployed globally
- Recycled graphite supply agreements with Altilium and Aurubis



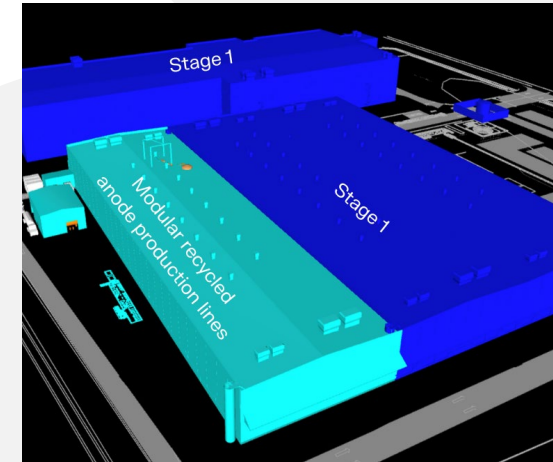
Black-mass recycled graphite concentrate



SEM images of recycled concentrate purified, shaped and coated into Talnode®-R



Part of Talnode®-R Pilot Plant



Schematic of Vittangi Anode Project Stage 1 refinery with added recycled anode modules

USA development

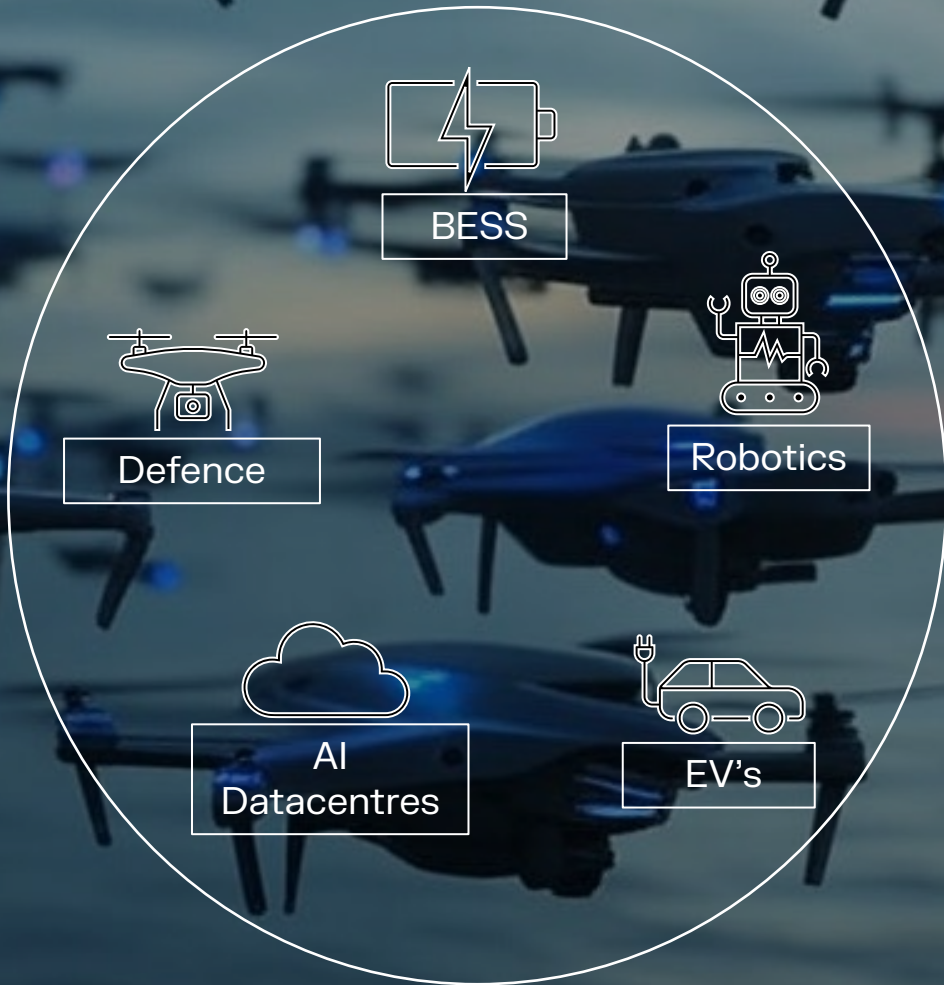
Expansion opportunity

- Talga technology and operations align with U.S strategic goals and reshoring plans
- Initial partnership with United Catalyst Corporation, a South Carolina company with 30+ years of processing and mineral recovery (PGM's, auto catalysts) expertise
- Includes recycling solutions, industrial development processes/permits, existing network of material suppliers and transport logistics
- UCC President Becky Berube is a cleared advisor for the US Department of Commerce's Industry Trade Advisory Committee on Critical Minerals (ITAC-5).



Talga MD Mark Thompson with UCC President Becky Berube & UCC CTO Cole Berube at White House Oct 2025

Macro and Catalysts



China tightens export controls

- › China's Ministry of Commerce applies new export controls on graphite anode materials and equipment/technology for Nov 7, 2026

Global Impact

- › World just woke up that China directly/indirectly controls 99% of world's battery-ready graphite
- › Most Western firms rely on Chinese tech/equipment (except Talga) that is under threat of control
- › Potential disruption to global electrification
"No graphite, no battery"

Outlook

- › Stronger interest in supply chain from Government and institutions
- › Talga wholly owned supply and process tech offers premium value
- › Catalysts include significant new customer partnerships, funding and strategic investments (Government and Industry) and expansions in EU and U.S.

www.talgagroup.com



ASX:TLG



JORC Graphite Reserve and Resources

Ore Reserve ^{3, 5}	Tonnes	Graphite (% Cg)
Nunasvaara (JORC 2012)	2,260,140	24.1
Probable	2,260,140	24.1

Mineral Resources ^{1, 2, 4, 6, 7, 8}	Tonnes	Graphite (% Cg)
Vittangi (JORC 2012)	35,020,000	23.8
Indicated	26,691,000	24.3
Inferred	8,329,000	22.1
Jalkunen (JORC 2012)	31,500,000	14.9
Inferred	31,500,000	14.9
Raitajärvi (JORC 2004)	4,300,000	7.1
Indicated	3,400,000	7.3
Inferred	900,000	6.4
Total Mineral Resources	70,820,000	18.8

Note:

1. Mineral resources are inclusive of ore reserves.
2. Mineral Resources are reported at various cut off grades: Vittangi 12.5% Cg, Jalkunen 5% Cg and Raitajärvi 5% Cg.
3. Ore Reserve is reported at a cut off grade of 12% Cg.
4. Errors may exist due to rounding.

JORC Exploration Target

2021 Exploration Target Vittangi Graphite Project		
Vittangi (JORC 2012)	Low	High
Tonnage Range	170Mt	200Mt
Grade Range	20% Cg	30% Cg

Note that the potential quantity and grade of the Exploration Target is conceptual in nature, there has been insufficient exploration to estimate a Mineral Resource and it is uncertain if further exploration will result in the estimation of a Mineral Resource.

Talga completed new ground electromagnetic geophysical ("EM") surveys of graphite targets at Vittangi following the 2020 upgrade of the Vittangi graphite resource. The EM survey results have been reviewed in combination with prior Talga geochemical samples collected from the surface within the conductors, which averaged 26.2% graphite ("Cg") (ASX:TLG 15 Nov 2012). Modelling of this data in conjunction with positive outcomes of the Niska underground mining scoping study have enabled a revised JORC-compliant Exploration Target estimate totalling 170-200Mt at 20-30% Cg at Vittangi (ASX:TLG 20 Jul 2021). This is a significant increase from the previous 26-46Mt at 20-30% Cg (ASX:TLG 17 Sep 2020). The majority of this estimate is proximal along strike and down dip from Talga's existing Vittangi JORC (2012) graphite resources of 35.0Mt @ 23.8% Cg. Additional targets are located along the mapped graphite units around the greater Nunasvaara Dome area.

New rounds of diamond core drilling commenced at Vittangi in mid-2021. The staged 69 hole diamond drilling program totalling ~8,000m tested parts of the JORC Exploration Target as down-dip extensions of the current JORC Resources as well as shallow subcrop targets between Nunasvaara North and Niska South. Reviews of JORC Exploration Targets will be undertaken where significant changes are indicated by continued exploration.

See Talga's ASX announcement dated 20 July 2021 for further information.

Competent Person Statements

The Vittangi Mineral Resource estimate was first reported in the Company's announcement dated 6 October 2023 titled 'Talga boosts Swedish battery graphite'. The Company confirms that it is not aware of any new information or data that materially affects the information included in the previous market announcement and that all material assumptions and technical parameters underpinning the Resource estimate in the previous market announcement continue to apply and have not materially changed.

The Nunasvaara Ore Reserve statement was first reported in the Company's announcement dated 1 July 2021 titled 'Robust Vittangi Anode Project DFS'. The Company confirms that it is not aware of any new information or data that materially affects the information included in the previous market announcement and that all material assumptions and technical parameters underpinning the Reserve estimate in the previous market announcement continue to apply and have not materially changed.

The Jalkunen Mineral Resource estimate was first reported in the Company's announcement dated 27 August 2015 titled 'Talga Trebles Total Graphite Resource to Global Scale'. The Company confirms that it is not aware of any new information or data that materially affects the information included in the previous market announcement and that all material assumptions and technical parameters underpinning the Resource estimate in the previous market announcement continue to apply and have not materially changed.

The Raitajärvi Mineral Resource estimate was first reported in the Company's announcement dated 26 August 2013 titled '500% Increase to 307,300 Tonnes Contained Graphite in New Resource Upgrade for Talga's Swedish Project'. The Company confirms that it is not aware of any new information or data that materially affects the information included in the previous market announcement and that all material assumptions and technical parameters underpinning the Resource estimate in the previous market announcement continue to apply and have not materially changed.

The Company first reported the production target and forecast financial information referred to in this presentation in accordance with Listing Rules 5.16 and 5.17 in its announcement titled 'Robust Vittangi Anode Project DFS' dated 1 July 2021. The Company confirms that other than the capex updated in the FEED Study first reported in the Company's announcement titled 'Completion of Vittangi Anode Project FEED Study delivers strong results' dated 15 April 2024 all material assumptions underpinning that production target and forecast financial information derived from that production target continue to apply and have not materially changed.

The Company first reported the production target and forecast financial information referred to in this presentation in accordance with Listing Rules 5.16 and 5.17 in its announcement titled 'Positive Niska Scoping Study Outlines Pathway to Globally Significant Battery Anode Production' dated 7 December 2020. The Company confirms that all material assumptions underpinning that production target and forecast financial information derived from that production target continue to apply and have not materially changed.

The Company first reported the production target referred to in this presentation in accordance with Listing Rule 5.16 in its announcement titled 'Vittangi Anode Project Expansion: Interim Scoping Study' dated 11 June 2024. The Company confirms that all material assumptions underpinning that production target continue to apply and have not materially changed.

The Information in this presentation that relates to prior exploration results for the Vittangi Graphite Project is extracted from ASX announcements that are referred to in the relevant slides of the presentation and that are available to view on the Company's website at www.talgagroup.com. The Company confirms that it is not aware of any new information or data that materially affects the exploration results included in the relevant original market announcements. The Company confirms that the form and context in which the Competent Person and Qualified Person's findings are presented have not been materially modified from the relevant original market announcements.

The information in this presentation that relates to the Vittangi exploration target is based on information compiled by Albert Thamm. Mr Thamm is a consultant to the Company and a Competent Person who is a Member of the Australian Institute of Mining and Metallurgy (Membership No.203217). Mr Thamm has sufficient experience, which is relevant to the style of mineralisation and types of deposits under consideration and to the activity which has been undertaken to qualify as a Competent Person as defined in the 2012 edition of the Australasian Code for Reporting of Exploration Results, Mineral Resources and Ore Reserves (JORC Code). Mr Thamm consents to the inclusion in the presentation of the matters based on his information in the form and context in which it appears.

The Information in this presentation that relates to prior exploration results for the Aero Project is extracted from ASX announcements that are referred to in the relevant slides of the presentation and that are available to view on the Company's website at www.talgagroup.com. The Company confirms that it is not aware of any new information or data that materially affects the exploration results included in the relevant original market announcements. The Company confirms that the form and context in which the Competent Person and Qualified Person's findings are presented have not been materially modified from the relevant original market announcements.